



The European Union Emergency Trust Fund for Africa (EUTF)

Sahel and Lake Chad



**Improved migration management
in countries of origin, transit
and destination**

**Strategic Objective 3 (SO3)
output indicators as of December 2022**



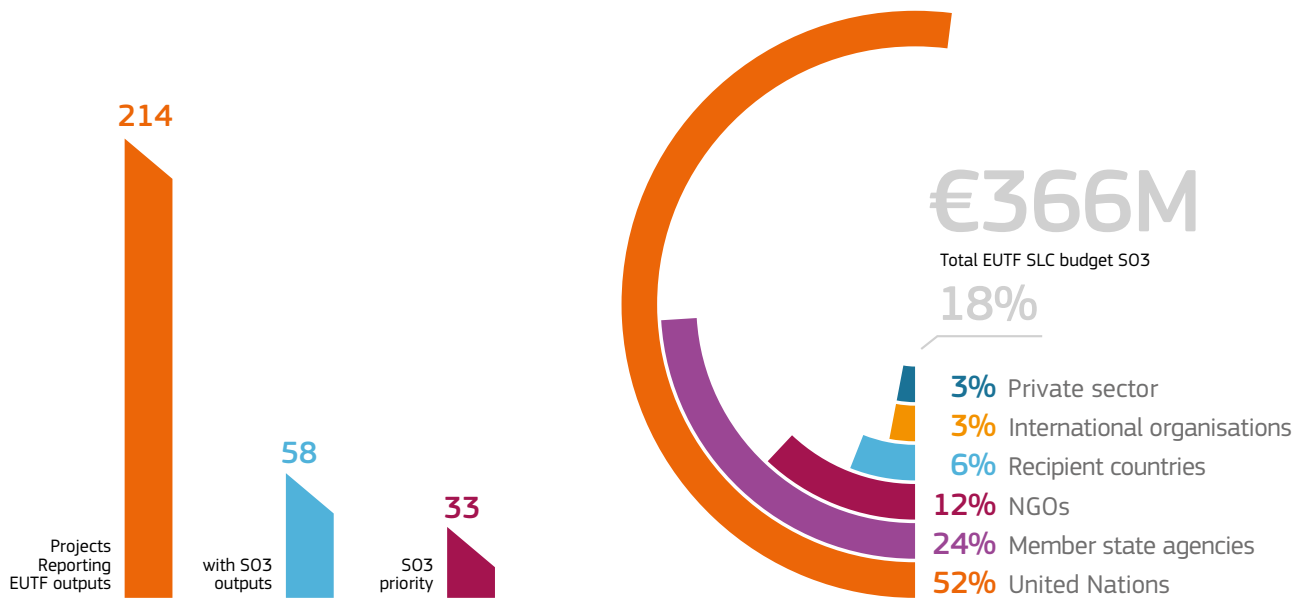


S03: Improved migration management in countries of origin, transit and destination

Key EUTF S03 output indicators as of December 2022

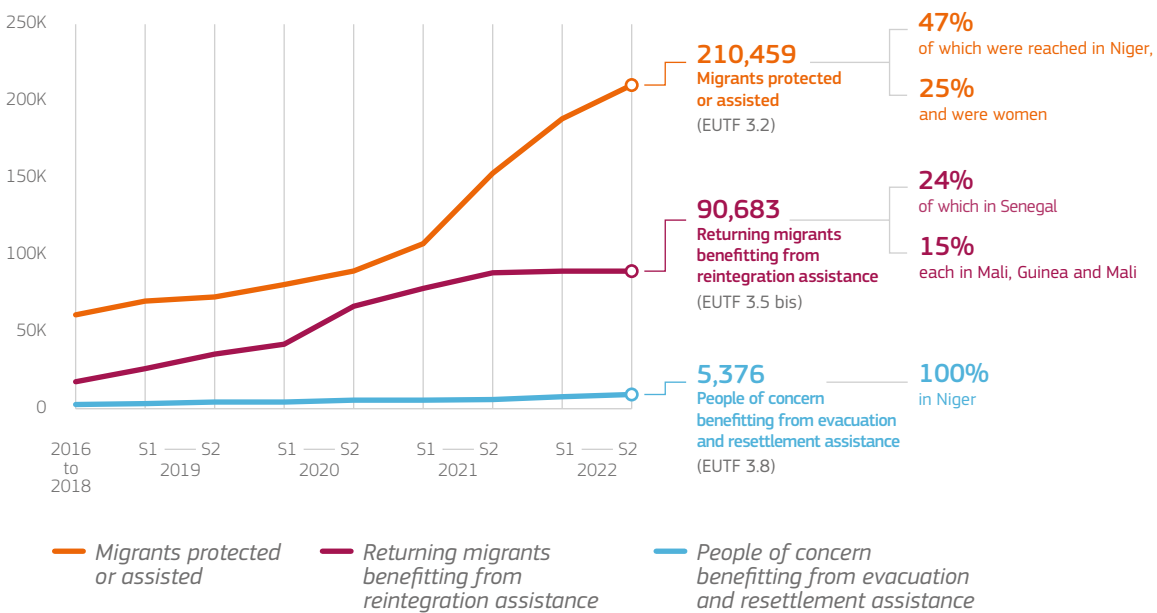


EUTF S03 portfolio in SLC



Key S03 trends

Cumulative EUTF S03 outputs

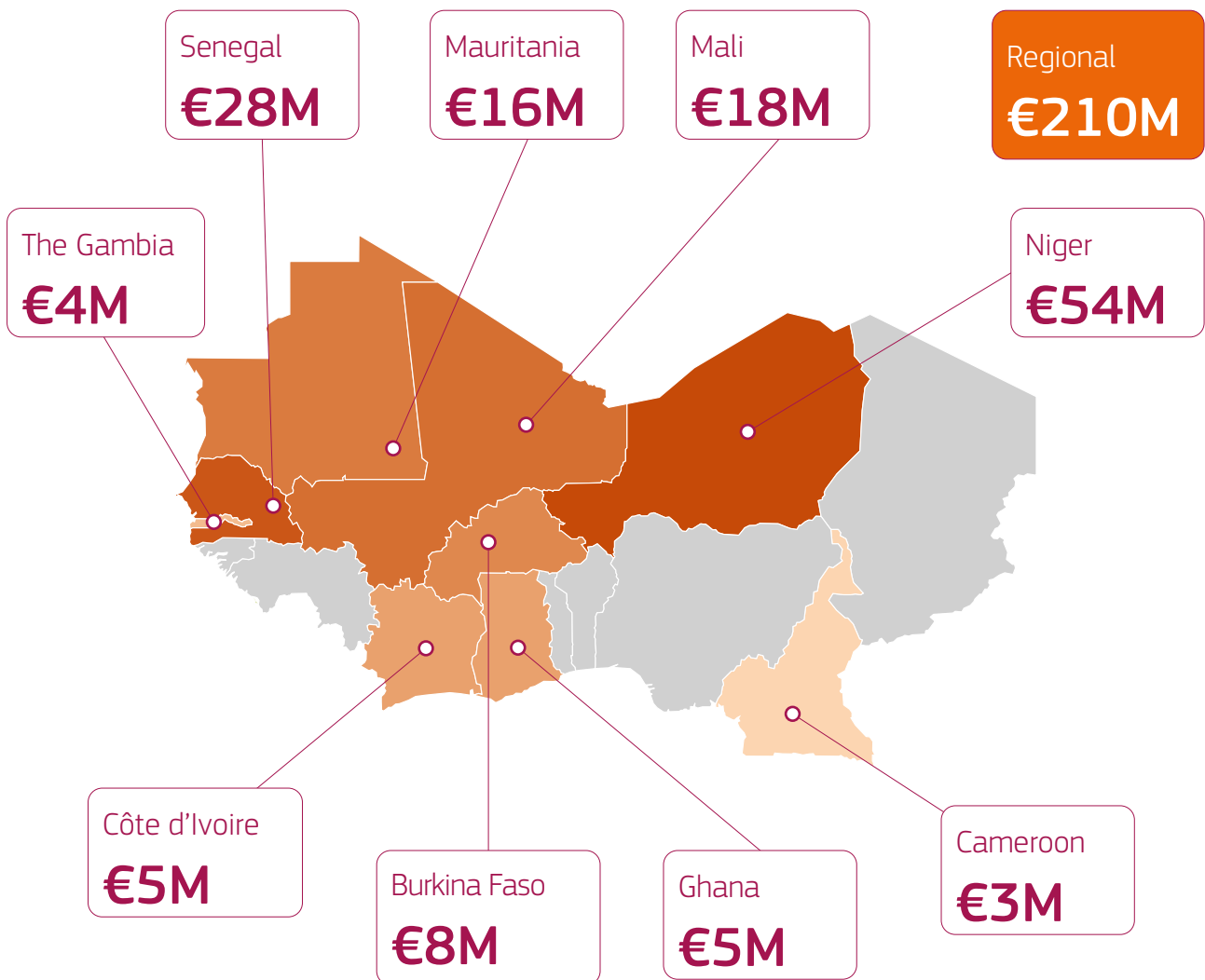




S03: Improved migration management in countries of origin, transit and destination

S03 funding by country

Sahel & Lake Chad States

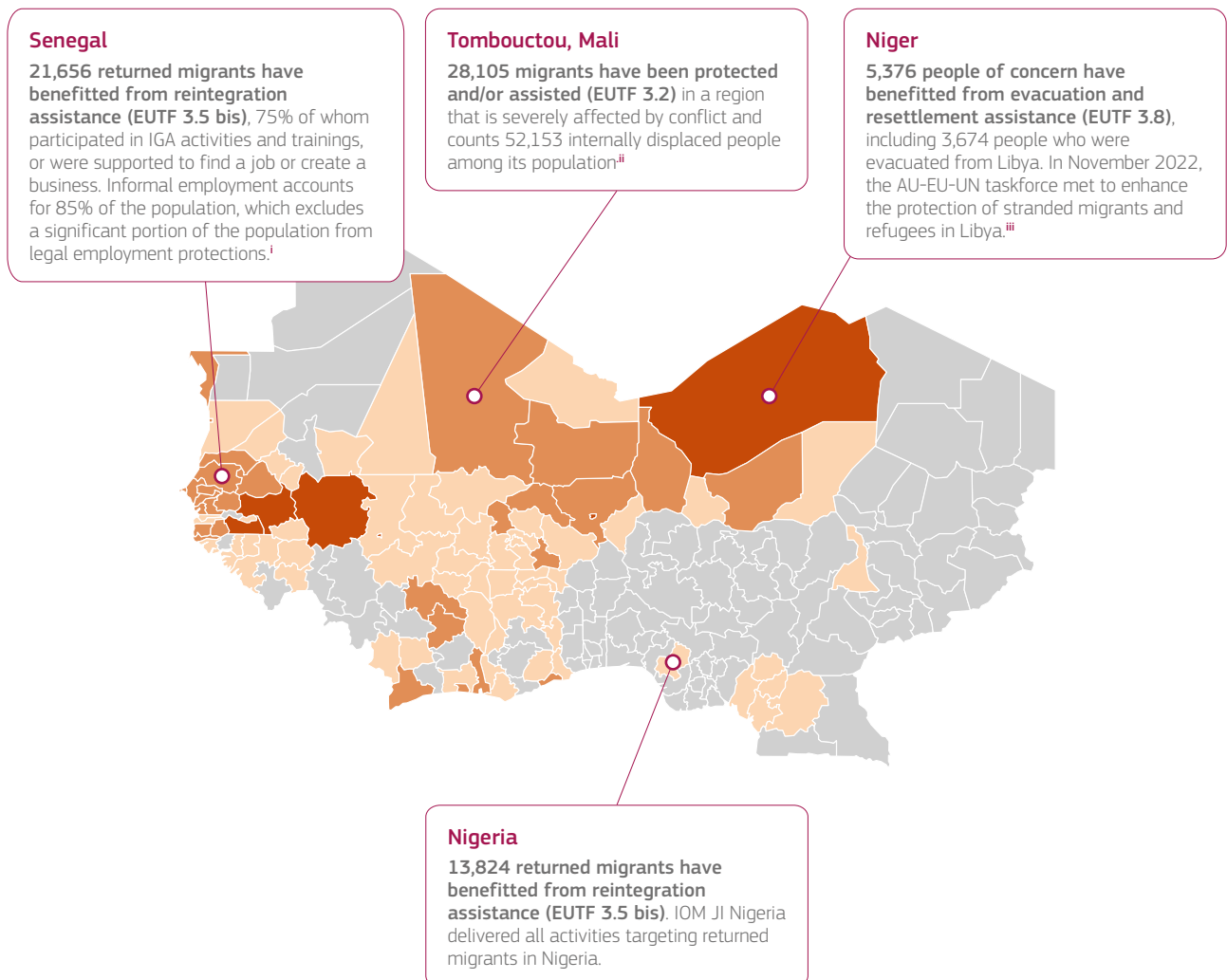




SO3: Improved migration management in countries of origin, transit and destination

Implementation areas and key SO3 outputs as of December 2022

Sahel & Lake Chad States



Number of SO3 priority projects per region¹

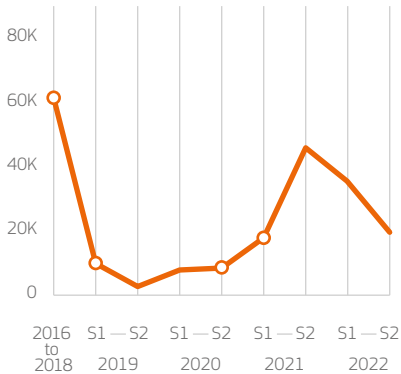




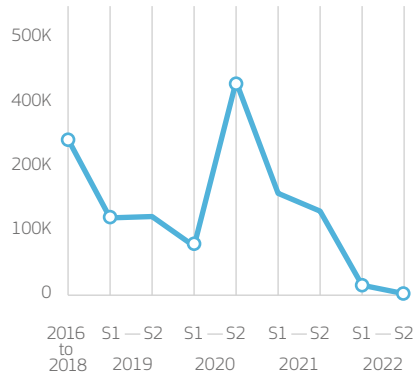
S03: Improved migration management in countries of origin, transit and destination

Key S03 outputs

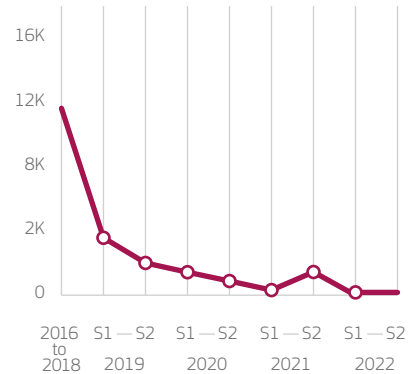
Non-cumulative EUTF S03 outputs



Migrants protected or assisted (EUTF 3.2)



People benefitting from evacuation and resettlement assistance (EUTF 3.8)



Returning migrants benefitting from reintegration assistance (EUTF 3.5 bis)

<p>Significant early outputs, with 61,089 migrants protected in the 2016-2018 period</p> <p>Almost half of the 21 projects reporting against this indicator began delivering outputs in the 2016-2018 period. EU-IOM JI Niger was the main contributor to this early output and provided 52,950 migrants with protection services (87% of results for the period), followed by EU-IOM JI Mali (10%).</p> <p>Slow outputs from S1 2019 to S2 2020, with 29,012 migrants supported or protected in the two-year period</p> <p>While the number of projects reporting outputs slowly increased during this period, the drop in results is mainly attributable to a significant decrease in the EU-IOM JI's biannual output in Niger (6,170 migrants assisted in 2019) compared to its first year of implementation (2017). Other projects such as EU-IOM JI Mali, Protection West Africa (regional), and Refugees' Resilience (regional) also reported relevant outputs.</p> <p>Peak in S2 2021 onwards, with 46,230 migrants protected or supported in S2 2021</p> <p>The Protection West Africa programme started implementation in 2020 and reported the largest biannual programme output for each semester from S1 2021 onwards, including 39,916 migrants in S2 2021 (84% of the semester result). Of 210,459 migrants protected from 2016 to December 2022, the programme delivered more than half of the total result (52%).</p>	<p>Steady outputs in the 2016-2018 period, with 17,971 returning migrants receiving reintegration assistance</p> <p>EU-IOM JI projects were responsible for virtually all results under this early output across the region and most notably in Nigeria, The Gambia, Burkina Faso and Cameroon. Returning migrants received various types of assistance, including economic support (IGA, trainings, and skills).</p> <p>Steady outputs from S1 2019 to S1 2020 followed by a peak in S2 2020, with 25,177 returned migrants receiving reintegration assistance</p> <p>EU-IOM JI continued to account for the majority of the biannual results, while other projects such as DES (Senegal), DIZA (Chad), EU-IOM JI Mali, Migration SN (Senegal), PACERSEN (Senegal) and YEP (The Gambia) also supported the reintegration of returning migrants.</p> <p>Phase out of activities in 2022, with 1,582 returning migrants receiving reintegration assistance</p> <p>Activities decreased throughout 2022 as EU-IOM JI had no new results in most countries where it operates. Since 2016, the EU-IOM JI programme provided reintegration assistance to 24% of all returning migrants, Migration Senegal to 23% and EU-IOM JI Nigeria and EU-IOM JI Mali to 15% each.</p>	<p>Significant early outputs, with 2,915 people evacuated or supported to resettle in 2018</p> <p>The Protection CMR 1 programme (ETM Niamey project) in Niger, which started in December 2017, is the only EUTF programme to have contributed to EUTF indicator 3.8. CMR 1 offered evacuations, resettlements and other durable solutions to refugees in Libya. More than half of the programme's evacuees (54%) were supported in its first full year of implementation (2018).</p> <p>2,443 people were evacuated from Libya or supported to resettle across 2019, 2020, 2021</p> <p>CMR 1 (Niger) frontloaded the evacuation of refugees from Libya, and then kept a steady pace of processing resettlement files to third countries.</p> <p>Activities closed in 2022, with 18 people evaluated or supported to resettle</p> <p>The last evacuations from Libya took place in S2 2021, and in 2022, the programme focused on processing resettlement files.</p>



SO3: Improved migration management in countries of origin, transit and destination

Abbreviations and acronyms

AU-EU-UN Taskforce	Joint taskforce of the African Union, the European Union and the United Nations
DES	Développer l'emploi au Sénégal: Renforcement de la compétitivité des entreprises et de l'employabilité dans les zones de départ
DIZA	Programme de développement inclusif dans les zones d'accueil
ETM Niamey	Enhancing Protection, Live-Saving Assistance And Solutions, Including Resettlement For Persons Of Concern With International Protection Needs In Libya And West Africa (Niger And Burkina Faso)
IOM	International Organization for Migration
JI	Joint Initiative
Other NFI	Other non-food items
PACERSEN	Projet d'Appui à la réduction de la migration à travers la Création d'Emplois Ruraux au Sénégal, par la mise en place de fermes agricoles villageoises et individuelles
Protection CMR	Protection and sustainable solutions for migrants and refugees along the Central Mediterranean route
SO3	Improved migration management in countries of origin, transit and destination
YEP	Youth Empowerment Project

Footnotes

1. The colours on the map represent the number of SO3 priority projects in each region. However, the key outputs selected highlight notable results achieved by EUTF projects, and do not always correlate with the number of projects present in a given area.

Sources

- i. ILO, 'Diagnostic de l'Économie Informelle au Sénégal', 2020. Retrieved [here](#).
- ii. IOM, 'Matrice de Suivi des déplacements (DTM)', December 2022. Retrieved [here](#).
- iii. Delegation of the EU to the AU, 'AU-EU-UN taskforce meets to revitalize the tripartite cooperation to enhance the protection of stranded migrants and refugees in Libya', November 2022. Retrieved [here](#).



European Commission

The EU Emergency Trust Fund for Africa

Address: Rue de la Loi 41, B-1049 Brussels

Phone: +32 (0) 2 299 11 11

E-mail: intpa-eutf-africa@ec.europa.eu

Website: <https://trust-fund-for-africa.europa.eu/>



**Funded by
the European Union**

Funding and non-responsibility disclaimer:

This material was produced with the financial support of the European Union through the European Emergency Trust Fund for Africa. Its contents are the sole responsibility of Altai Consulting and do not necessarily reflect the views of the European Union.

Copyright notice:

© European Union, 2023

Graphic design: Pomilio Blumm srl

Cover photo: © GIZ/Raed Saleh

Licensed to the European Union under conditions