



# The European Union Emergency Trust Fund for Africa (EUTF)

Sahel and Lake Chad



## Greater economic and employment opportunities

Strategic Objective 1 (SO1)  
output indicators as of December 2023





## S01: Greater economic and employment opportunities

Key EUTF S01 output indicators as of December 2023



**158,651**  
Jobs created  
(EUTF 1.1)

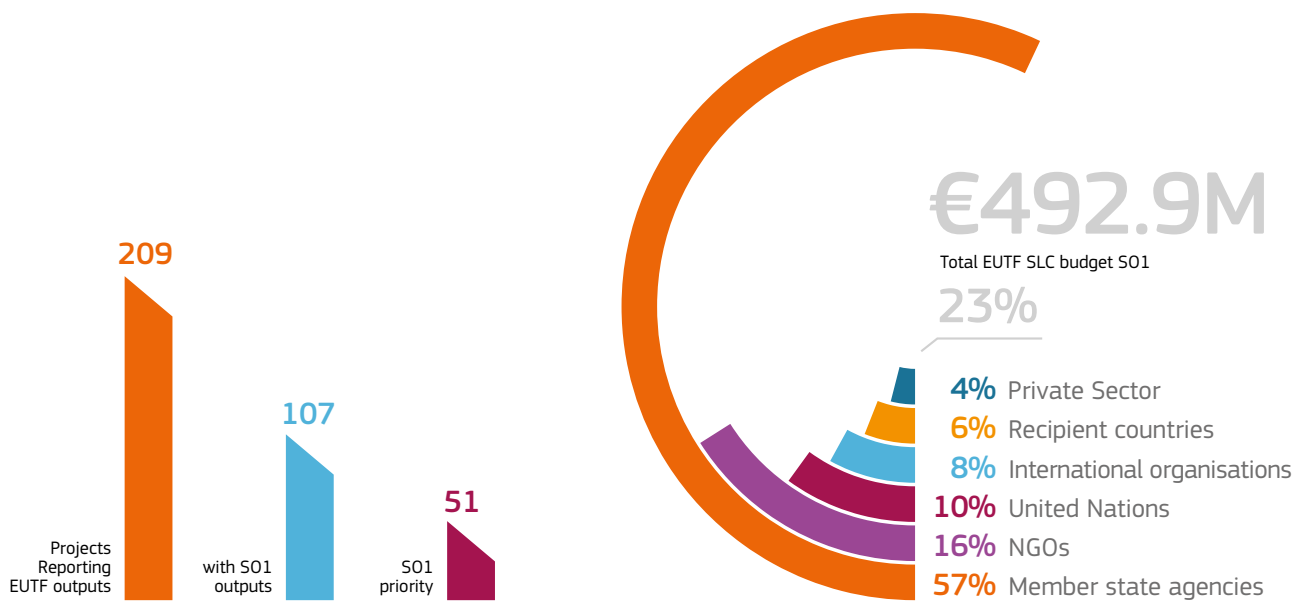


**757,903**  
IGA beneficiaries  
(EUTF 1.3)



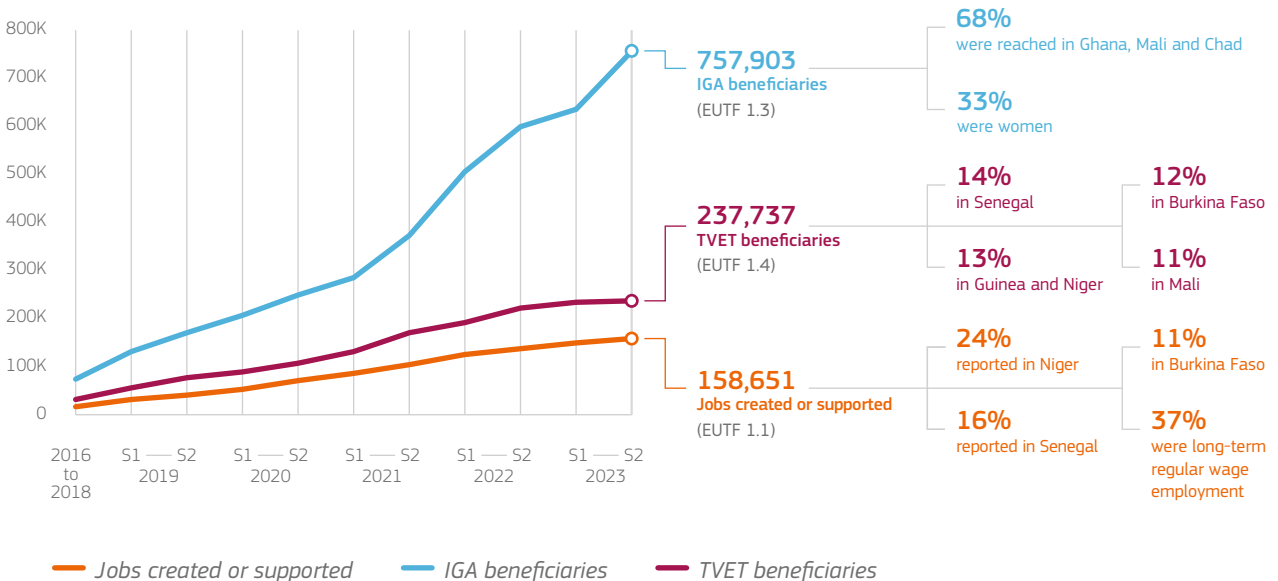
**237,737**  
TVET beneficiaries  
(EUTF 1.4)<sup>1</sup>

EUTF S01 portfolio in SLC



## Key S01 trends

Cumulative EUTF S01 outputs

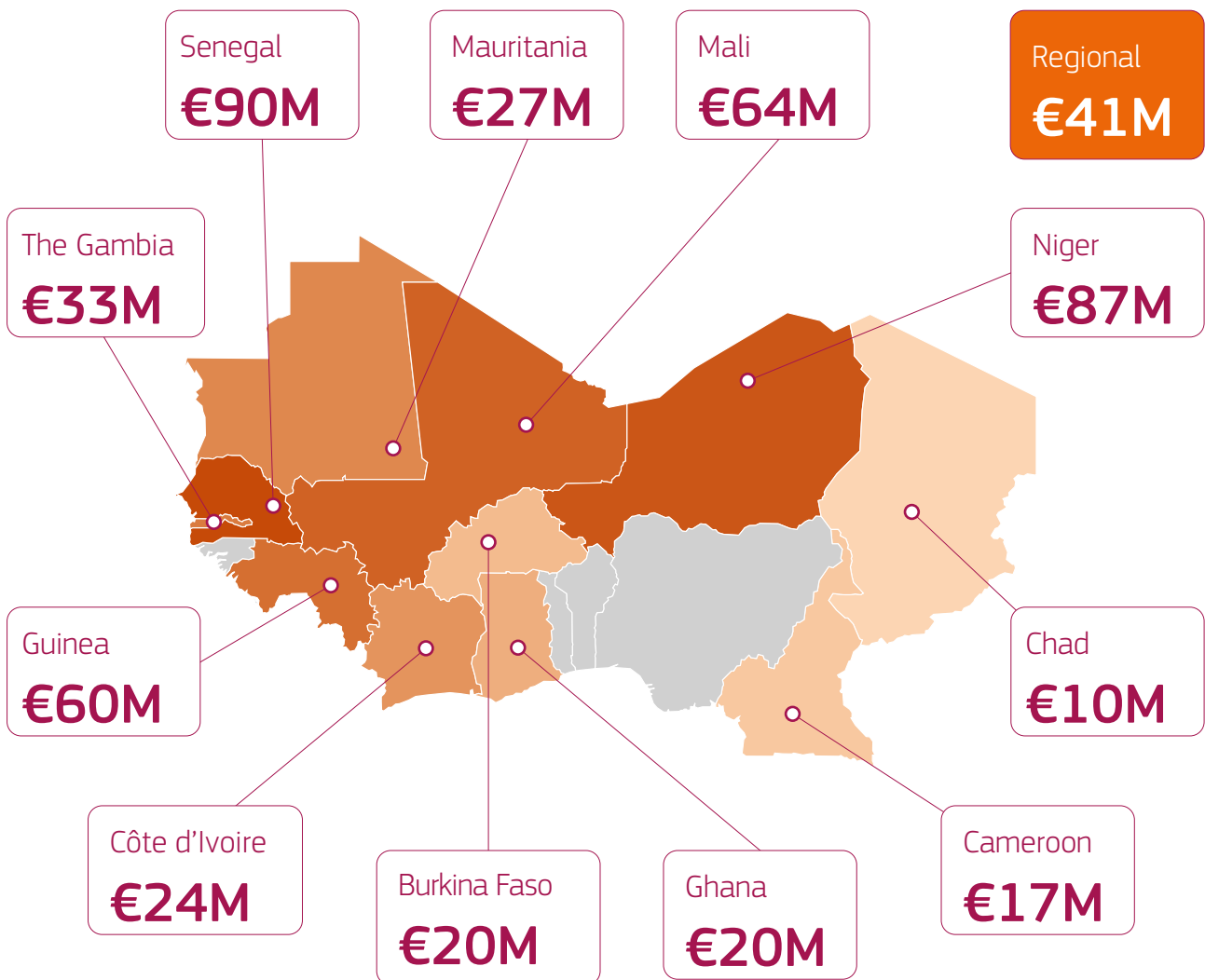




## S01: Greater economic and employment opportunities

### S01 funding by country

Sahel & Lake Chad

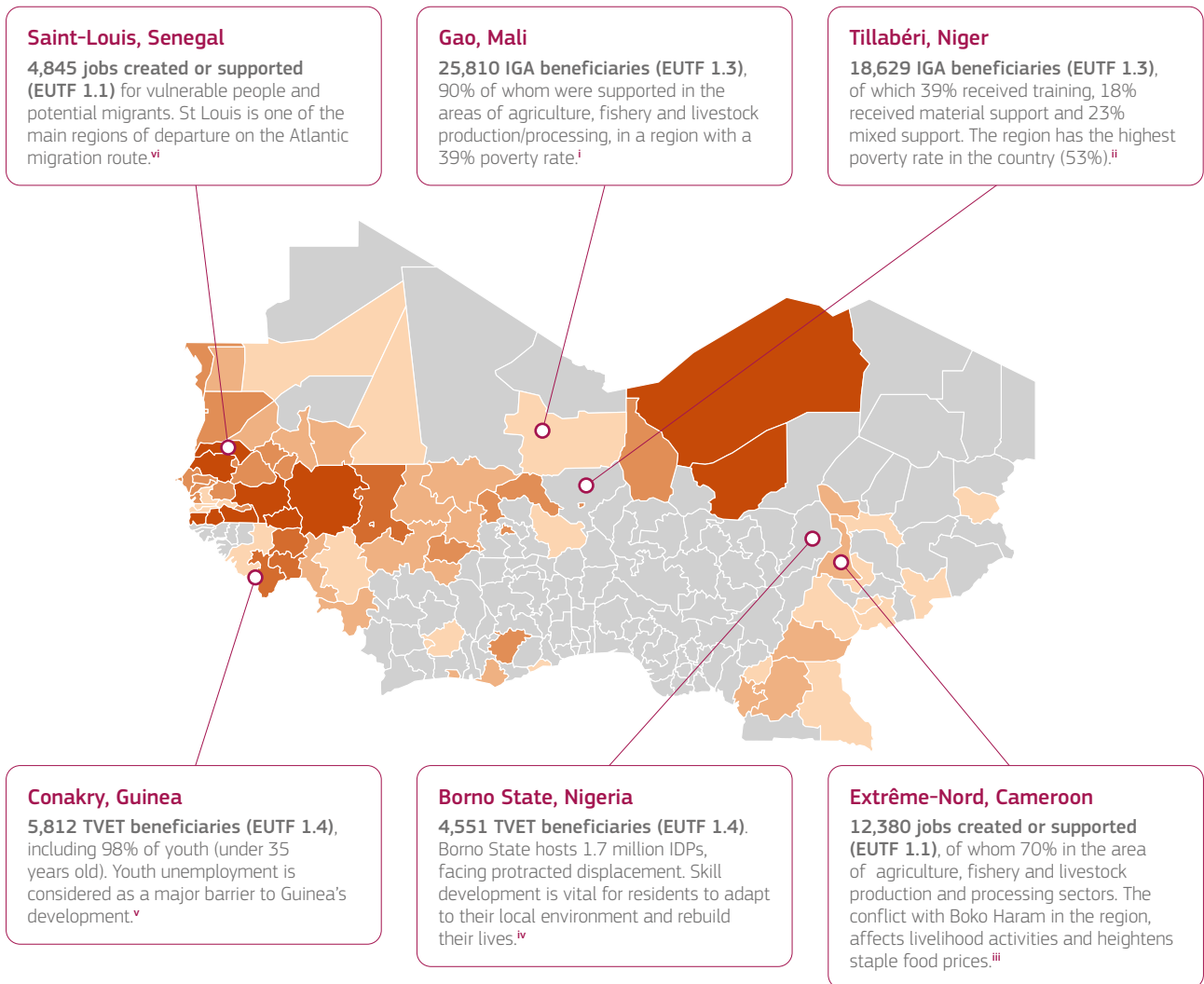




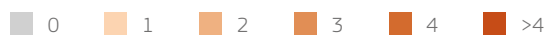
# S01: Greater economic and employment opportunities

## Implementation areas and key S01 outputs as of December 2023

Sahel & Lake Chad



Number of S01 priority projects per region<sup>2</sup>

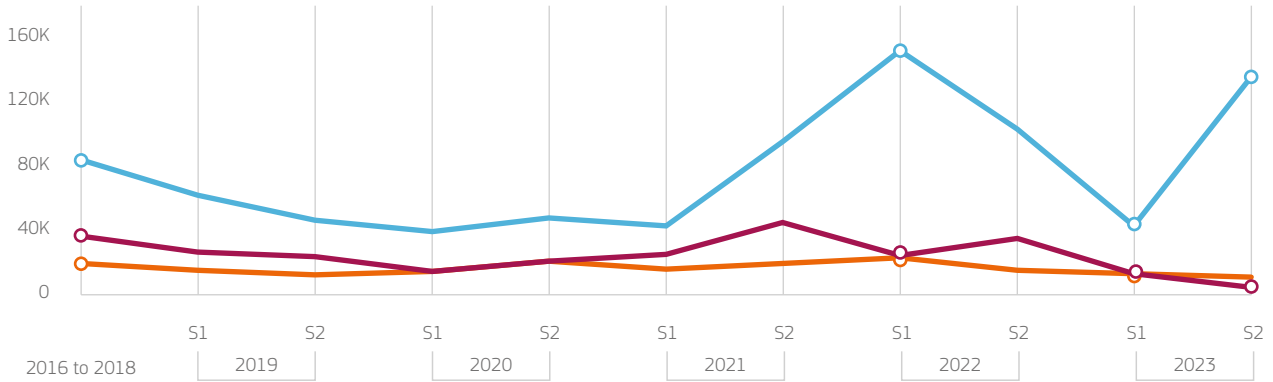




## SO1: Greater economic and employment opportunities

### Key SO1 outputs

Non-cumulative EUTF SO1 outputs



Jobs created or supported 1.1



IGA beneficiaries 1.3



TVET beneficiaries 1.4



#### Steady outputs in the 2016–2018 period, with 17,333 jobs created or supported

21 programmes contributed to job creation across SLC during this period. LRRD<sup>4</sup> in Nigeria, which contributed to 21% of this result, came to an end in 2018.

#### Peak in S1 2022 with 20,399 jobs created or supported

Niger recorded the highest number of jobs supported or created in S1 2022, totalling 7,160 jobs (35% of total), through *Emploi Niger*<sup>5</sup> which supported or created 4,821 jobs and *Pôles Ruraux* an additional 2,455 jobs.

#### Decrease in 2023, with 20,926 jobs created or supported

As projects in Niger approached their end, jobs created or supported in Niger dropped from 4,642 in S2 2022 to 3,294 in S1 2023. In the S2, output shifted towards Ghana with the *GrEEn GH*<sup>6</sup> programme, supporting or creating 8,135 jobs.



#### Steady early outputs in the 2016–2018 period, with 74,906 people assisted to develop IGAs through 25 programmes

*KEY*<sup>7</sup> in Mali provided agricultural starter kits and *ISING*<sup>8</sup> in Nigeria assisted beneficiaries (of whom 71% are female youths) in accessing finance through Village Savings and Loan Associations. These two projects supported more than 10,000 people each.

#### Highest outputs in S1 2022, with 135,394 people assisted to develop IGAs

This was driven by the *GrEEn GH* programme in Ghana, which supported 105,518 individuals, facilitating access to finance. *PDU* and *Emploi Niger* also made substantial contributions (7,315 and 5,871 beneficiaries respectively). Output remained high in the S2 with 91,897 individuals supported.

#### Sharp decrease in S1 2023 (37,806 beneficiaries) but strong output in S2 (120,838)

In S1 2023 the *PDU*<sup>9</sup> programme represented 43% of the semester's outputs, with Niger concentrating 69% of its activities. In S2 2023 the *GrEEn GH* programme in Ghana supported 110,000 beneficiaries representing 91% of the semester's outputs of this indicator.



#### Significant results in the 2016–2018 period, with 32,254 people benefitting from TVET

*Développer l'emploi au Sénégal*<sup>10</sup> and *PARSE*<sup>11</sup> in Cameroon were the first contributors, accounting for 44% of the outputs over the period. The latter relied on the dual training approach, where trainees alternate between training center and companies for practical work experience.

#### Downward trend from 2019 (44,718) to 2020 (31,062) and peak in 2021 (61,716).

Outputs slowed down in 2020. However, the *Développer l'emploi au Sénégal* programme resumed a high pace of activities in S1 2022, alongside the *GrEEn* programme in Ghana and *Archipelago* in 9 countries<sup>3</sup> of the region. The three programmes accounted for 55% of the 1.4 output for 2022.

#### Slowing down of activities in 2023 (15,397)

The *INTEGRA*<sup>12</sup> in Guinea programme was the first contributor to the output of this indicator (25%). *ARCHIPELAGO*<sup>13</sup> pursued its activities in its 9 countries of operation and contributed to 19% of the outputs for this year. Half of its activities focused on dual training. *GrEEn GH* also represented 19% of the outputs on this period.



## SO1: Greater economic and employment opportunities

### Footnotes

1. Throughout this section, the term 'TVET' also includes other forms of skills development.
2. The colours on the map represent the number of SO1 priority projects in each region. However, the key outputs selected highlight notable results achieved by EUTF projects, and do not always correlate with the number of projects present in a given area.
3. Burkina Faso, Cameroon, Chad, Côte d'Ivoire, Ghana, Mali, Mauritania, Niger, Senegal.
4. Linking Relief, Rehabilitation and Development and promoting the stability and safety of communities in displacement in North East Nigeria (LRRD Nigeria)
5. *Création d'emplois et d'opportunités économiques à travers une gestion durable de l'environnement dans les zones de transit et départ au Niger* (Emploi Niger)
6. Boosting green employment and enterprise opportunities in Ghana (GrEEn GH)
7. *Programme de renforcement de la résilience des communautés, des ménages et des individus vulnérables à l'insécurité alimentaire et nutritionnelle au Mali* (KEY)
8. Investing in the Safety and Integrity of Nigerian Girls (ISING)
9. *Programme d'urgence pour la stabilisation des espaces frontaliers du GS Sahel* (PDU)
10. Développer l'emploi au Sénégal: renforcement de la compétitivité des entreprises et de l'employabilité dans les zones de départ
11. *Projet de Promotion de l'Emploi et Renforcement de la Résilience au Nord Cameroun* (Extrême-Nord, Nord et Adamaoua)
12. *Programme d'appui à l'intégration socio-économique des jeunes* (INTEGRA)
13. ARCHPELAGO: an African-European TVET initiative

### Sources

- xiv. INSTAT, 'Consommation pauvreté bien-être des ménages 2022', April 2023. Retrieved [here](#).
- xv. INSDER, 'Enquête harmonisée sur les conditions de vie des ménages 2021/2022', September 2023. Retrieved [here](#).
- xvi. USAID, 'Cameroon Assistance Overview', 31 October 2023. Retrieved [here](#).
- xvii. IOM, 'Nigeria — North-east — Mobility Tracking Round 45 IDP and Returnee Atlas', June 2023. Retrieved [here](#).
- xviii. IFRC, 'Guinea 2023 IFRC network country plan', January 2023. Retrieved [here](#).
- xix. Le Point, 'Migrants du Sénégal : cette si mortelle route des Canaries', 26 septembre 2023. Retrieved [here](#).



**European Commission**

The EU Emergency Trust Fund for Africa

**Address:** Rue de la Loi 41, B-1049 Brussels

**Phone:** +32 (0) 2 299 11 11

**E-mail:** [intpa-eutf-africa@ec.europa.eu](mailto:intpa-eutf-africa@ec.europa.eu)

**Website:** <https://trust-fund-for-africa.europa.eu/>



**Funded by  
the European Union**

**Funding and non-responsibility disclaimer:**

*This material was produced with the financial support of the European Union through the European Emergency Trust Fund for Africa. Its contents are the sole responsibility of Altai Consulting and do not necessarily reflect the views of the European Union.*

**Copyright notice:**

© European Union, 2024

**Graphic design:** Pomilio Blumm srl

**Cover photo:** © Investisseurs & Partenaires (I&P)

Licensed to the European Union under conditions