



EUTF Monitoring and Learning System SLC

YEARLY 2019 REPORT – ANNEXES

COVERING UNTIL 31 DECEMBER 2019

Altai Consulting for the European Union – June 2020



This project is funded by the EU



ANNEXES

1.1. ABBREVIATIONS

Abbreviation	Description
20STM	20 Seconds to Midnight
ACF	<i>Action Contre la Faim</i>
ACLED	Armed Conflict Location and Event Data project
ACTED	Agency for Technical Cooperation and Development
ADA	Austrian Development Agency
ADEL	<i>Appui au Développement Economique Local et à la prévention des conflits dans les régions de Tombouctou et Gao</i>
ADEPME	<i>Agence de Développement et d'Encadrement des Petites et Moyennes Entreprises</i>
AECID	<i>Agencia Española de Cooperación Internacional para el Desarrollo</i>
AFD	<i>Agence française de développement</i>
AFIA	<i>Renforcement des capacités pour une meilleure gestion de la migration afin de protéger l'enfance migrante contre l'exploitation et la traite</i>
A-FIP	<i>Appuyer la formation et l'insertion professionnelle des jeunes filles et garçons des régions d'Agadez et Zinder en vue de contribuer au développement socio-économique de ces deux régions</i>
AGAPAIR	<i>Agadez - Programme à impact rapide</i>
AICS	<i>Agenzia Italiana per la Cooperazione allo Sviluppo</i>
AJUSEN	<i>Appui à la Justice et à la Sécurité au Niger</i>
AMOC-COM	<i>Appui à la maîtrise d'ouvrage communale et à la communication</i>
ANLTP	<i>Agence Nationale de Lutte contre la Traite des Personnes</i>
APESS	<i>Association pour la promotion de l'Elevage au Sahel et en Savane</i>
AQIM	Al-Qaeda in the Islamic Maghreb
ARC	<i>Consortium Alliance pour la Résilience Communautaire</i>
AVRR	Assisted voluntary return and reintegration
BAY	Borno, Adamawa and Yobe states (Nigeria)
CFW	Cash for work
CISP	<i>Comitato internazionale per lo sviluppo dei popoli</i>
CJTF	Nigerian Civilian Joint Task Force
CMR	Central Mediterranean Route
CORIM	<i>Projet d'appui à la prévention de la radicalisation violente en République Islamique de Mauritanie</i>
COVID-19	Coronavirus disease 2019
CPP	Community Peace Partnership
CRF	<i>Croix-Rouge Française</i>
CSO	Civil Society Organisation
CVE	Countering Violent Extremism
DES	<i>Développer l'emploi au Sénégal</i>
DG ECHO	<i>Direction générale pour la protection civile et les opérations d'aide humanitaire européennes de la Commission européenne</i>
DGEAC	Directorate general Education and Culture
DGSE	<i>Direction Générale des Sénégalais de l'Extérieur</i>
DGLPAP	<i>Direction générale des libertés publiques et des affaires politiques, Ministère de l'Administration Territoriale et de la Décentralisation du Burkina Faso</i>
DIZA	<i>Programme de développement inclusif dans les zones d'accueil au Tchad</i>
DRC	Danish Refugee Council
DRR	Disaster Risk Reduction
DTM	Displacement Tracking Matrix
DURAZINDER	<i>Programme de création d'emplois et d'opportunités économiques à travers une gestion durable de l'environnement dans les zones de départ et de transit du Niger</i>
ECI	<i>Equipe conjointe d'investigation</i>
EF	Expertise France
EJOM	<i>L'Emploi des Jeunes crée des Opportunités, ici au Mali</i>
EPPA	<i>Emploi pour le patrimoine d'Agadez</i>

ETM	Evacuation Transit Mechanism
EU	European Union
EUTF	European Union Emergency Trust Fund for stability and addressing root causes of irregular migration and displaced persons in Africa (also EUTF for Africa)
FAO	Food and Agriculture Organization of the United Nations
FARN	<i>Foyer d'Apprentissage et de Réhabilitation Nutritionnelle</i>
FIIAPP	<i>Fundación Internacional y para Iberoamérica de Administración y Políticas Públicas</i>
FMP	Flow Monitoring Point
FSI	Forces de sécurité intérieure
FTE	Full-Time Equivalent
GDP	Gross Domestic Product
GIZ	<i>Deutsche Gesellschaft für Internationale Zusammenarbeit</i>
GRET	Groupe de Recherche et d'Echange Technologique
HACP	<i>Haute Autorité pour la Consolidation de la Paix au Niger</i>
HDI	Human Development Index
HI	<i>Humanité et Inclusion</i>
HIMO	<i>Haute intensité de main d'œuvre</i>
ICRC	International Committee of the Red Cross
IDP	Internally Displaced Person
IFAD	International Fund for Agricultural Development
IGA	Income generating activity
ILO	International Labour Organization
IMF	International Monetary Fund
IMVF	<i>Instituto Marqués de Valle Flôr</i>
INTEGRA	<i>Programme d'appui à l'intégration socio-économique des jeunes</i>
IOM	International Organisation for Migration
IP	Implementing partner
IRC	International Rescue Committee
ISGS	Islamic State in the Greater Sahara
ISIS	Islamic State of Iraq and the Levant
ISWAP	Islamic State – Western African Province
ITC	International Trade Center
JAS	Jamaatu Ahlis-Sunna Liddaawati Wal Jihad
JEEN	<i>Les jeunes entreprennent et s'emploient au Niger</i>
JI	Joint Initiative
JIT	Joint Investigation Team
JNIM	Jamaat Nusrat al-Islam wal Muslimeen
KEY	<i>Programme de renforcement de la résilience des communautés, des ménages et des individus vulnérables à l'insécurité alimentaire et nutritionnelle au Mali</i>
LCB	Lake Chad Basin
LRRD	Linking Relief, Rehabilitation and Development
LVIA	Lay Volunteers International Association
MAECI	Ministry of Foreign Affairs and International Cooperation of Italy
MCN	Enhancing state and community level conflict management capability in North Eastern Nigeria
MENA	<i>Ministère de l'éducation nationale et de l'alphabétisation du Burkina Faso</i>
MIITG	Make It In The Gambia
MLS	Monitoring and Learning System
MMC	Mixed Migration Centre
MRRM	Migrant Resource and Response Mechanism
MSME	Micro, Small and Medium Enterprise
MUJAO	Movement of Oneness and Jihad in West Africa/Al-Mourabitoun
NEET	Youths not in education, employment or training
NGO	Non-Governmental Organisation
NRC	Norwegian Refugee Council
OCHA	United Nations Office for the Coordination of Humanitarian Affairs
OXFAM	Oxford Committee for Famine Relief
PACERSEN	<i>Projet d'Appui à la réduction de la migration à travers la Création d'Emplois Ruraux au Sénégal</i>

PAECSIS	<i>Programme d'appui au fonctionnement de l'état civil au Mali</i>
PAFAM	<i>Projet d'Appui à la Filière de l'Anacarde au Mali</i>
PAGS	<i>Appui à la coopération régionale des pays du G5 Sahel et au Collège Sahélien de Sécurité</i>
PAIERA	<i>Programme d'action à impact économique rapide à Agadez</i>
PARERBA	<i>Projet d'Appui à la Réduction de l'Emigration rurale et à la Réintégration dans le Bassin Arachidier par le développement d'une économie rurale sur base des périmètres irrigués</i>
PARSE	<i>Projet d'Appui à la Résilience Socio-Économique des Jeunes Vulnérables</i>
PARSEC	<i>Programme d'Appui au Renforcement de la Sécurité dans les régions de Mopti et de Gao et à la gestion des zones frontalières</i>
PASP	<i>Projet d'appui à la stabilité socioéconomique et à la paix dans la région d'Agadez</i>
PASREP	<i>Projet d'appui à la stabilisation et renforcement socio-économique des populations affectées par la migration irrégulière dans les zones de transit au Niger</i>
PASSERAZ	<i>Projet d'appui à la stabilité socioéconomique dans la région d'Agadez</i>
PECOBAT	<i>Amélioration de l'employabilité des jeunes et des capacités des PME par le développement du sous-secteur du BTP</i>
PEV	<i>Prévention de l'extrémisme violent</i>
PIESSE	<i>Projet d'appui à l'inclusion économique et sociale pour la stabilité et l'emploi des jeunes en Mauritanie</i>
PLASEPRI/PASPED	<i>Programme de contraste à la migration illégale à travers l'appui au Secteur Privé et à la création d'emplois au Sénégal</i>
PMM	Progettomondo.mlal
PNDP	<i>Programme National de Développement Participatif</i>
POC	Protection of Civilians
PPI	Positive Planet International
PRCPT	<i>Projet de Renforcement de la Résilience et de la Cohabitation Pacifique au Tchad</i>
PRESEC	<i>Projet de renforcement de la résilience des populations des régions septentrionales du Cameroun</i>
PRIAN	<i>Partenariat pour le Renforcement de la Résilience à l'Insécurité Alimentaire et Nutritionnelle au Nord Mali</i>
PRODECO	<i>Appui au déminage, à la protection sociale et au développement des personnes vulnérables</i>
ProGEM	<i>Renforcement de la gestion durable des conséquences des flux migratoires</i>
PROJES	<i>Programme Jeunesse Et Stabilisation</i>
PSE	<i>Plan Sénégal Emergent</i>
PSS	Strengthening Psychosocial Support, Mental Health, Reintegration and Protection Services for children in Borno, including children associated with Boko Haram
PUS BF	<i>Programme d'urgence Sahel du Burkina Faso</i>
RELAC	<i>Relance de l'économie et appui aux collectivités dans le nord du Mali</i>
RESILAC	<i>Soutien aux populations du Bassin du Lac Tchad</i>
RESILIAN	<i>Programme de redressement économique et social inclusif et de lutte contre l'insécurité alimentaire et nutritionnelle des territoires du nord Cameroun</i>
RESTE	<i>Résilience au Lac Tchad et Emploi</i>
RIEC	Rural Infrastructures for Employment Creation
RRR	Response Recovery and Resilience
RSAN	<i>Projet de renforcement de la sécurité alimentaire et nutritionnelle dans la région de Matam</i>
SAFIRE	<i>Programme de renforcement de la résilience des communautés urbaines et rurales vulnérables en Mauritanie</i>
SDNM	<i>Sécurité et développement au nord du Mali</i>
SECGEF	<i>Sécurité et Gestion des Frontières</i>
SECUTCHAD	<i>Appui à la formation et à la sécurité publique au Tchad</i>
SLC	Sahel and Lake Chad
SNV	SNV Netherlands Development Organisation
SURENI	Sustainable Return from Niger
TDH	Terres des Hommes
TEH	<i>Appui à la lutte contre la traite des personnes dans les pays du Golfe de Guinée</i>
TUUMA	<i>Appui à la compétence professionnelle, l'entreprenariat et l'emploi des jeunes en milieu rural dans des régions rurales du Burkina Faso</i>
TVET	Technical and Vocational Education and Training
UN	United Nations
UNCDF	United Nations Capital Development Fund
UNDP	United Nations Development Programme
UNHCR	United Nations High Commissioner for Refugees
UNICEF	United Nations Children's Fund

UNW	United Nations Women
USD	United States Dollar
VSF	<i>Vétérinaires Sans Frontières</i>
VSLA	Village Savings and Loans Association
WAPIS	Support to the strengthening of police information systems in the broader West Africa region
WASH	Water, sanitation and hygiene
WFP	World Food Programme
WHO	World Health Organization
YEP	Youth Empowerment Project

1.2. OVERVIEW BY INDICATOR

1.2.1. STRATEGIC OBJECTIVE 1: GREATER ECONOMIC AND EMPLOYMENT OPPORTUNITIES

Figure 1: EUTF Indicator 1.1, SLC window, December 2019

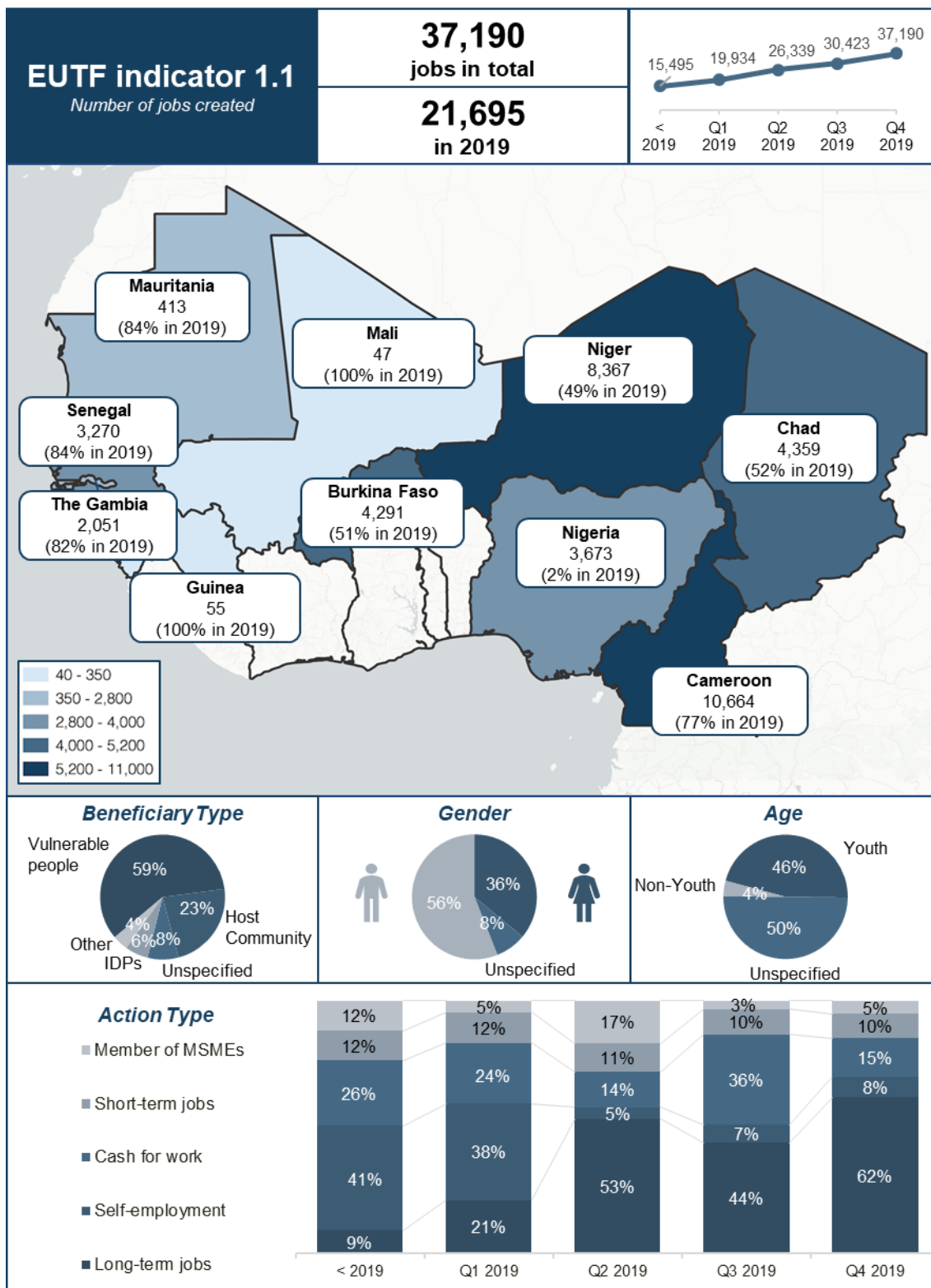


Figure 2: EUTF Indicator 1.2, SLC window, December 2019

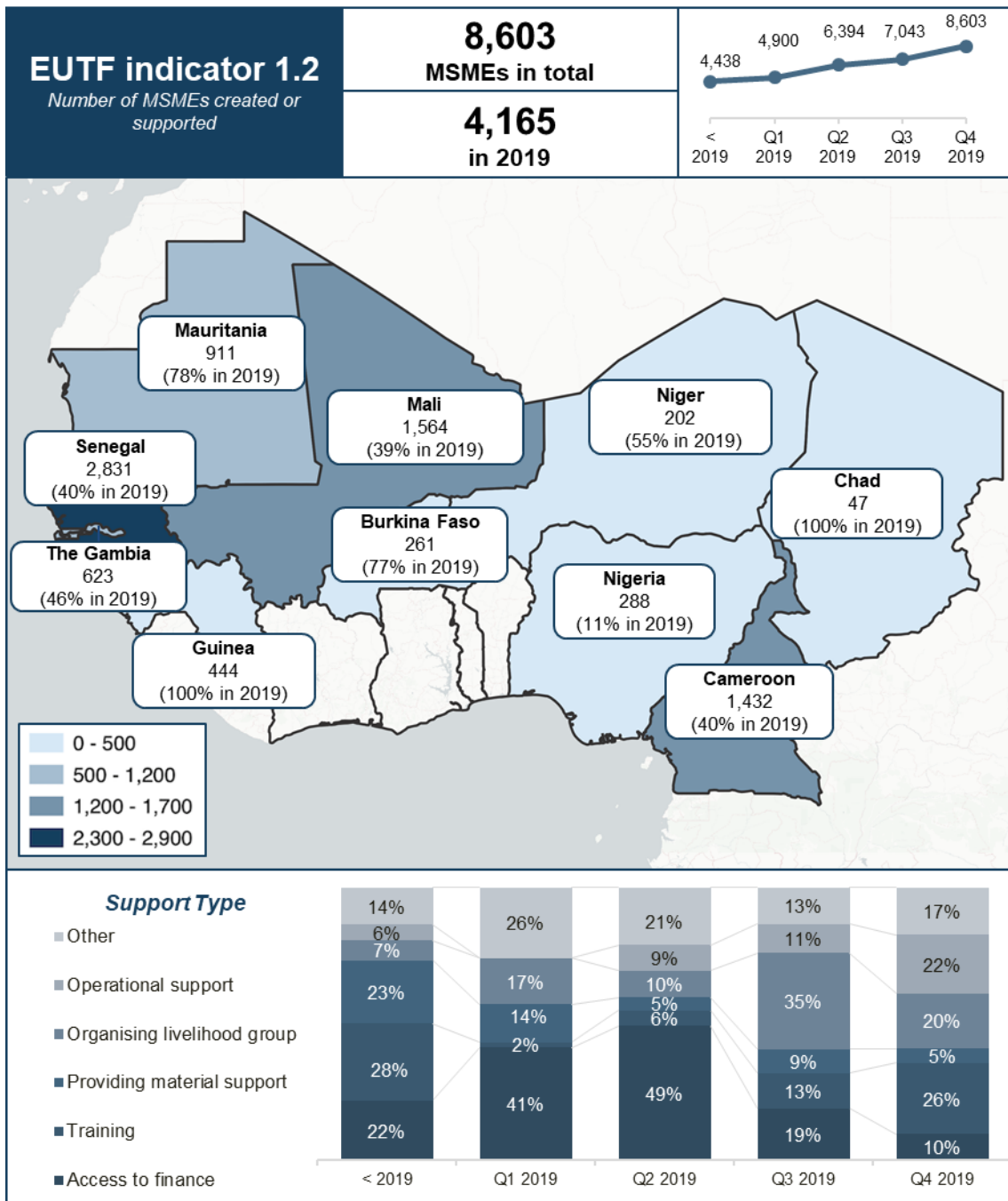


Figure 3: EUTF Indicator 1.3, SLC window, December 2019

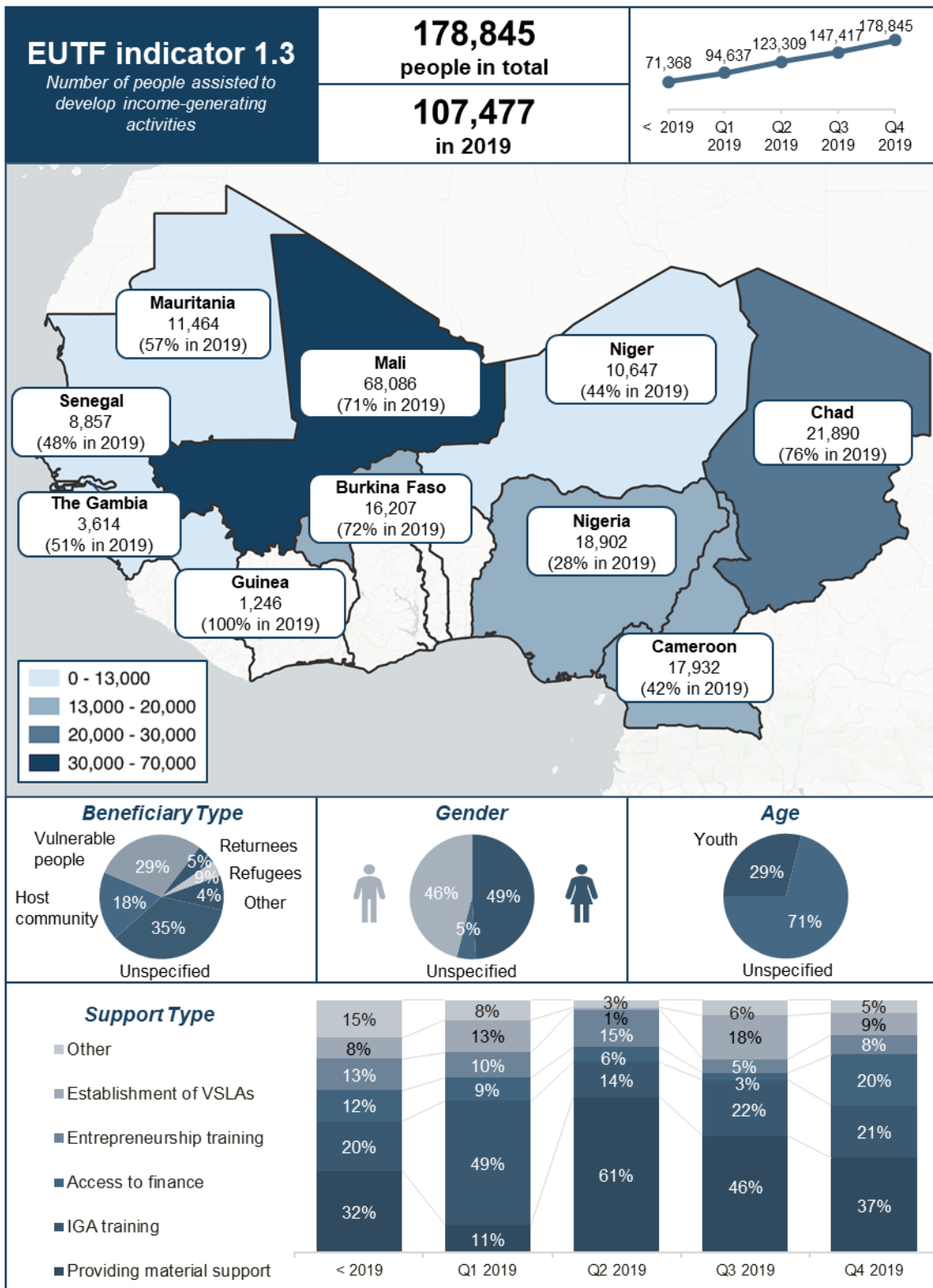


Figure 4: EUTF Indicator 1.4, SLC window, December 2019

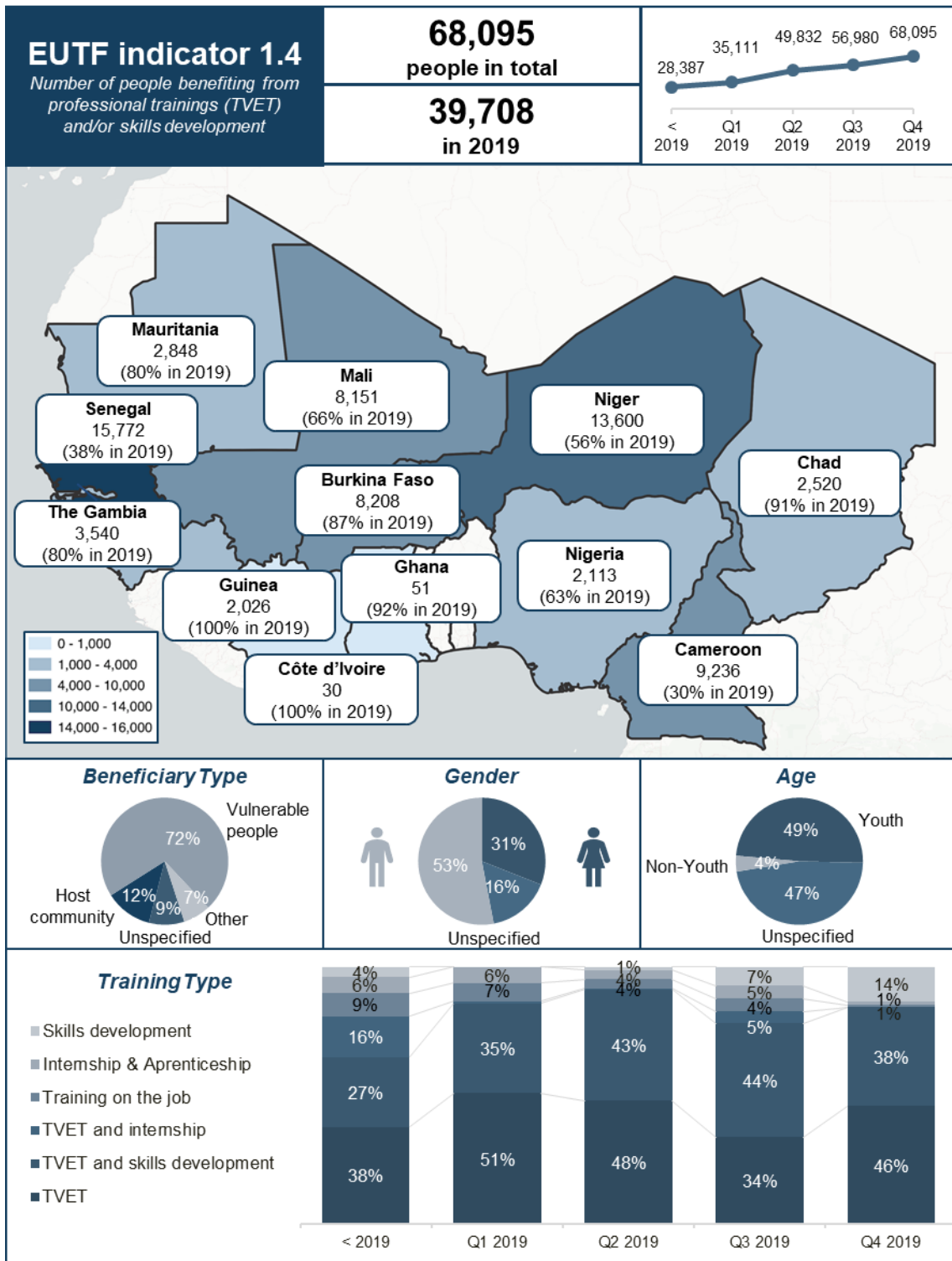


Figure 5: EUTF Indicator 1.5, SLC window, December 2019

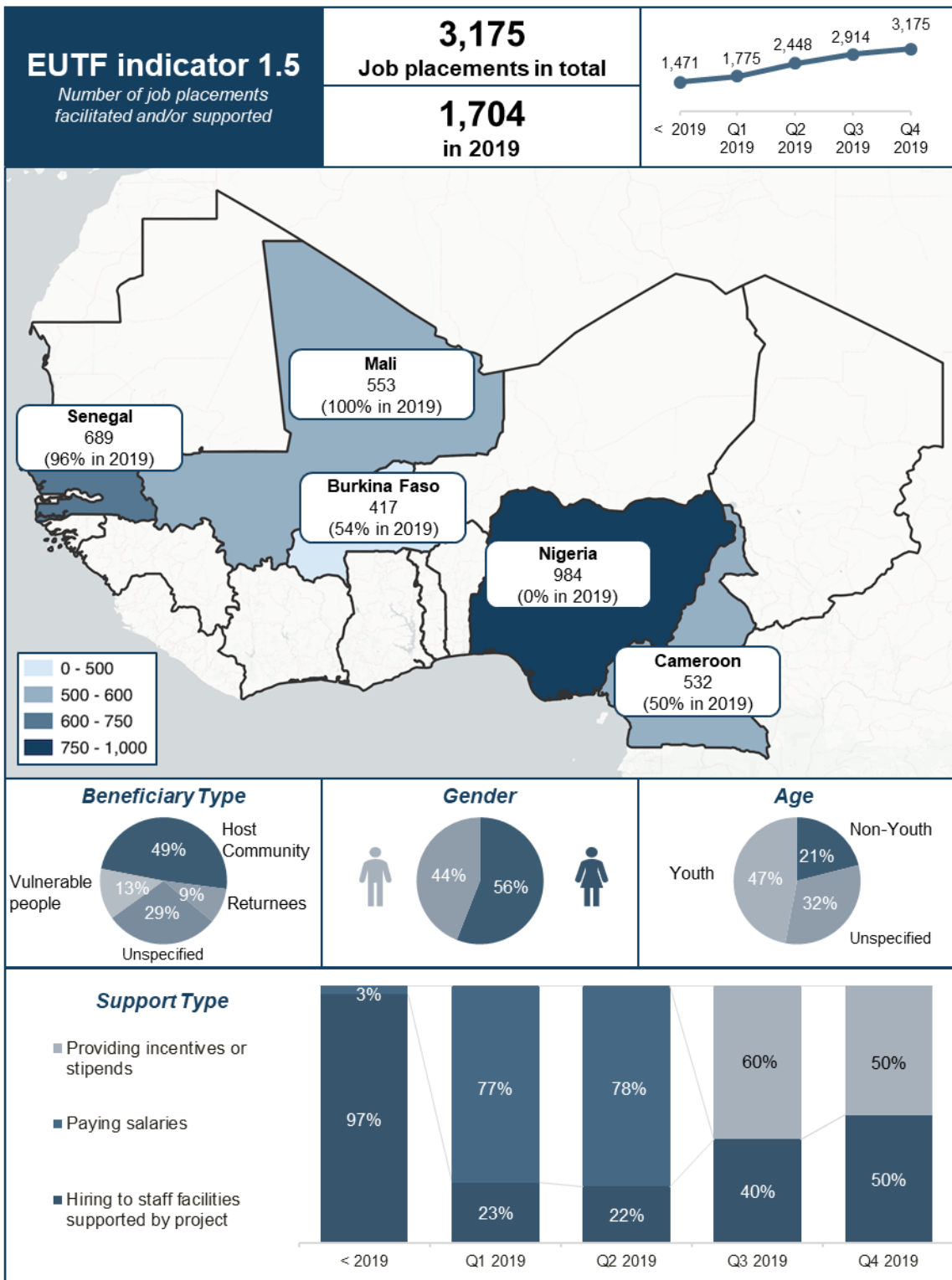


Figure 6: EUTF Indicator 1.6, SLC window, December 2019

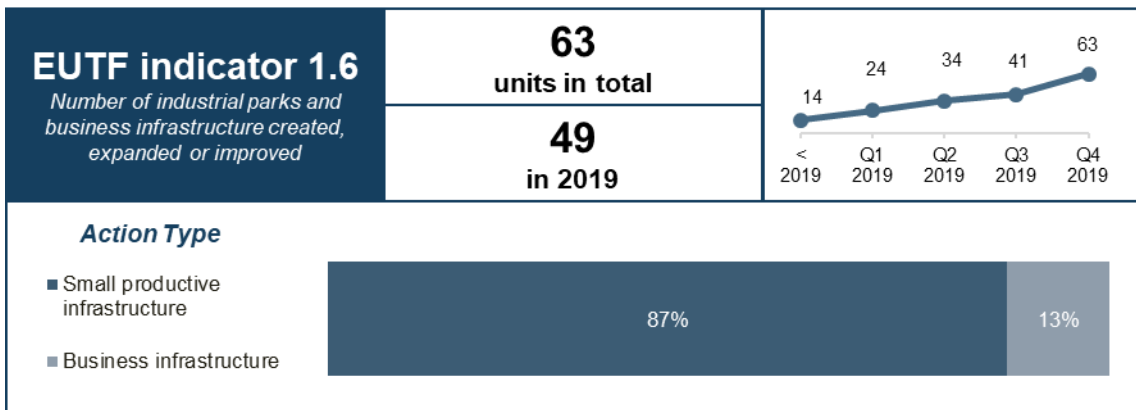
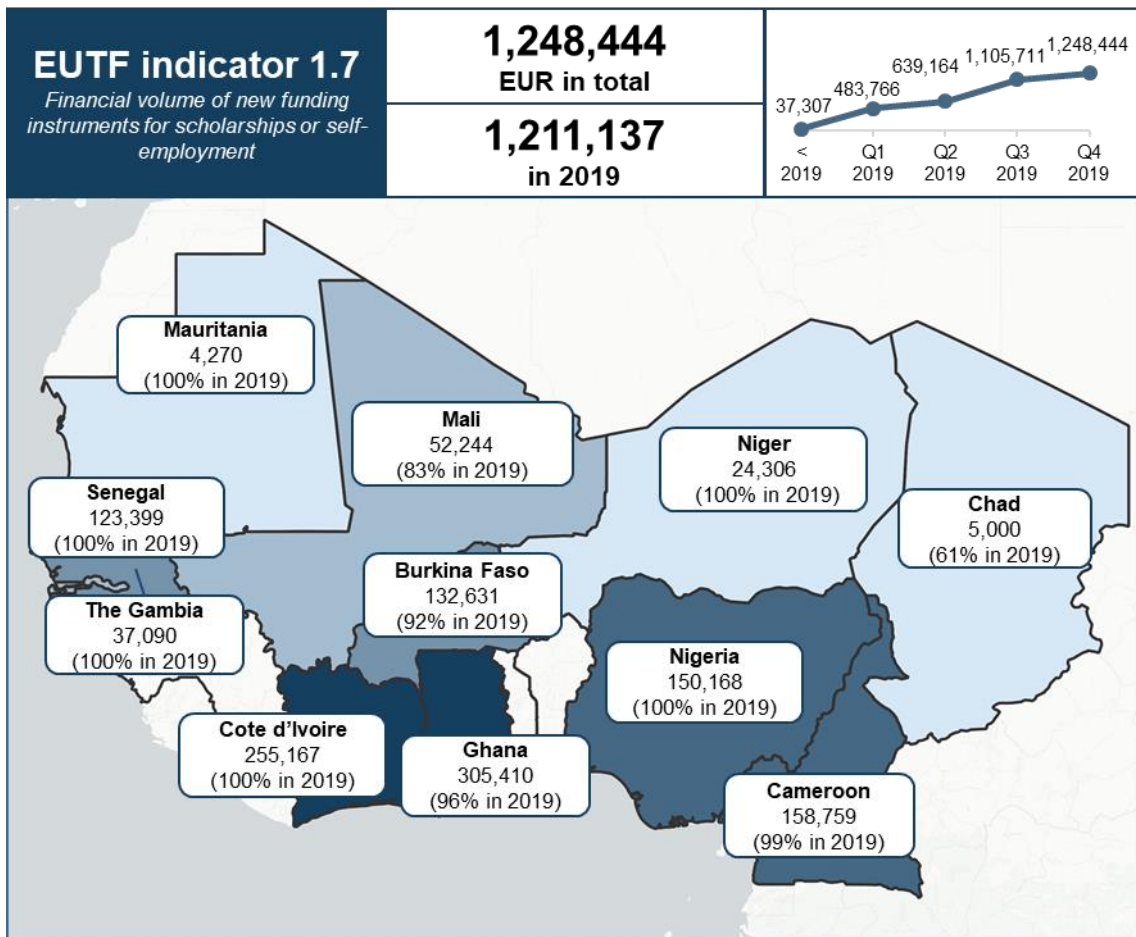


Figure 7: EUTF Indicator 1.7, SLC window, December 2019



1.2.2. STRATEGIC OBJECTIVE 2: STRENGTHENING THE RESILIENCE OF COMMUNITIES

Figure 7: EUTF Indicator 2.1, SLC window, December 2019

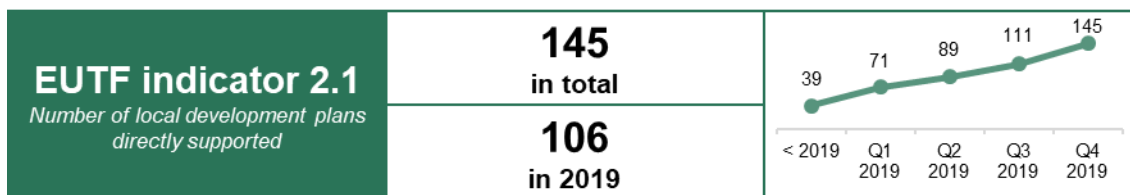


Figure 8: EUTF Indicator 2.1 bis, SLC window, December 2019

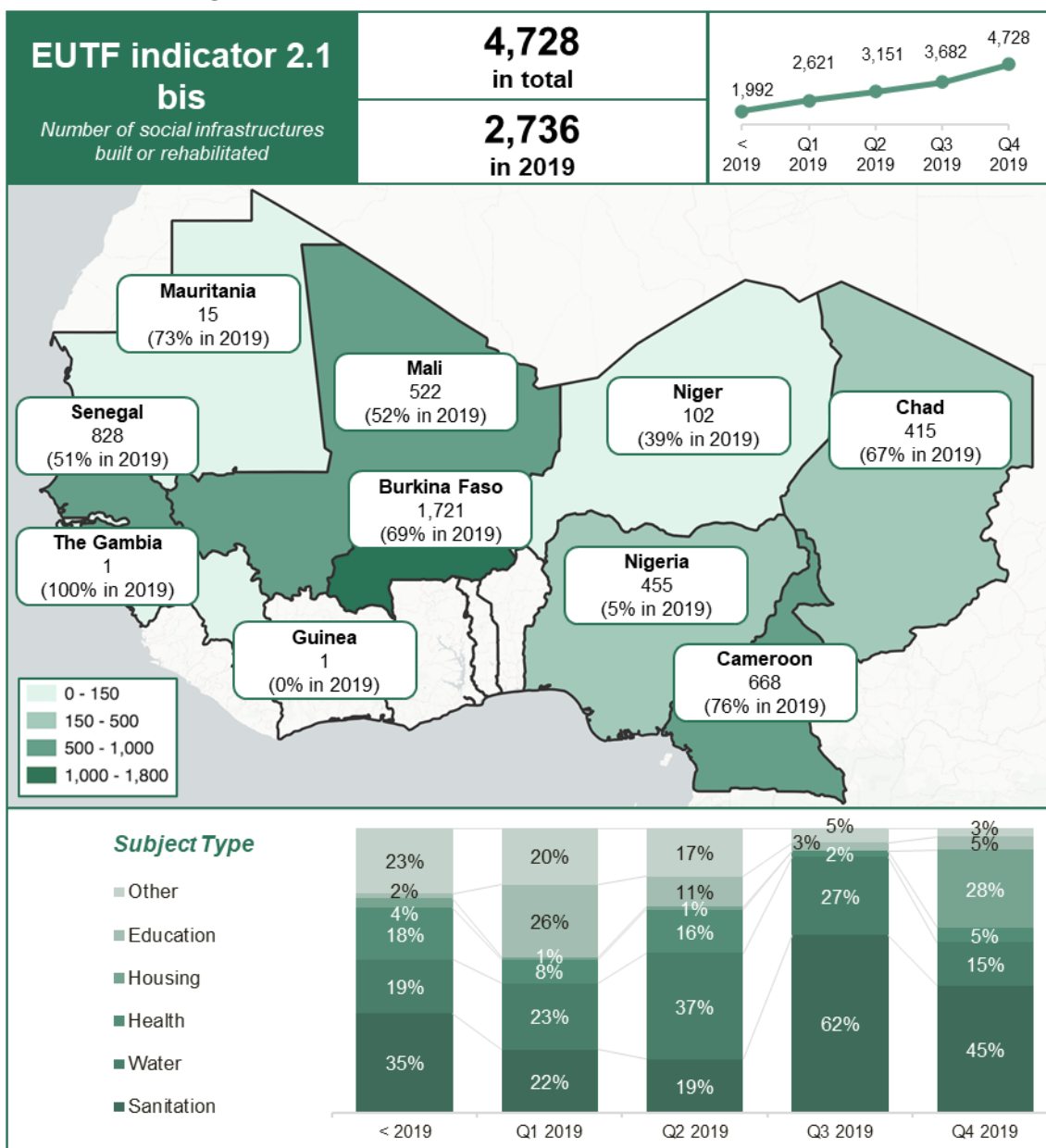


Figure 9: EUTF Indicator 2.2, SLC window, December 2019

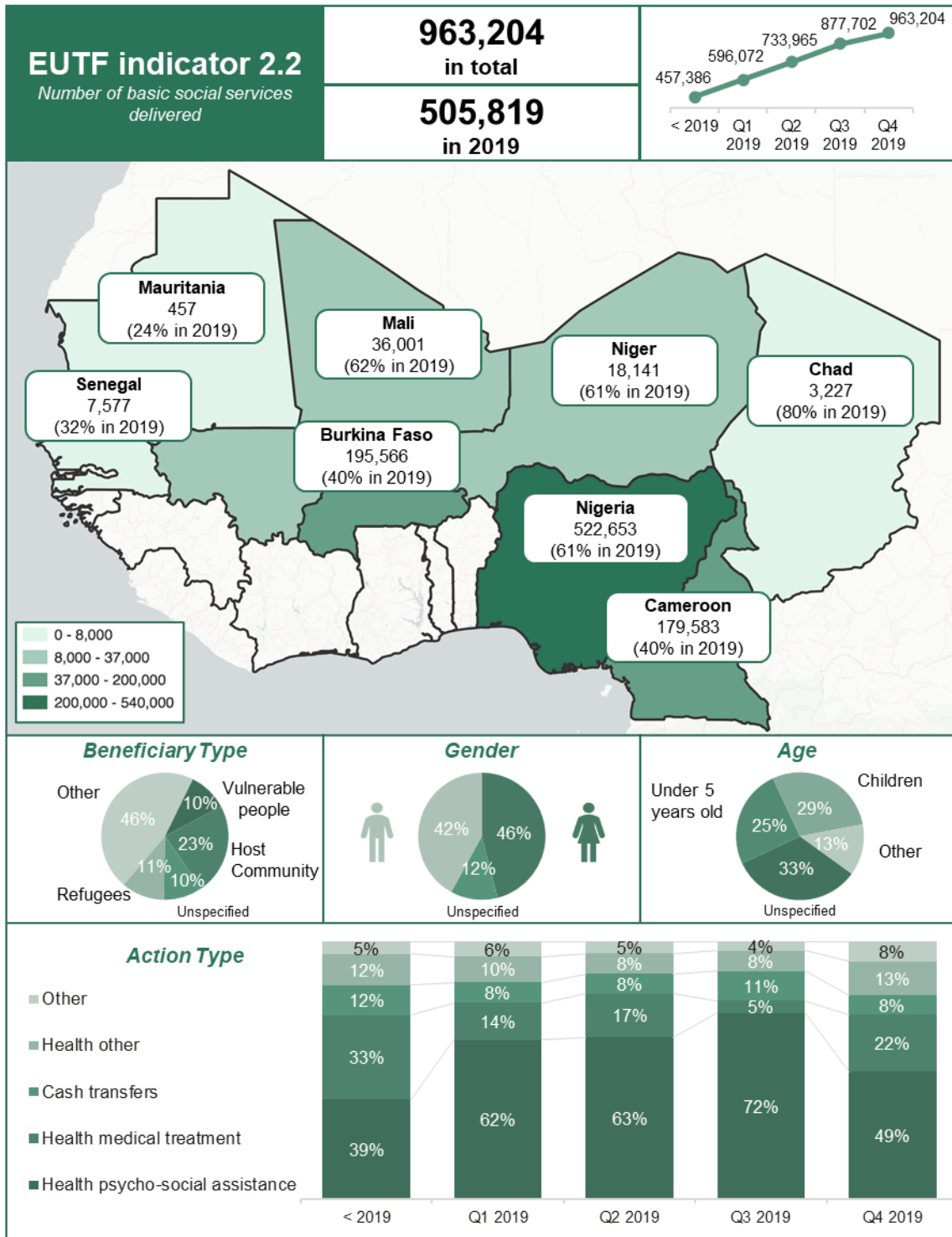


Figure 10: EUTF Indicator 2.3, SLC window, December 2019

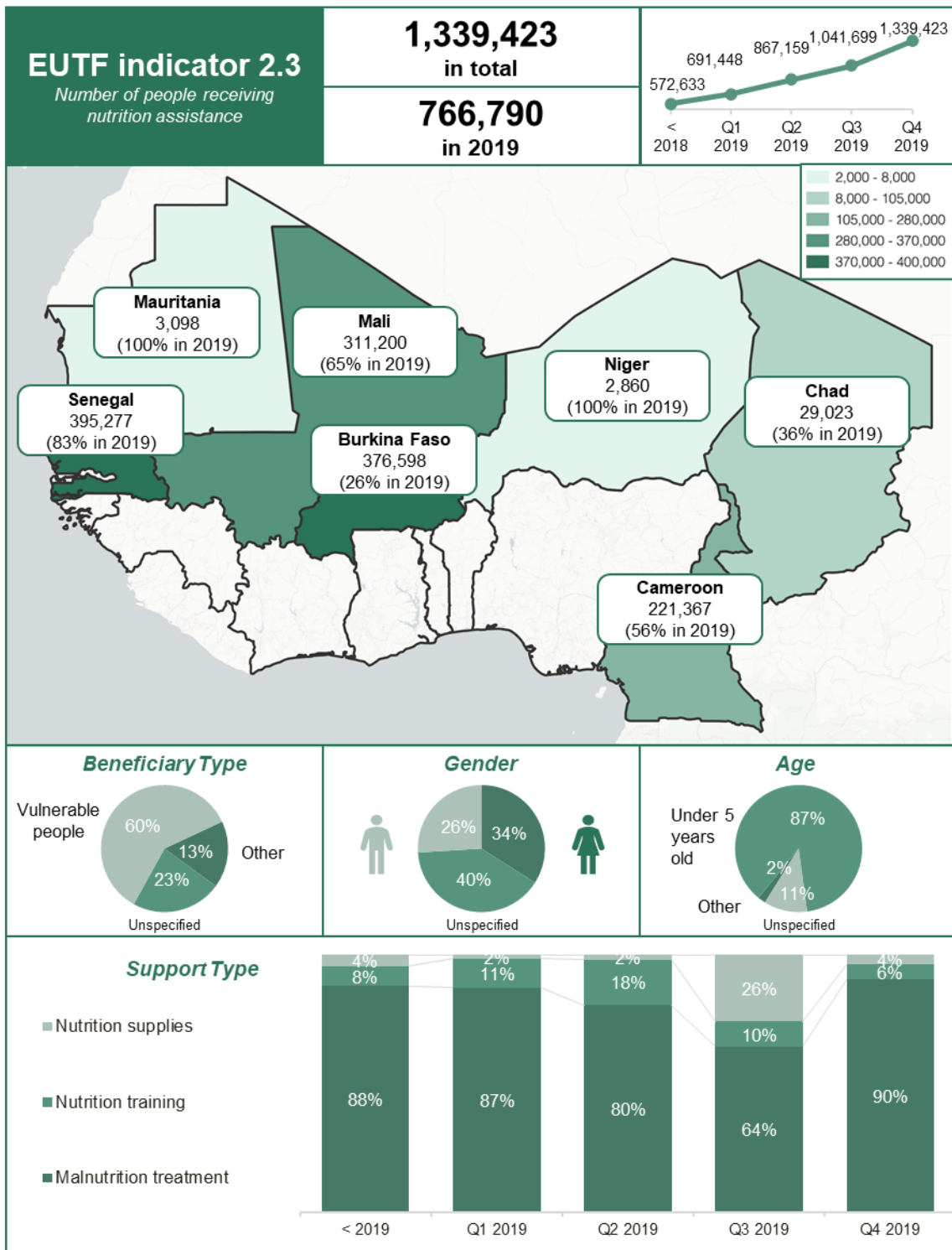


Figure 11: EUTF Indicator 2.4, SLC window, December 2019

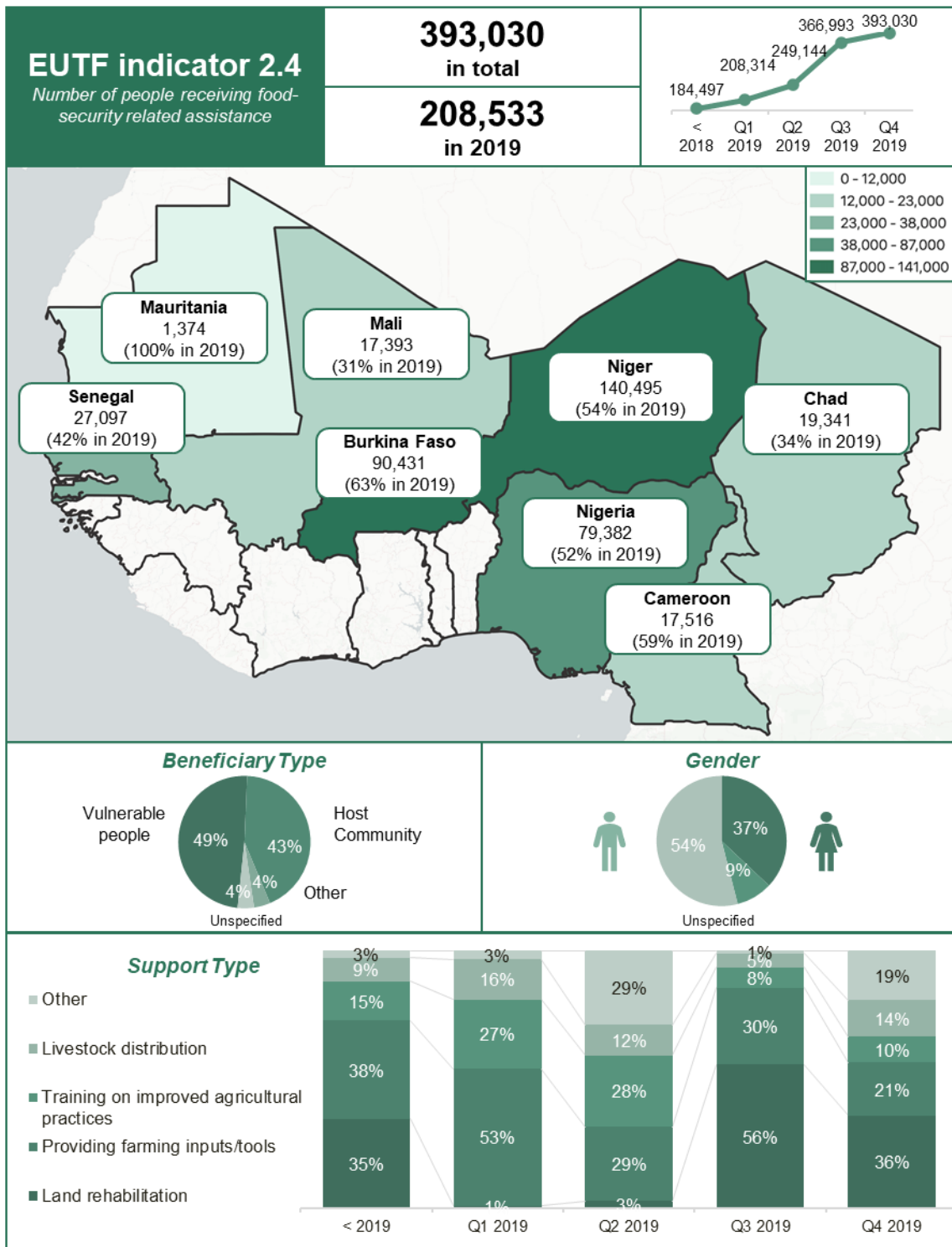


Figure 12: EUTF Indicator 2.5, SLC window, December 2019

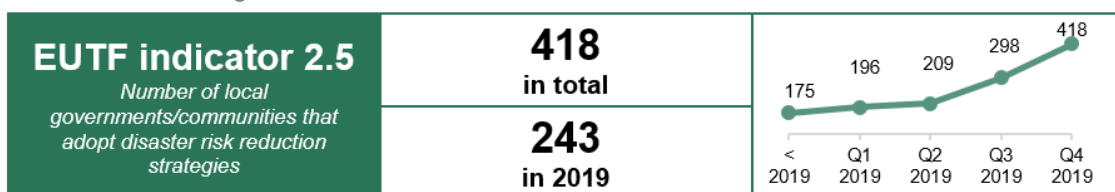


Figure 13: EUTF Indicator 2.6, SLC window, December 2019

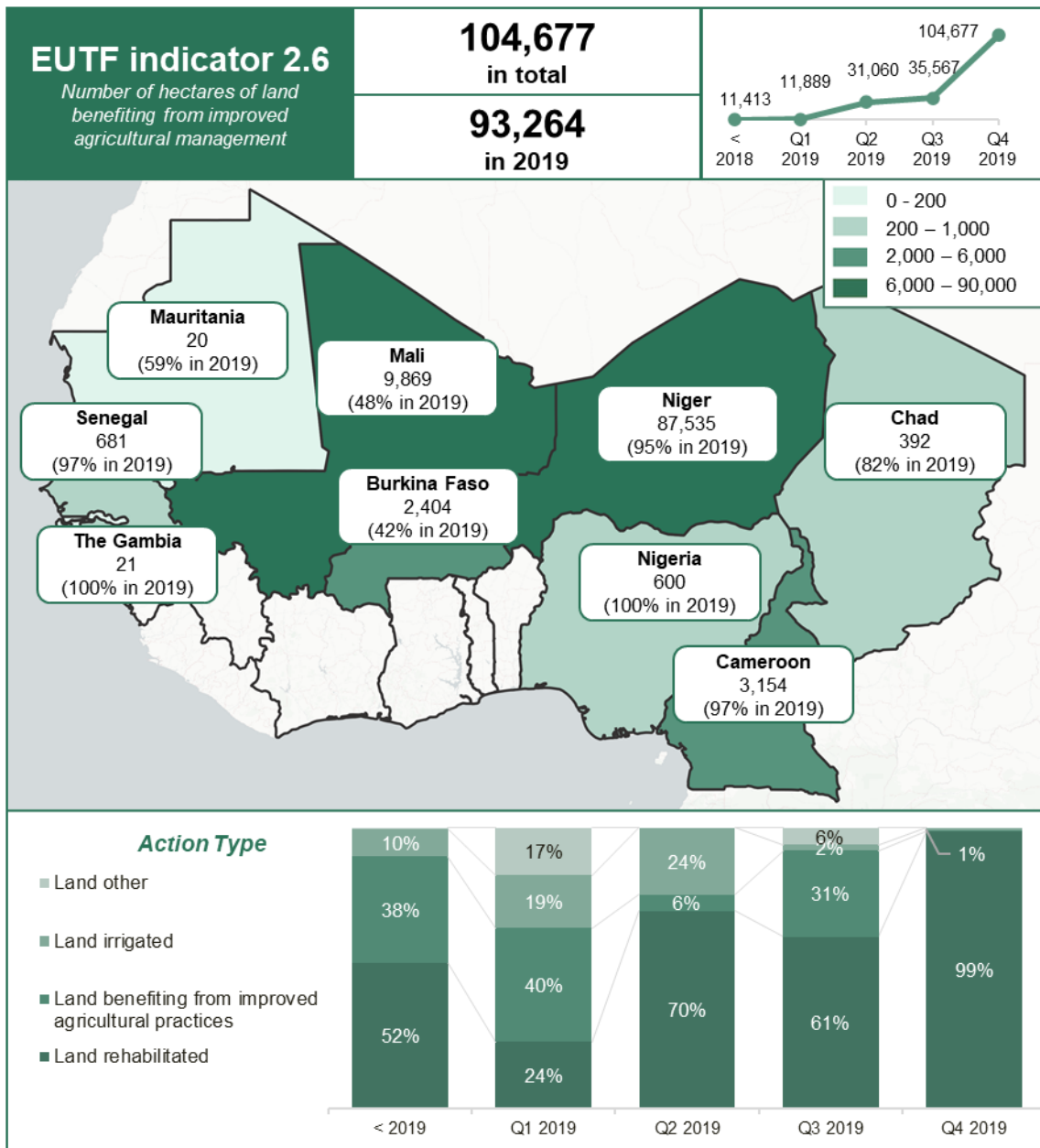


Figure 14: EUTF Indicator 2.7, SLC window, December 2019

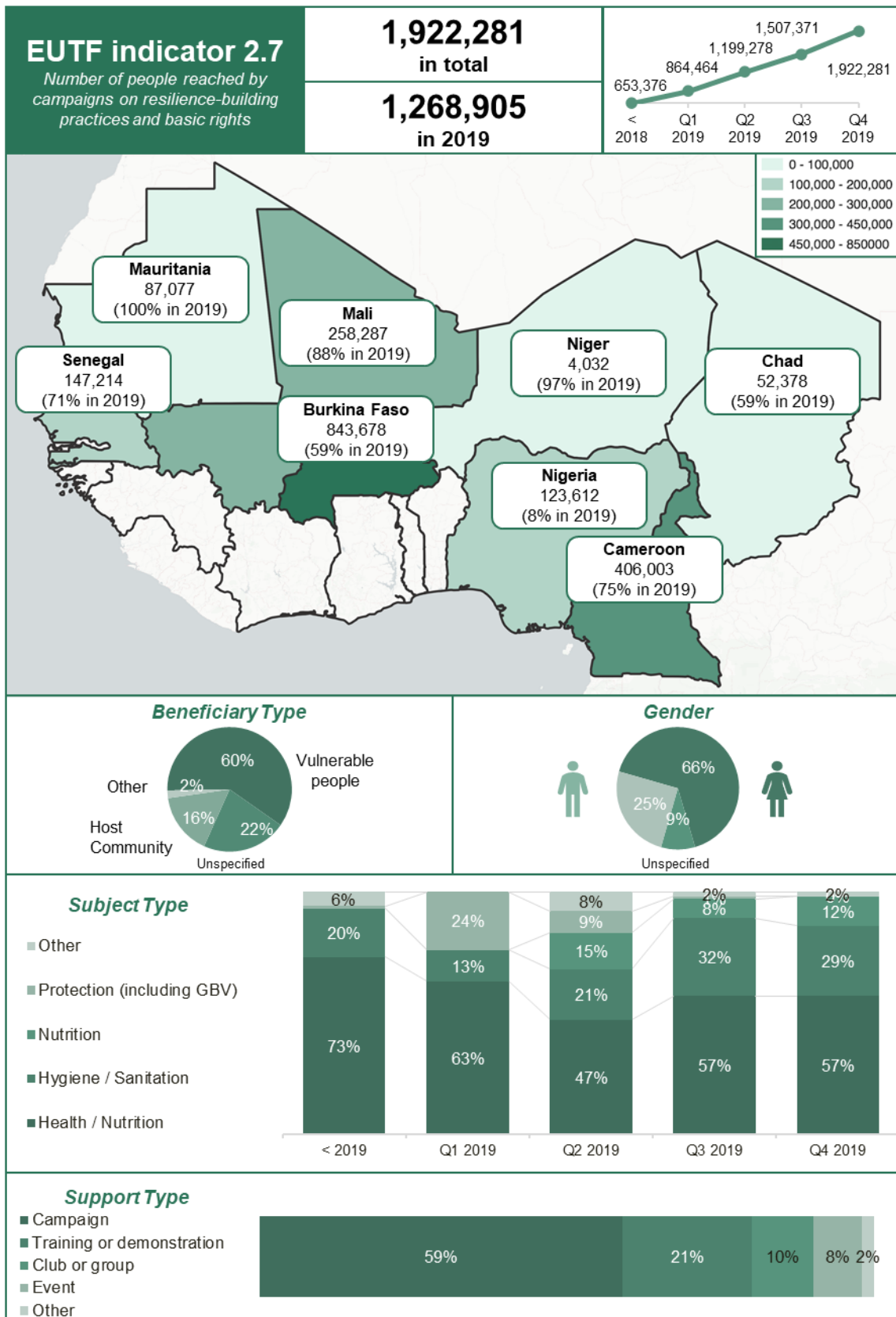


Figure 15: EUTF Indicator 2.8, SLC window, December 2019

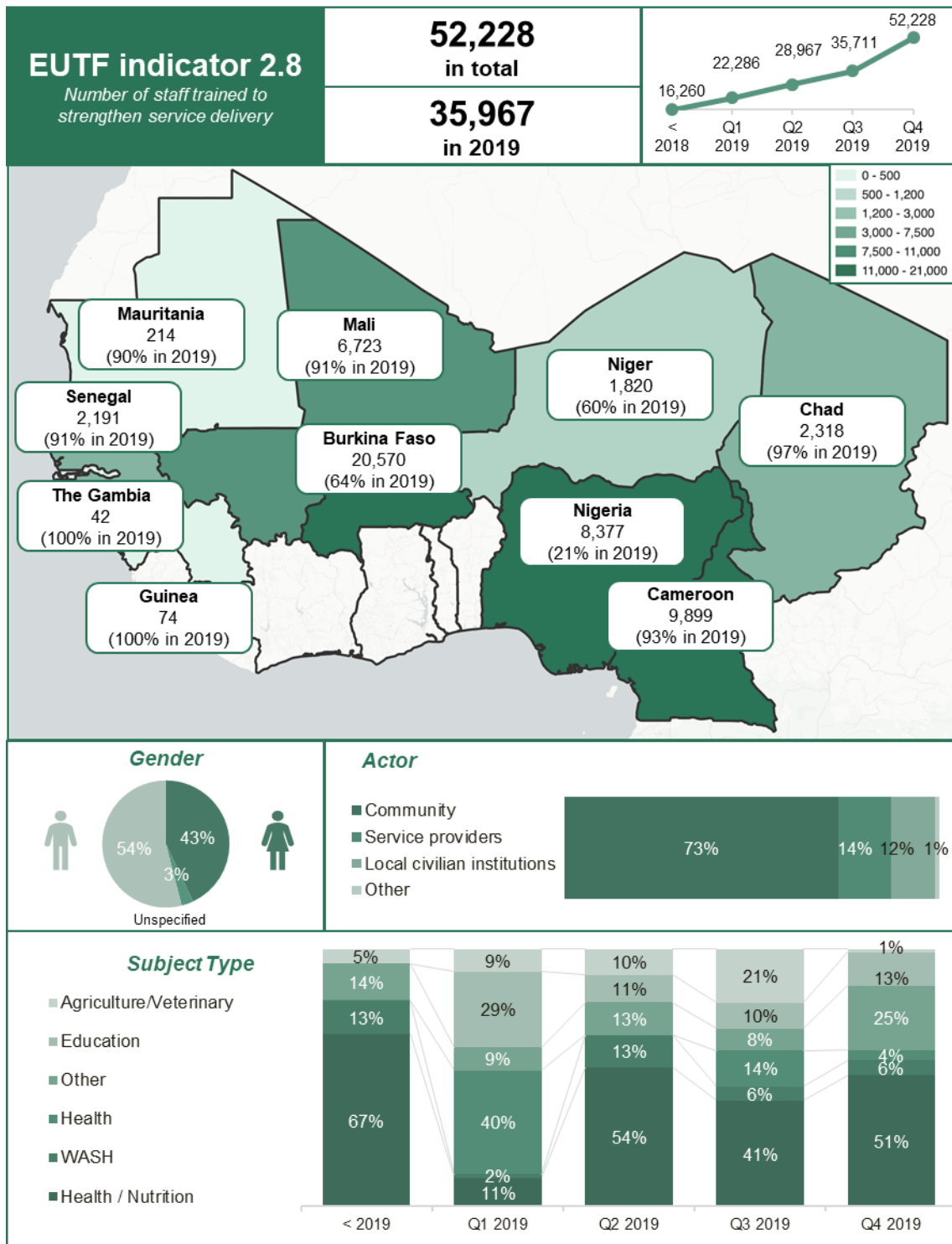
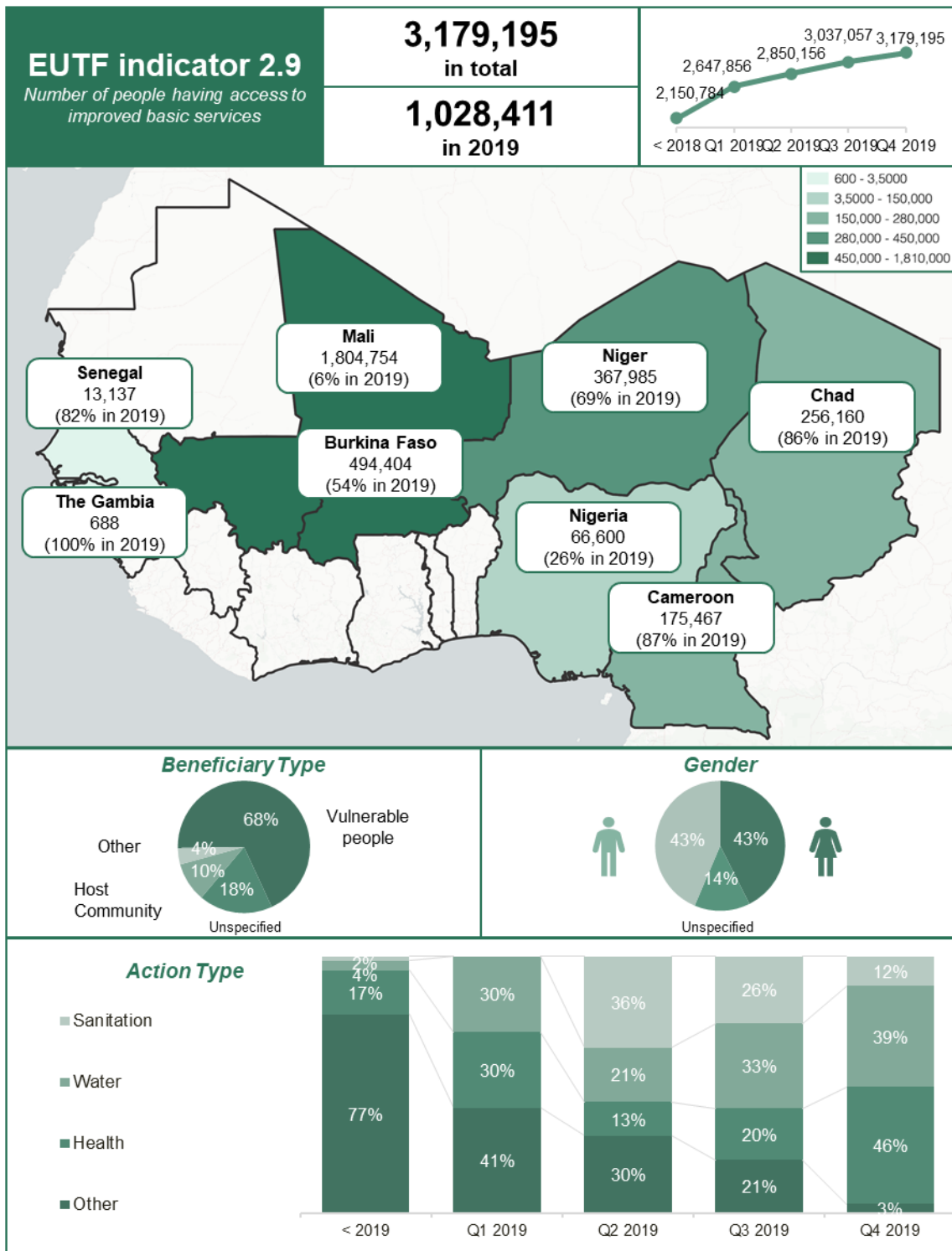


Figure 16: EUTF Indicator 2.9, SLC window, December 2019



1.2.3. STRATEGIC OBJECTIVE 3: IMPROVED MIGRATION MANAGEMENT

One indicator of the SO3 is not represented here, 3.9 (Number of early warning systems on migration flows created). No early warning system on migration flows has been created in the SLC region in 2019 since the creation of 26 Flow Monitoring Points in 2018.

Figure 17: EUTF Indicator 3.1, SLC window, December 2019

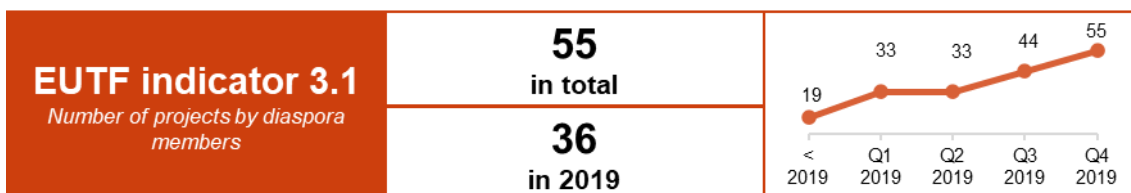


Figure 18: EUTF Indicator 3.2, SLC window, December 2019

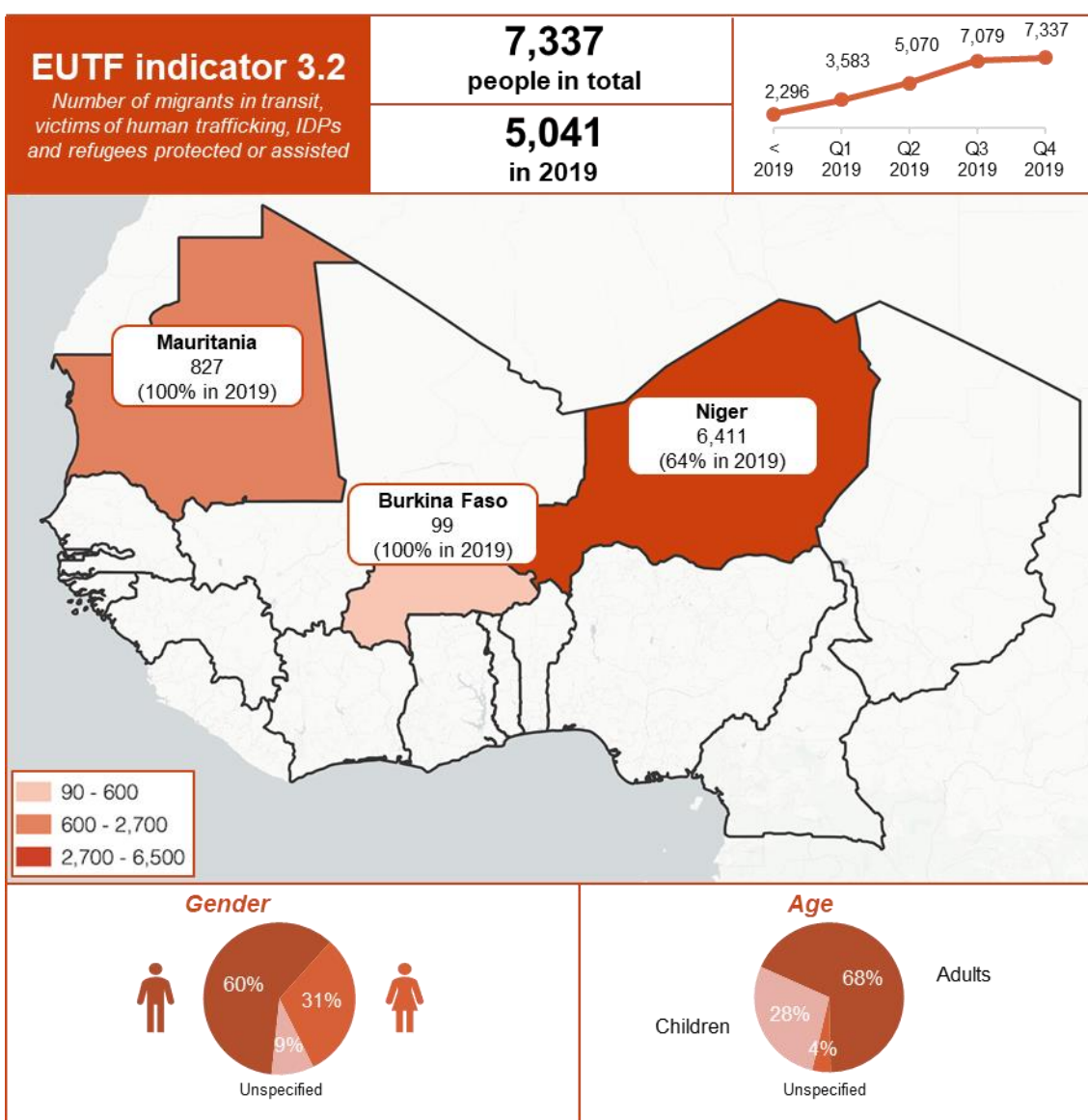


Figure 19: EUTF Indicator 3.3, SLC window, December 2019

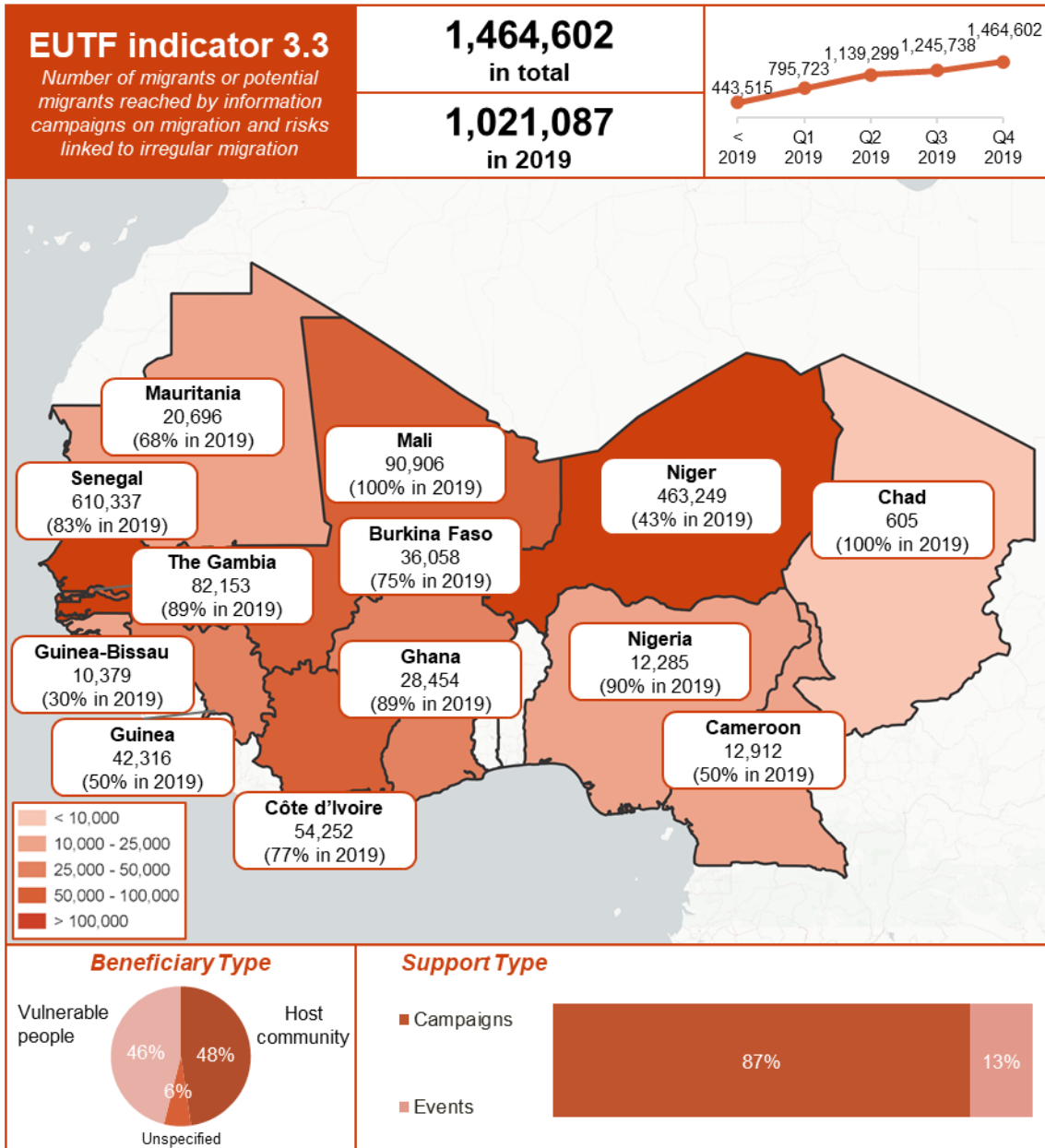


Figure 20: EUTF Indicator 3.4, SLC window, December 2019

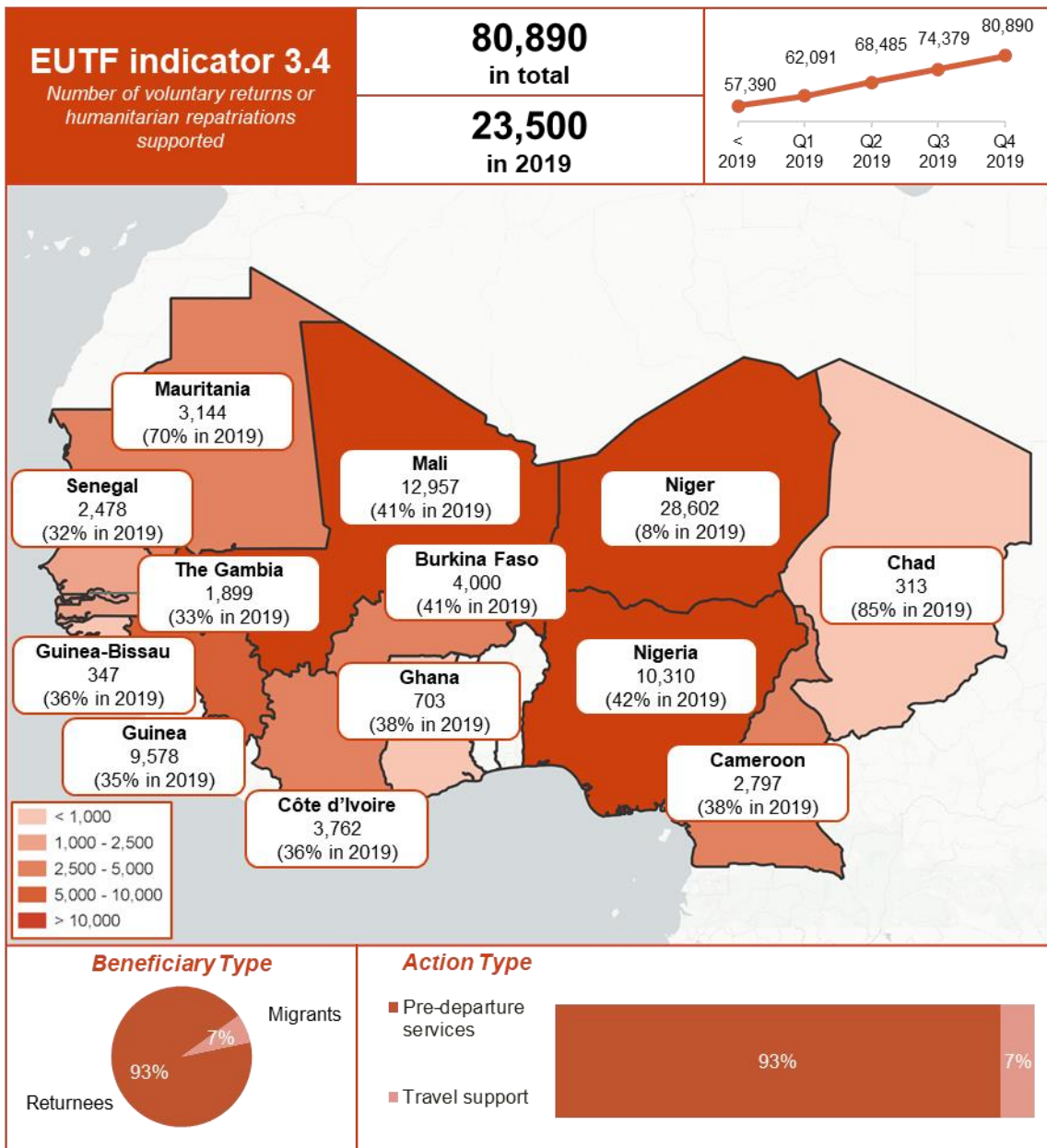


Figure 21: EUTF Indicator 3.5, SLC window, December 2019

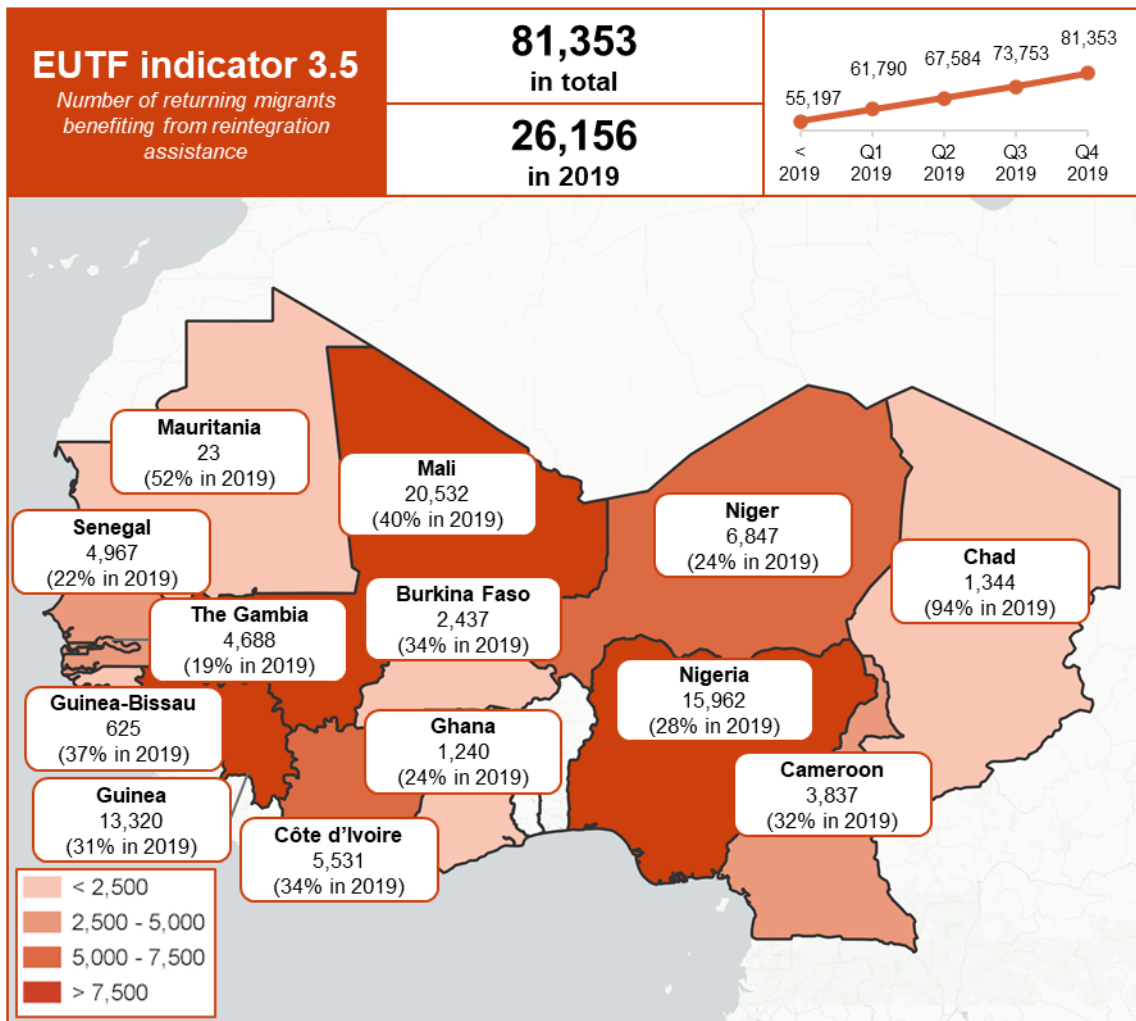


Figure 22: EUTF Indicator 3.6, SLC window, December 2019

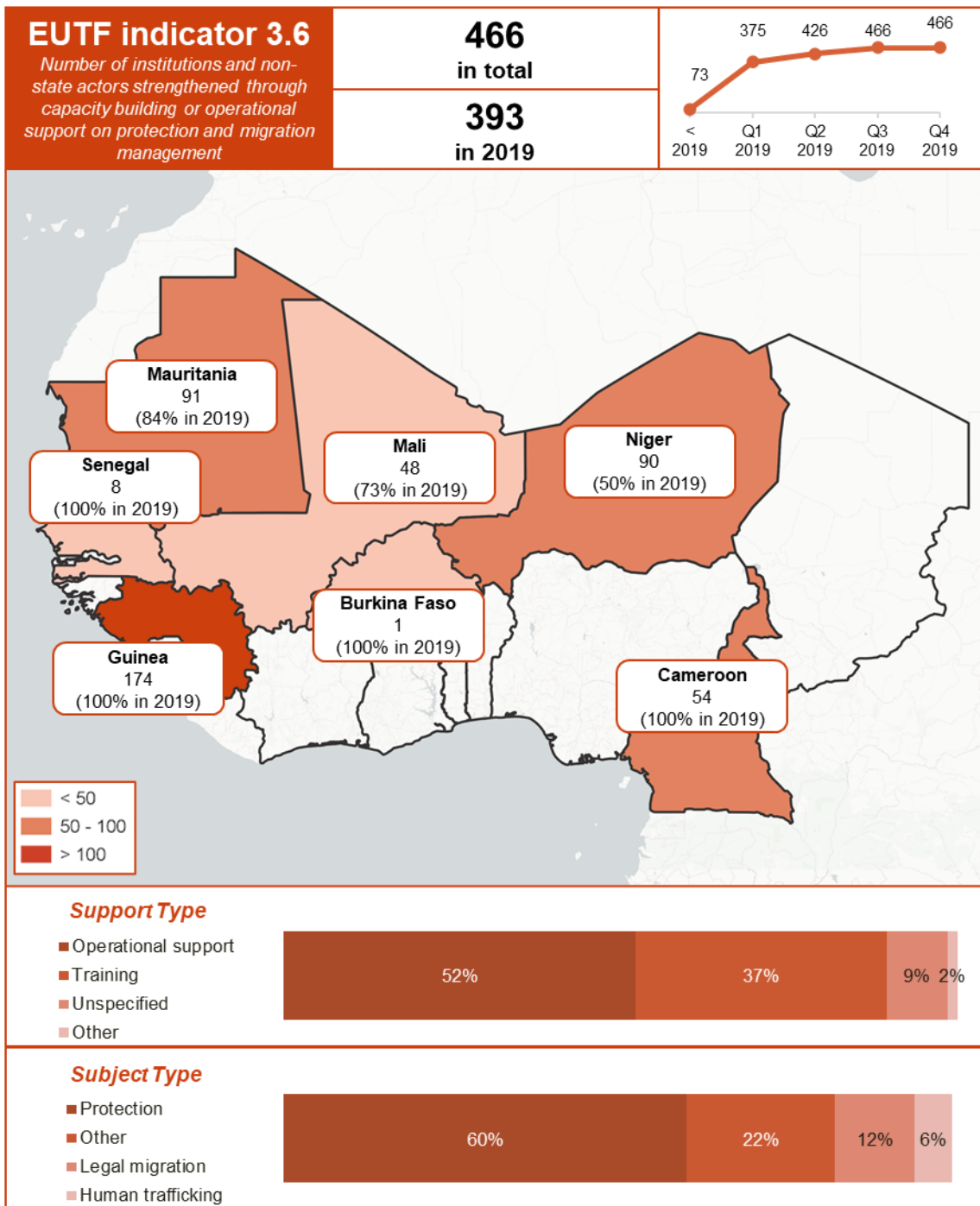


Figure 23: EUTF Indicator 3.7, SLC window, December 2019

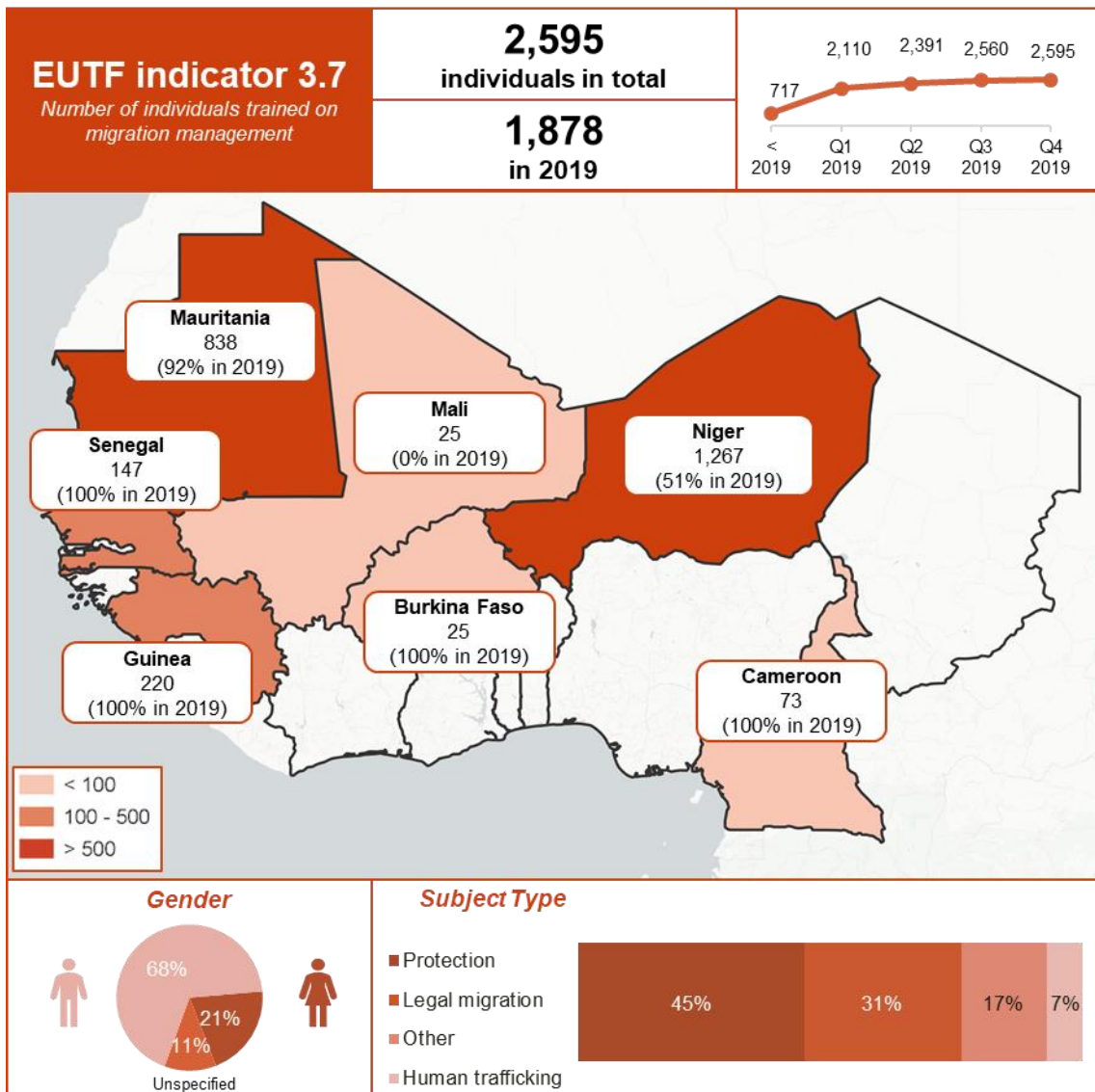


Figure 24: EUTF Indicator 3.8, SLC window, December 2019

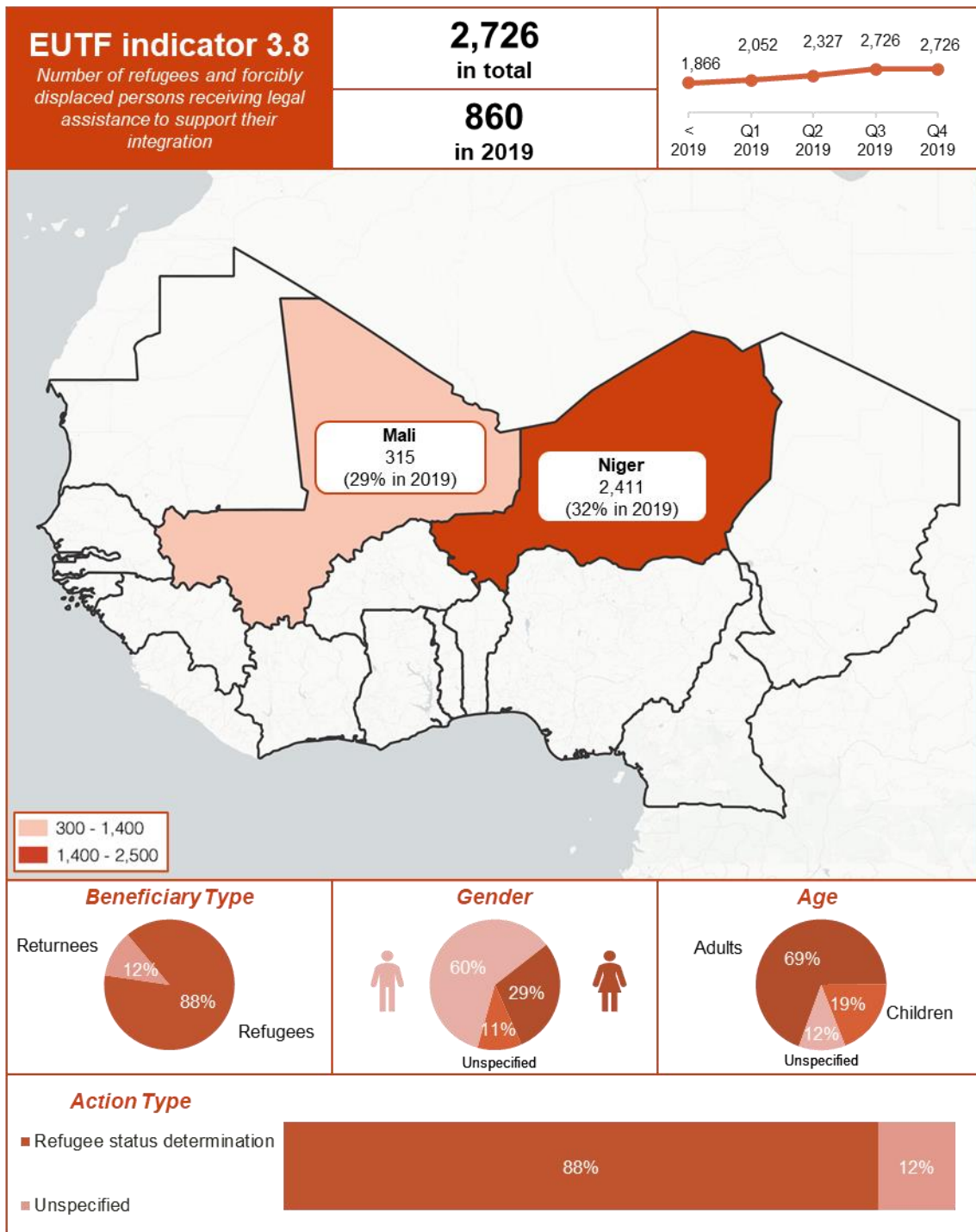


Figure 25: EUTF Indicator 3.10, SLC window, December 2019



1.2.4. STRATEGIC OBJECTIVE 4: IMPROVED GOVERNANCE AND CONFLICT PREVENTION AND REDUCTION OF FORCED DISPLACEMENT AND IRREGULAR MIGRATION

Two indicators of the SO4 are not represented here, 4.4 and 4.7. One female victim of trafficking has been assisted in The Gambia in Q2 2019 and informs indicator 4.4: Number of victims of trafficking assisted or referred to assistance services. No activity in the SLC region has contributed to outputs for indicator 4.7: number of refugees benefiting from an out-of-camp policy

Figure 26: EUTF Indicator 4.1, SLC window, December 2019



Figure 27: EUTF Indicator 4.2, SLC window, December 2019

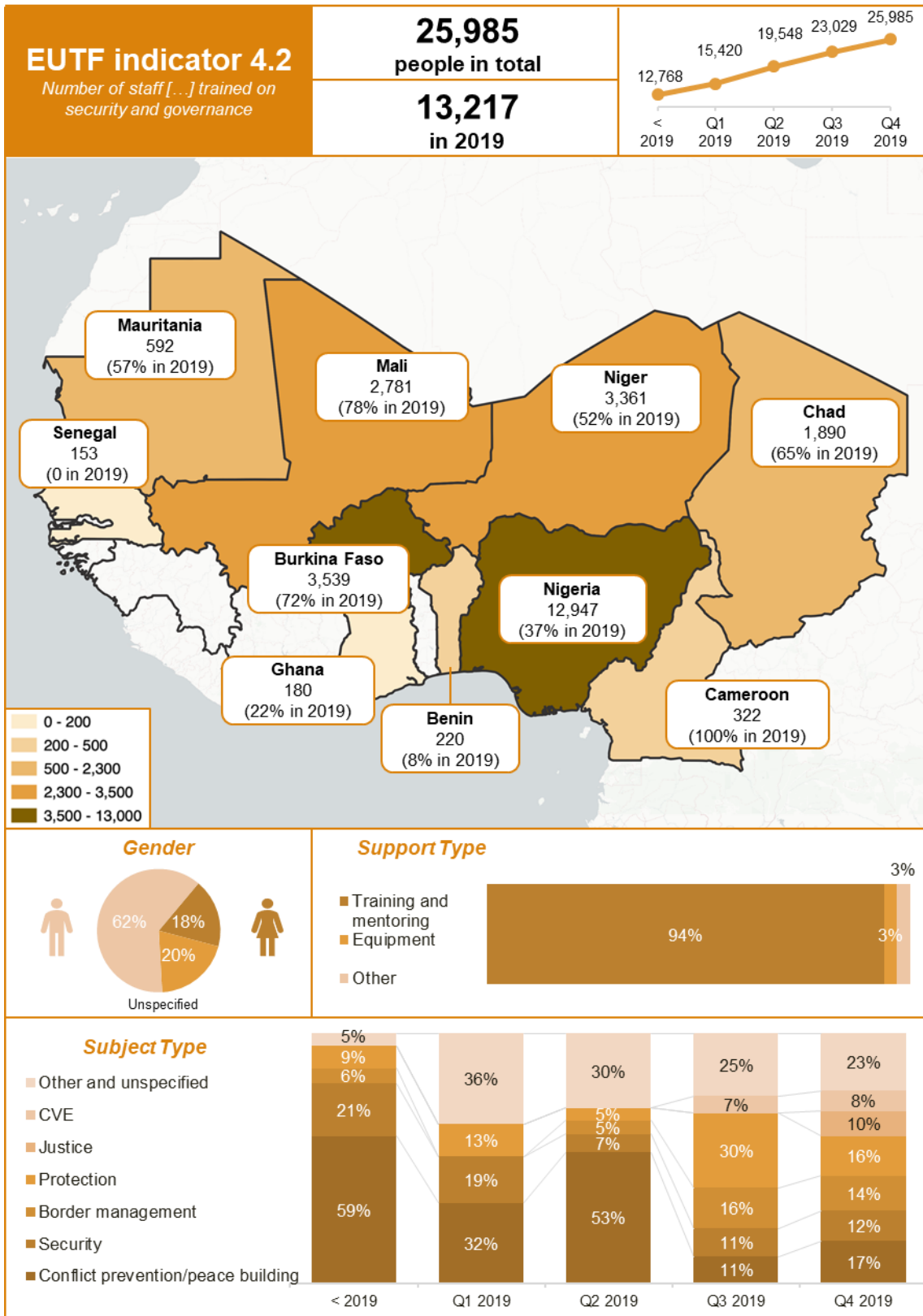


Figure 28: EUTF Indicator 4.2 bis, SLC window, December 2019

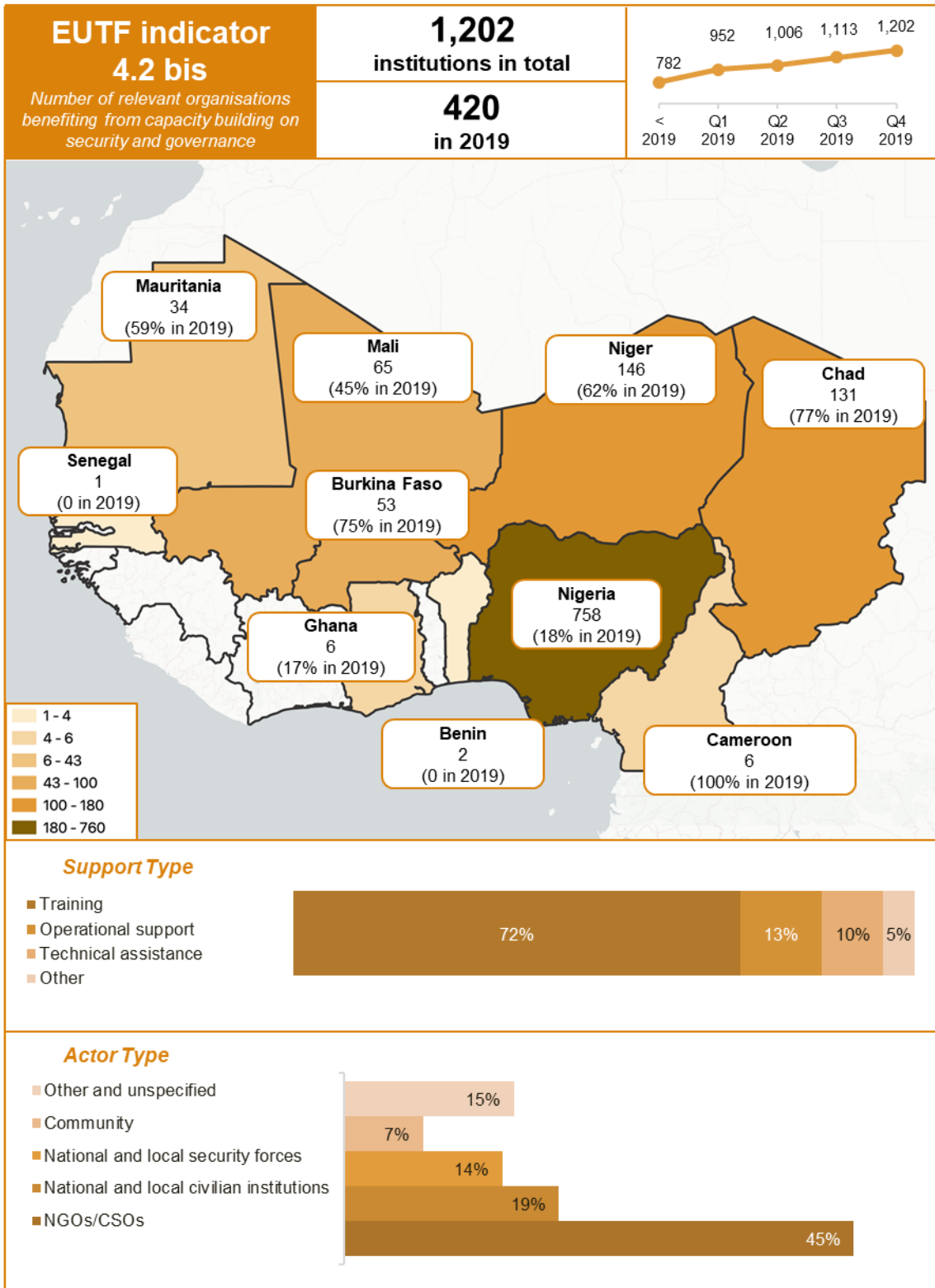


Figure 29: EUTF Indicator 4.3, SLC window, December 2019

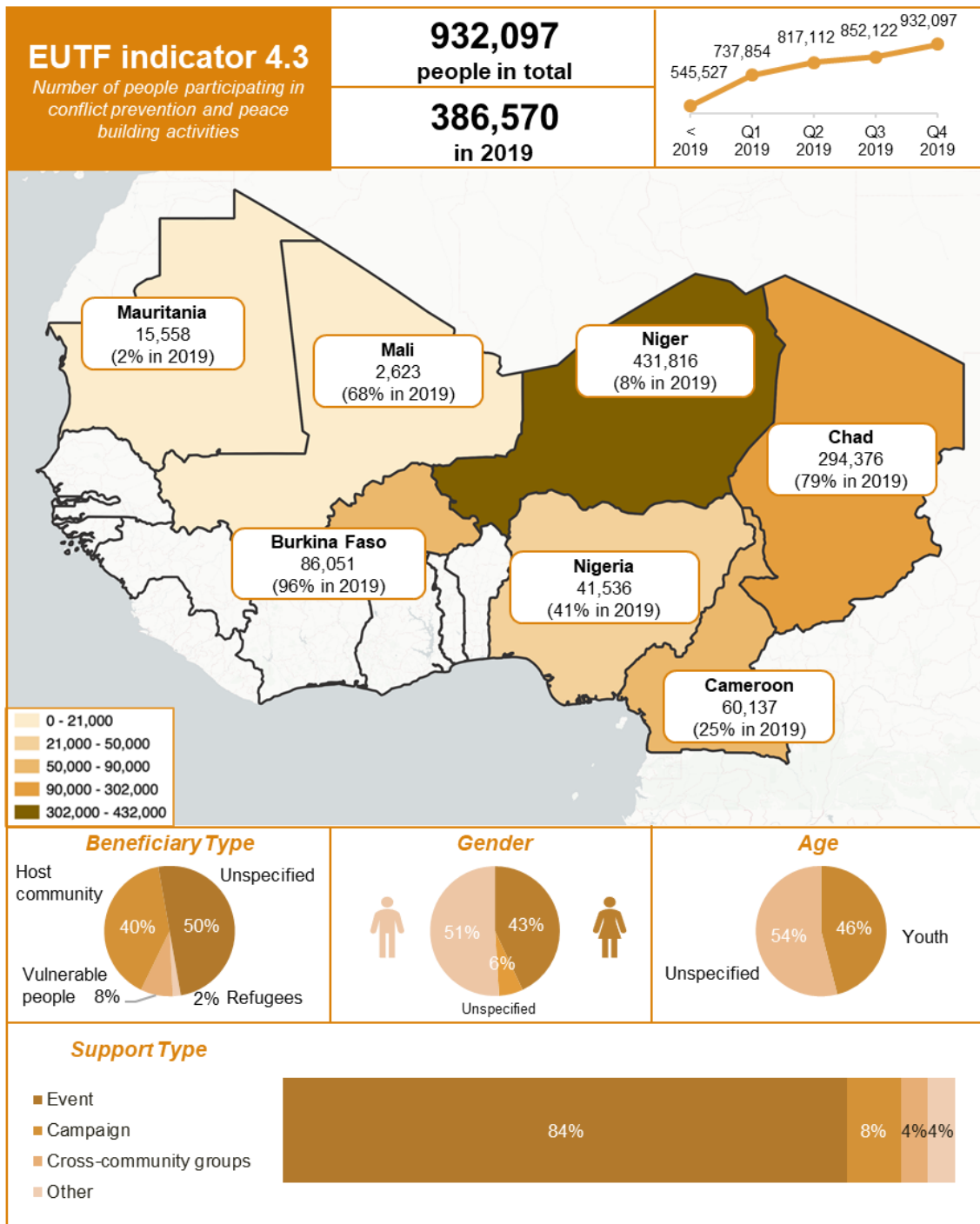
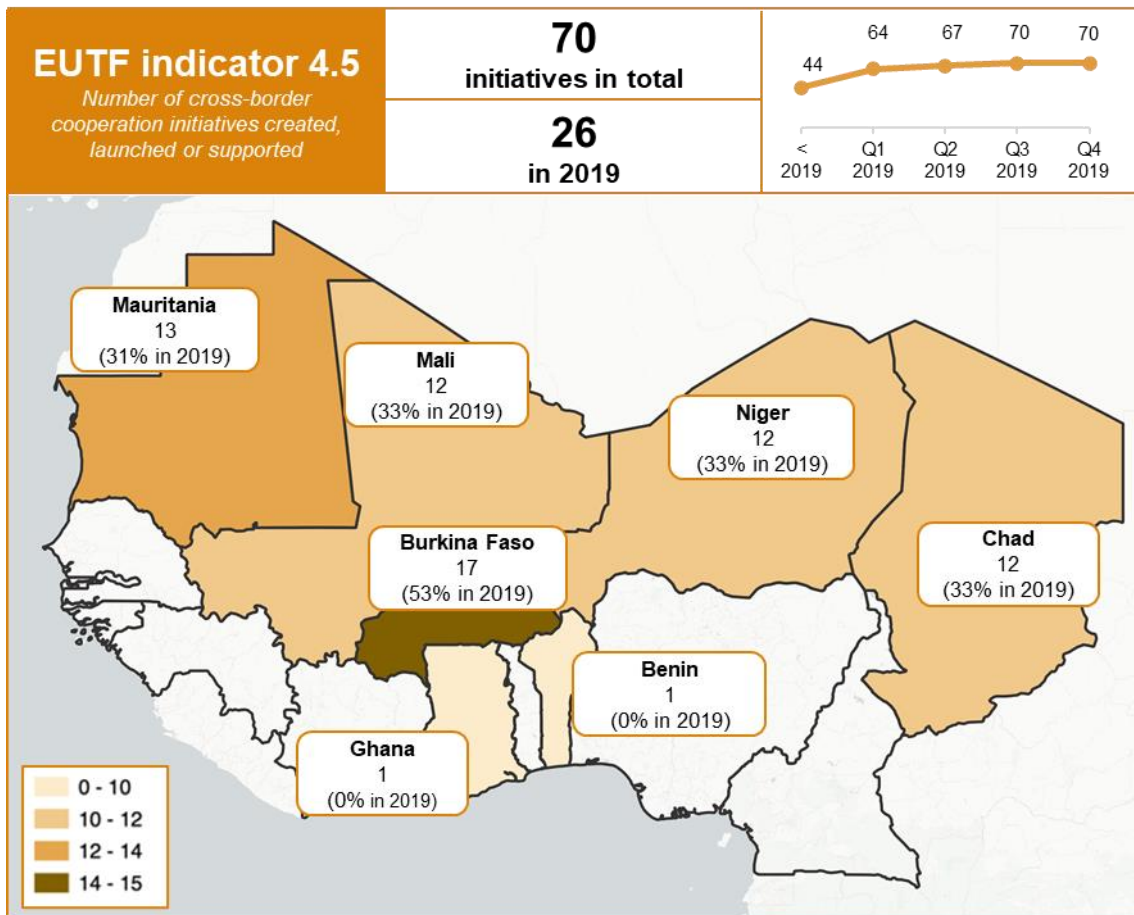


Figure 30: EUTF Indicator 4.5, SLC window, December 2019¹



¹ The map colour code presents data for outputs who can be disaggregated at national level. Exclusions: 2 initiatives developed in 2018.

Figure 31: EUTF Indicator 4.6, SLC window, December 2019¹

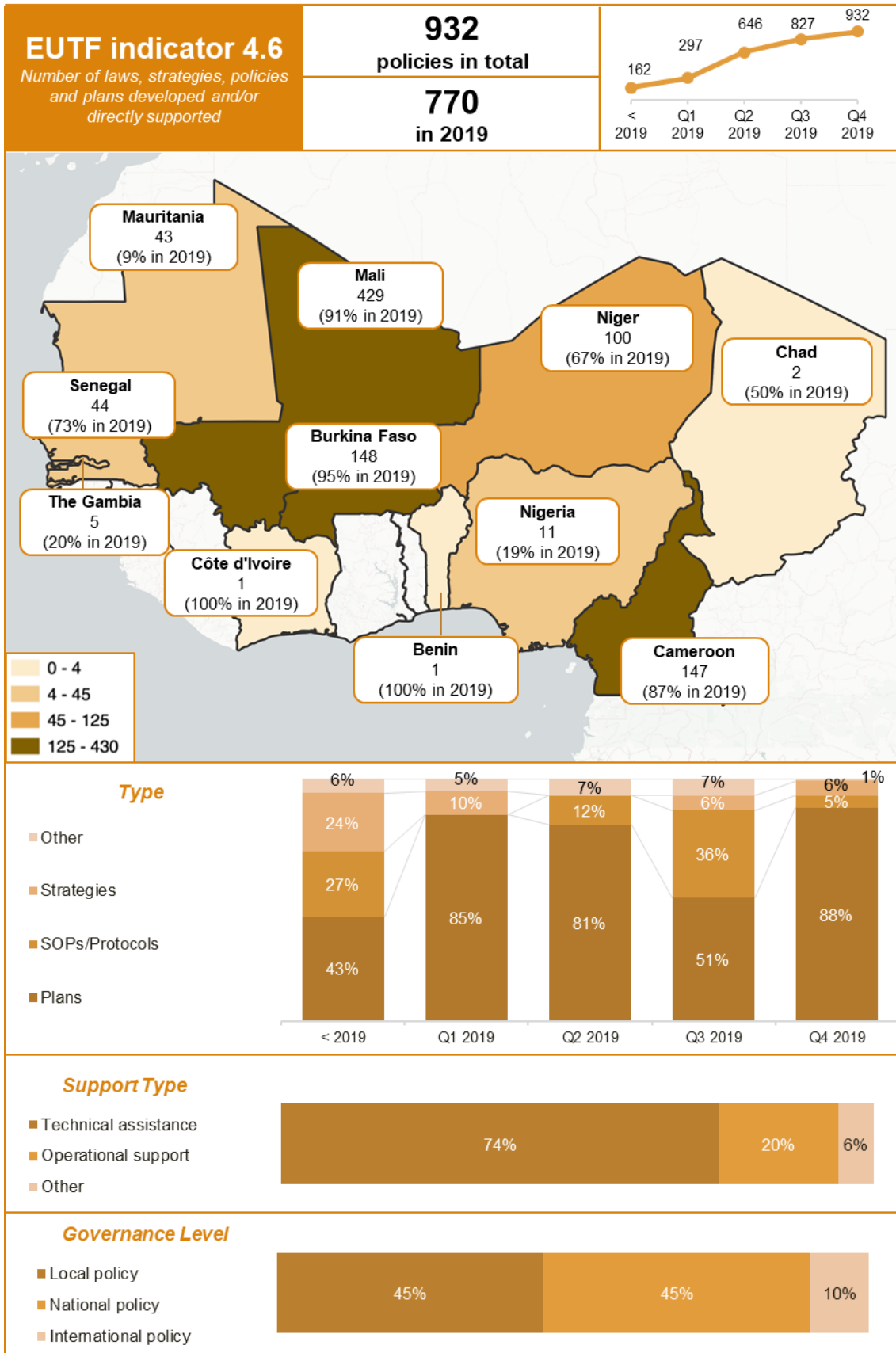
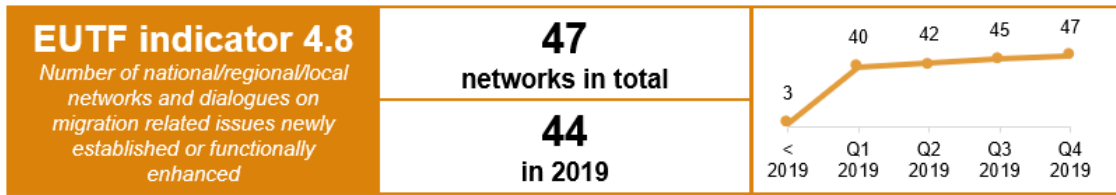


Figure 32: EUTF Indicator 4.8, SLC window, December 2019



¹ The map colour code presents data for outputs who can be disaggregated at national level. Exclusions: 1 policy developed in 2018.

1.3. CHANGES AND CORRECTIONS

1.3.1. STRATEGIC OBJECTIVE 1

Ind	Project	Period	Curr. report	Prev. report	Diff.	Explanation
1.1	A-FIP	2018	0	1,370	-1,370	Correction from IP
		2019-Q1	338	0	338	Correction from IP
		2019-Q2	342	0	342	Correction from IP
		2019-Q3	345	0	345	Correction from IP
	DES - LuxDev	2018	31	0	31	Correction from IP (mapping revision)
		2019-Q1	6	12	-5	Correction from IP (mapping revision)
		2019-Q2	6	34	-28	Correction from IP (mapping revision)
		2019-Q3	4	2	2	Correction from IP (mapping revision)
	Kallo Tchidaniwo	2018	573	124	450	Correction from IP
		2019-Q1	94	4	90	Correction from IP
		2019-Q2	95	0	95	Q2 data for project was not included
		2019-Q3	96	0	96	Q3 data for project was not included
RESILAC	2019-Q1	76	0	76	Correction from IP	
	2019-Q2	76	138	-62	Correction from IP	
	2019-Q3	76	0	76	Correction from IP	
YEP	2019-Q3	1,117	0	1,117	Correction from IP	
1.2	DES - LuxDev	2018	326	0	326	Correction from IP (mapping revision)
		2019-Q1	64	0	64	Correction from IP (mapping revision)
		2019-Q2	65	0	65	Correction from IP (mapping revision)
		2019-Q3	44	0	44	Correction from IP (mapping revision)
	INTEGRA ITC	2019-Q2	133	160	-27	Correction from IP
		2019-Q3	134	161	-27	Correction from IP
	Kallo Tchidaniwo	2018	0	60	-60	Correction from IP
	RESILAC	2019-Q1	5	0	5	Correction from IP
		2019-Q2	5	0	5	Correction from IP
		2019-Q3	5	0	5	Correction from IP
	YEP	2019-Q3	0	85	-85	Correction from IP
	1.3	DES - LuxDev	2018	2,800	1,189	1,612
2019-Q1			554	888	-334	Correction from IP (mapping revision)
2019-Q2			560	2,417	-1,857	Correction from IP (mapping revision)
2019-Q3			382	25	357	Correction from IP (mapping revision)
INTEGRA ITC		2019-Q2	620	1,265	-645	Correction from IP
		2019-Q3	626	1,279	-653	Correction from IP
Kallo Tchidaniwo		2018	0	60	-60	Correction from IP
		2019-Q1	102	0	102	Correction from IP
		2019-Q2	101	0	101	Q2 data for project was not included
RESILAC		2019-Q1	465	0	465	Correction from IP
		2019-Q2	250	183	67	Correction from IP
		2019-Q3	250	0	250	Correction from IP
Shimodu	2019-Q2	0	30	-30	Correction from IP	
	2019-Q3	0	191	-191	Correction from IP	
YEP	2019-Q3	199	116	83	Correction from IP	
1.4	A-FIP	2018	1,877	1,840	37	Correction from IP
		2019-Q1	1,202	2,002	-800	Correction from IP
		2019-Q2	2,299	1,759	540	Correction from IP
		2019-Q3	192	220	-28	Correction from IP
	DES - LuxDev	2018	9,554	5,609	3,946	Correction from IP (mapping revision)
		2019-Q1	1,890	3,507	-1,617	Correction from IP (mapping revision)
		2019-Q2	1,911	9,401	-7,490	Correction from IP (mapping revision)
		2019-Q3	1,302	8,815	-7,513	Correction from IP (mapping revision)
	INTEGRA ITC	2019-Q2	247	264	-17	Correction from IP
		2019-Q3	249	266	-17	Correction from IP
	Kallo Tchidaniwo	2018	3,529	559	2,970	Correction from IP
		2019-Q1	579	457	122	Correction from IP
2019-Q2		585	0	585	Q2 data for project was not included	
2019-Q3		591	0	591	Q3 data for project was not included	
RESILAC	2019-Q1	212	0	212	Correction from IP	
	2019-Q2	212	0	212	Correction from IP	
	2019-Q3	214	0	214	Correction from IP	

SAFIRE GRET	2019-Q1	33	0	33	Project newly included in report
	2019-Q2	96	0	96	Project newly included in report
	2019-Q3	97	0	97	Project newly included in report
Shimodu	2019-Q2	0	34	-34	Correction from IP
	2019-Q3	0	154	-154	Correction from IP
YEP	2019-Q3	219	213	6	Correction from IP

1.3.2. STRATEGIC OBJECTIVE 2

Ind	Project	Period	Curr. report	Prev. report	Diff.	Explanation
2.1	PARERBA - Enabel	2018	1	2	-1	Indicator un-mapping
		2019-Q2	6	19	-13	Indicator un-mapping
	RESILAC	2019-Q1	3	0	3	Correction from IP
		2019-Q2	2	5	-3	Correction from IP
		2019-Q3	2	0	2	Correction from IP
2.1 bis	IOM JI Mali	2018	0	10	-10	Change of indicator, from 2.1bis to 3.6
		2019-Q2	0	16	-16	Change of indicator, from 2.1bis to 3.6
	Kallo Tchidaniwo	2018	1	11	-10	Correction from IP
		2019-Q1	0	15	-15	Correction from IP
	MCN	2019-Q1	0	2	-2	Correction from IP
		2019-Q2	0	1	-1	Correction from IP
		2019-Q3	0	2	-2	Correction from IP
	ProGEM	2018	18	20	-2	Correction from IP
		2019-Q1	11	13	-2	Correction from IP
	Projet du PREFA	2019-Q1	149	494	-345	Correction from IP
	Projet résilience HI	2019-Q1	80	113	-33	Correction from IP, counting methodology
		2019-Q2	36	68	-32	Correction from IP, counting methodology
	Projet résilience Oxfam	2018	316	1,058	-742	Methodological change
		2019-Q1	71	125	-54	Methodological change
		2019-Q2	60	50	10	Methodological change
		2019-Q3	61	34	27	Methodological change
	RESILAC	2019-Q1	8	0	8	Correction from IP
		2019-Q2	9	0	9	Correction from IP
		2019-Q3	10	0	10	Correction from IP
	Shimodu	2019-Q3	2	5	-3	Correction from IP
2.2	Kallo Tchidaniwo	2018	242	338	-96	Correction from IP
		2019-Q1	98	314	-216	Correction from IP
		2019-Q2	172	0	172	Q2 data for project was not included
		2019-Q3	174	0	174	Q3 data for project was not included
	Projet Diakonia	2019-Q2	3,446	563	2,883	Correction from 2.9 to 2.2, counting methodology
	RESILAC	2019-Q1	411	0	411	Correction from IP
		2019-Q2	411	528	-117	Correction from IP
		2019-Q3	411	0	411	Correction from IP
	RESILI(A)NT	2018	104,588	154,507	-49,919	Correction from IP
		2019-Q1	17,655	22,535	-4,880	Correction from IP
		2019-Q2	14,716	19,785	-5,069	Correction from IP
		2019-Q3	11,253	31,935	-20,682	Correction from IP
	Shimodu	2019-Q1	35	523	-488	Correction from IP
		2019-Q2	1,507	67	1,440	Correction from IP
		2019-Q3	3,840	1,225	2,615	Correction from IP
2.3	KEY LVIA	2018	1,703	4,628	-2,925	Methodological change, from 2.3 to 2.7
		2019-Q2	20,612	69,874	-49,262	Methodological change, from 2.3 to 2.7
		2019-Q3	9,678	35,697	-26,019	Methodological change, from 2.3 to 2.7
	Oxfam (RESTE)	2018	18,546	35,662	-17,116	Methodological change, from 2.3 to 2.7
		2019-Q1	0	6,794	-6,794	Methodological change, from 2.3 to 2.7

	2019-Q2	5,339	8,755	-3,416	Methodological change, from 2.3 to 2.7
	2019-Q3	1,692	6,881	-5,189	Methodological change, from 2.3 to 2.7
PRESEC	2018	14,574	33,955	-19,381	Correction from IP
	2019-Q1	4,433	15,518	-11,085	Correction from IP
	2019-Q2	7,989	19,110	-11,121	Correction from IP
	2019-Q3	6,064	15,659	-9,595	Correction from IP
Projet résilience ACF	2018	129,334	141,668	-12,334	Methodological change, from 2.3 to 2.7
	2019-Q1	2,807	11,123	-8,316	Methodological change, from 2.3 to 2.7
	2019-Q2	1,303	5,000	-3,697	Methodological change, from 2.3 to 2.7
Projet résilience HI	2019-Q1	309	374	-65	Methodological change, from 2.3 to 2.7
	2019-Q2	1,983	2,276	-293	Methodological change, from 2.3 to 2.7
	2019-Q3	298	568	-270	Methodological change, from 2.3 to 2.7
Projet résilience LVIA	2018	141,326	186,769	-45,443	Methodological change, from 2.3 to 2.7
	2019-Q1	23,833	39,470	-15,637	Methodological change, from 2.3 to 2.7
	2019-Q2	35,764	76,634	-40,870	Methodological change, from 2.3 to 2.7
	2019-Q3	7,288	11,207	-3,919	Methodological change, from 2.3 to 2.7
Projet résilience Oxfam	2018	6,922	7,372	-450	Methodological change, from 2.3 to 2.7
	2019-Q3	7,257	7,640	-383	Methodological change, from 2.3 to 2.7
Projet résilience TDH	2018	2,703	80,918	-78,215	Methodological change, from 2.3 to 2.7
	2019-Q1	0	18,625	-18,625	Methodological change, from 2.3 to 2.7
	2019-Q2	410	17,496	-17,086	Methodological change, from 2.3 to 2.7
	2019-Q3	1,741	27,754	-26,013	Methodological change, from 2.3 to 2.7
RESILI(A)NT	2018	83,120	40,713	42,407	Methodological change, from 2.3 to 2.7
	2019-Q1	9,863	5,465	4,398	Methodological change, from 2.3 to 2.7
	2019-Q2	27,113	32,528	-5,415	Methodological change, from 2.3 to 2.7
	2019-Q3	31,160	13,914	17,246	Methodological change, from 2.3 to 2.7
RSAN Matam ACTED	2018	3,360	5,358	-1,998	Methodological change, from 2.3 to 2.7
	2019-Q1	0	1,998	-1,998	Methodological change, from 2.3 to 2.7
Shimodu	2019-Q2	967	0	967	Correction from IP
	2019-Q3	868	0	868	Correction from IP
Yellitaare	2018	64,215	84,335	-20,120	Methodological change, from 2.3 to 2.7
	2019-Q1	41,906	41,948	-42	Methodological change, from 2.3 to 2.7
	2019-Q3	64,986	86,029	-21,043	Methodological change, from 2.3 to 2.7
2.4 SAFIRE GRET	2019-Q1	47	0	47	Project newly included in report
	2019-Q2	137	0	137	Project newly included in report
	2019-Q3	139	0	139	Project newly included in report
Shimodu	2019-Q2	0	417	-417	Correction from IP
	2019-Q3	981	422	559	Correction from IP
RESILAC	2019-Q1	12	0	12	Correction from IP
	2019-Q2	13	6	7	Correction from IP
	2019-Q3	15	0	15	Correction from IP
2.7 KEY LVIA	2018	5,867	2,942	2,925	Methodological change, from 2.3 to 2.7
	2019-Q2	51,597	2,335	49,262	Methodological change, from 2.3 to 2.7

	2019-Q3	26,019	0	26,019	Methodological change, from 2.3 to 2.7
Oxfam (RESTE)	2018	21,672	4,556	17,116	Methodological change, from 2.3 to 2.7
	2019-Q1	6,794	0	6,794	Methodological change, from 2.3 to 2.7
	2019-Q2	3,416	0	3,416	Methodological change, from 2.3 to 2.7
	2019-Q3	7,372	2,183	5,189	Methodological change, from 2.3 to 2.7
PAECSIS ENABEL	2018	743	0	743	Project newly included in report
	2019-Q1	85	0	85	Project newly included in report
	2019-Q2	86	0	86	Project newly included in report
	2019-Q3	1,087	0	1,087	Project newly included in report
PRESEC	2018	19,381	0	19,381	Correction from IP
	2019-Q1	11,085	0	11,085	Correction from IP
	2019-Q2	11,121	0	11,121	Correction from IP
	2019-Q3	9,595	0	9,595	Correction from IP
Projet résilience ACF	2018	100,907	88,573	12,334	Methodological change, from 2.3 to 2.7
	2019-Q1	17,847	9,531	8,316	Methodological change, from 2.3 to 2.7
	2019-Q2	18,950	15,253	3,697	Methodological change, from 2.3 to 2.7
Projet résilience HI	2019-Q1	7,558	7,493	65	Methodological change, from 2.3 to 2.7
	2019-Q2	16,450	16,157	293	Methodological change, from 2.3 to 2.7
	2019-Q3	270	0	270	Methodological change, from 2.3 to 2.7
Projet résilience LVIA	2018	45,983	540	45,443	Methodological change, from 2.3 to 2.7
	2019-Q1	15,652	15	15,637	Methodological change, from 2.3 to 2.7
	2019-Q2	40,870	0	40,870	Methodological change, from 2.3 to 2.7
	2019-Q3	3,919	0	3,919	Methodological change, from 2.3 to 2.7
Projet résilience Oxfam	2018	109,603	109,153	450	Methodological change, from 2.3 to 2.7
	2019-Q3	100,906	100,523	383	Methodological change, from 2.3 to 2.7
Projet résilience TDH	2018	81,365	3,150	78,215	Methodological change, from 2.3 to 2.7
	2019-Q1	23,210	4,585	18,625	Methodological change, from 2.3 to 2.7
	2019-Q2	17,236	150	17,086	Methodological change, from 2.3 to 2.7
	2019-Q3	26,013	0	26,013	Methodological change, from 2.3 to 2.7
RESILI(A)NT	2018	23,456	15,944	7,512	Methodological change, from 2.3 to 2.7
	2019-Q1	4,150	3,668	482	Methodological change, from 2.3 to 2.7
	2019-Q2	77,353	66,869	10,484	Methodological change, from 2.3 to 2.7
	2019-Q3	84,194	80,758	3,436	Methodological change, from 2.3 to 2.7
RSAN Matam ACTED	2018	1,998	0	1,998	Methodological change, from 2.3 to 2.7
	2019-Q1	1,998	0	1,998	Methodological change, from 2.3 to 2.7
Shimodu	2019-Q1	917	1,718	-801	Correction from IP
	2019-Q2	917	3,224	-2,306	Correction from IP
	2019-Q3	1,072	0	1,072	Correction from IP
Yellitaare	2018	40,941	20,821	20,120	Methodological change, from 2.3 to 2.7
	2019-Q1	42	0	42	Methodological change, from 2.3 to 2.7
	2019-Q3	25,243	4,200	21,043	Methodological change, from 2.3 to 2.7
2.8 Kallo Tchidaniwo	2018	11	70	-59	Correction from IP
	2019-Q1	2	39	-37	Correction from IP

		2019-Q2	2	0	2	Q2 data for project was not included
		2019-Q3	2	0	2	Q3 data for project was not included
	PARSE	2018	0	361	-361	Correction from IP
	ProGEM	2019-Q1	96	107	-11	Correction from IP
		2019-Q3	88	112	-24	Correction from IP
	RESILAC	2019-Q1	129	0	129	Correction from IP
		2019-Q2	129	90	39	Correction from IP
		2019-Q3	131	0	131	Correction from IP
	SAFIRE GRET	2019-Q2	1	0	1	Project newly included in report
		2019-Q3	1	0	1	Project newly included in report
	Shimodu	2019-Q2	0	15	-15	Correction from IP
	Yellitaare	2019-Q2	735	235	500	Mapping of a previously un-mapped indicator
2.9	Kallo Tchidaniwo	2019-Q1	0	4,923	-4,923	Correction from IP
	Projet Diakonia	2019-Q2	0	2,883	-2,883	Correction from 2.9 to 2.2, counting methodology
	Shimodu	2019-Q3	0	3,031	-3,031	Correction from IP

1.3.3. STRATEGIC OBJECTIVE 3

Ind	Project	Period	Curr. report	Prev. report	Diff.	Explanation	
3.3	DES - Tekki Fii 1	2018	103,918	0	103,918	Mapping of previously un-mapped indicator	
		2019-Q1	264,313	0	264,313	Mapping of previously un-mapped indicator	
		2019-Q2	168,460	0	168,460	Mapping of previously un-mapped indicator	
	IOM JI BF	2018	9,018	8,188	830	Correction from IP (updated IOM document)	
	IOM JI Cameroon	2018	6,489	5,818	671	Correction from IP (updated IOM document)	
		2019-Q1	2,464	2,299	165	Correction from IP (updated IOM document)	
	IOM JI Cote d'Ivoire	2018	12,400	600	11,800	Correction from IP (updated IOM document)	
		2019-Q1	150	200	-50	Correction from IP (updated IOM document)	
	IOM JI Ghana	2018	3,164	3,158	6	Correction from IP (updated IOM document)	
	IOM JI Guinea Bissau	2018	7,285	7,278	7	Correction from IP (updated IOM document)	
		2019-Q1	2,807	2,805	2	Correction from IP (updated IOM document)	
	IOM JI Guinea Conakry	2018	21,155	0	21,155	Correction from IP (updated IOM document)	
	IOM JI Mauritania	2018	6,558	590	5,968	Correction from IP (updated IOM document)	
	IOM JI Niger SURENI	2019-Q1	61,535	53,416	8,119	Correction from IP (updated IOM document)	
	MIGRATION AECID	2019-Q1	18,775	0	18,775	Project newly included in report	
		2019-Q2	28,160	0	28,160	Project newly included in report	
		2019-Q3	28,160	0	28,160	Project newly included in report	
	YEP	2019-Q3	11,180	74,292	-63,112	Correction from IP	
	3.5	DES - LuxDev	2018	194	254	-60	Correction from IP (mapping revision)
			2019-Q1	38	21	17	Correction from IP (mapping revision)
2019-Q2			39	22	16	Correction from IP (mapping revision)	
2019-Q3			26	0	26	Correction from IP (mapping revision)	
IOM JI BF		2018	1,618	1,566	52	Correction from IP (updated IOM document)	
		2019-Q1	162	316	-154	Correction from IP (updated IOM document)	
		2019-Q2	182	180	2	Correction from IP (updated IOM document)	
		2019-Q3	233	230	3	Correction from IP (updated IOM document)	
IOM JI Cameroon		2018	2,624	2,558	66	Correction from IP (updated IOM document)	

		2019-Q1	238	470	-232	Correction from IP (updated IOM document)
		2019-Q2	263	256	7	Correction from IP (updated IOM document)
		2019-Q3	288	277	11	Correction from IP (updated IOM document)
	IOM JI Chad	2019-Q3	12	15	-3	Correction from IP (updated IOM document)
	IOM JI Cote d'Ivoire	2018	3,654	3,664	-10	Correction from IP (updated IOM document)
	IOM JI Gambia	2018	3,716	3,703	13	Correction from IP (updated IOM document)
		2019-Q1	176	322	-146	Correction from IP (updated IOM document)
		2019-Q2	169	150	19	Correction from IP (updated IOM document)
		2019-Q3	246	251	-5	Correction from IP (updated IOM document)
	IOM JI Ghana	2018	942	909	33	Correction from IP (updated IOM document)
		2019-Q1	61	53	8	Correction from IP (updated IOM document)
		2019-Q2	38	53	-15	Correction from IP (updated IOM document)
		2019-Q3	105	104	1	Correction from IP (updated IOM document)
	IOM JI Guinea Conakry	2018	9,235	9,238	-3	Correction from IP (updated IOM document)
		2019-Q1	1,147	2,240	-1,093	Correction from IP (updated IOM document)
	IOM JI Mali	2018	8,847	10,307	-1,460	Correction from IP (updated IOM document)
		2019-Q2	1,240	1,230	10	Correction from IP (updated IOM document)
	IOM JI Mauritania	2018	11	16	-5	Correction from IP (updated IOM document)
		2019-Q1	4	8	-4	Correction from IP (updated IOM document)
	IOM JI Niger SURENI	2019-Q1	521	476	45	Correction from IP (updated IOM document)
		2019-Q2	343	295	48	Correction from IP (updated IOM document)
		2019-Q3	335	443	-108	Correction from IP (updated IOM document)
	IOM JI Nigeria	2018	11,495	11,494	1	Correction from IP (updated IOM document)
	IOM JI Senegal	2019-Q1	223	446	-223	Correction from IP (updated IOM document)
	YEP	2019-Q3	7	0	7	Correction from IP
3.6	AJUSEN Justice	2018	11	1	10	Mapping correction
		2019-Q2	11	1	10	Mapping correction
	IOM JI Mali	2018	10	0	10	Change of indicator, from 2.1bis to 3.6
		2019-Q2	16	0	16	Change of indicator, from 2.1bis to 3.6
	MIGRATION AECID	2018	3	0	3	Project newly included in report
		2019-Q3	19	0	19	Project newly included in report
3.7	MIGRATION AECID	2018	25	0	25	Project newly included in report
3.11	DES - Tekki Fii 1	2018	221	0	221	Mapping of previously un-mapped indicator
		2019-Q1	71	0	71	Mapping of previously un-mapped indicator
		2019-Q2	1	0	1	Mapping of previously un-mapped indicator
	IOM JI BF	2018	20	18	2	Correction from IP (updated IOM document)
	IOM JI Cameroon	2019-Q1	31	29	2	Correction from IP (updated IOM document)
	IOM JI Cote d'Ivoire	2018	10	8	2	Correction from IP (updated IOM document)
	IOM JI Guinea Conakry	2018	672	2	670	Correction from IP (updated IOM document)
	IOM JI Mauritania	2018	13	9	4	Correction from IP (updated IOM document)

IOM JI Niger SURENI	2019-Q1	1,173	1,044	129	Correction from IP (updated IOM document)
---------------------	---------	-------	-------	-----	---

1.3.4. STRATEGIC OBJECTIVE 4

Ind	Project	Period	Curr. report	Prev. report	Diff.	Explanation
4.2	AJUSEN Justice	2018	357	352	5	Mapping correction
		2019-Q2	90	85	5	Mapping correction
	GAR-SI Mauritania	2019-Q2	40	132	-92	Correction to avoid double counting
	PAECSIS ENABEL	2018	55	0	55	Project newly included in report
	RESILAC	2019-Q1	534	0	534	Correction from IP
		2019-Q2	533	0	533	Correction from IP
		2019-Q3	534	0	534	Correction from IP
	SECGEF	2019-Q1	20	0	20	Project newly included in report
		2019-Q2	20	0	20	Project newly included in report
		2019-Q3	20	0	20	Project newly included in report
	RESILAC	2019-Q1	26	0	26	Correction from IP
		2019-Q2	26	0	26	Correction from IP
		2019-Q3	28	0	28	Correction from IP
	SECGEF	2019-Q1	1	0	1	Project newly included in report
		2019-Q2	1	0	1	Project newly included in report
		2019-Q3	1	0	1	Project newly included in report
	ProGEF	2019-Q1	2	0	2	Correction from IP
4.3	La Voix des Jeunes II	2019-Q2	23	25	-2	Correction from IP
	RESILAC	2019-Q1	850	0	850	Correction from IP
		2019-Q2	290	870	-580	Correction from IP
		2019-Q3	290	0	290	Correction from IP
4.5	La Voix des Jeunes II	2019-Q2	0	8	-8	Correction from IP
		2019-Q3	0	15	-15	Correction from IP
4.6	PAECSIS ENABEL	2018	1	0	1	Project newly included in report
		2019-Q3	3	0	3	Project newly included in report
	RESILAC	2019-Q3	2	0	2	Correction from IP

1.3.5. CROSS-CUTTING INDICATORS

Ind	Project	Period	Curr. report	Prev. report	Diff.	Explanation
5.1	INTEGRA ITC	2019-Q2	4	0	3	Correction from IP
		2019-Q3	4	1	4	Correction from IP
	Pôles ruraux	2019-Q3	1	0	1	Mapping correction
	INTEGRA ITC	2019-Q2	4	0	3	Correction from IP
		2019-Q3	4	1	4	Correction from IP
	Kallo Tchidaniwo	2018	5	30	-25	Correction from IP
		2019-Q1	1	0	1	Correction from IP
		2019-Q2	1	0	1	Q2 data for project was not included
		2019-Q3	1	0	1	Q3 data for project was not included
	MIGRATION AECID	2018	2	0	2	Project newly included in report
	PAECSIS ENABEL	2019-Q1	1	0	1	Project newly included in report
		2019-Q2	5	0	5	Project newly included in report
		2019-Q3	7	0	7	Project newly included in report
	RESILAC	2019-Q1	1	0	1	Correction from IP
		2019-Q2	0	9	-9	Correction from IP
	Shimodu	2019-Q1	4	0	4	Correction from IP
	DES - LuxDev	2018	2	1	1	Correction from IP (mapping revision)
		2019-Q3	0	1	-1	Correction from IP (mapping revision)
	INTEGRA ITC	2019-Q2	4	0	3	Correction from IP
		2019-Q3	4	1	4	Correction from IP
	RESILAC	2019-Q1	3	0	3	Correction from IP
		2019-Q2	0	1	-1	Correction from IP
	SAFIRE GRET	2019-Q1	2	0	2	Project newly included in report
		2019-Q2	5	0	5	Project newly included in report
		2019-Q3	6	0	6	Project newly included in report

1.4. NEW PROJECTS IN THE REPORT

1.4.1. REGIONAL

GAR-SI Chad

The project *Groupes d'Action Rapides – Surveillance et Intervention au Sahel – Chad* (GAR-SI Chad) is the Chadian component of the GAR-SI programme, active in the five G5 Sahel countries and Senegal. Through the progressive creation, training, dotation and mentoring of national gendarmerie units (composed of 120 to 140 persons), it specifically aims at 1) increasing the capabilities of national security forces, in terms of intervention and prevention; and 2) improving conditions for cross-border and regional cooperation across targeted countries.

Table 1: GAR-SI Chad (project)

Key facts and figures	
Full project name	<i>GAR-SI SAHEL (Groupes d'Action Rapides – Surveillance et Intervention au Sahel) - Tchad</i>
Short project name	GAR-SI Chad
Location(s) of implementation	Chad (national)
EUTF budget	€6,300,499
Main IP(s)	FIIAPP
Start date	March 2019
End date	October 2020

1.4.2. BURKINA FASO

TUUMA

The project TUUMA is implemented in several provinces in the north of Burkina Faso, particularly in the border region with Mali, a particularly sensitive area in socio-economic, political and security terms. It aims to improve economic opportunities, and targets young people aged between 15 and 34 and women. More specifically, the project aims to strengthen entrepreneurship and technical skills of the targeted groups in order to develop income-generating activities and job creation in rural areas.

Table 2: TUUMA (project)

Key facts and figures	
Full project name	<i>TUUMA - Appui à la compétence professionnelle, l'entrepreneuriat et l'emploi des jeunes et des femmes dans les régions rurales du Burkina Faso</i>
Short project name	TUUMA
Location(s) of implementation	Burkina Faso (Cascades, Hauts Bassins, Boucle du Mouhoun, North, Sahel)
EUTF budget	€8,000,000
Main IP(s)	ADA

Start date	January 2018
End date	June 2021

PEV Renforcement de l'Etat sur le fait religieux

This project aims to strengthen the system for monitoring religious dynamics involving local stakeholders, authorities, local elected representatives, religious leaders and the faith-based media. The aim is to prepare for the establishment and development of a system of monitoring of religious events which involves the local actors mentioned above by strengthening their capacities and inter-religious dialogue.

Table 3: PEV *Renf. de l'Etat sur le fait religieux* (project)

Key facts and figures	
Full project name	<i>Renforcement de l'Etat sur le fait religieux</i>
Short project name	<i>PEV Renf. de l'Etat sur le fait religieux</i>
Location(s) of implementation	Burkina Faso (Boucle du Mouhoun, North, Sahel)
EUTF budget	€140,000
Main IP(s)	DGLPAP
Start date	October 2018
End date	October 2020

PEV MLAL Ensemble pour le dialogue

The project is a pilot action to prevent and combat violent extremism by promoting and strengthening social cohesion in the north of Burkina Faso through the promotion of dialogue. More specifically, it aims to strengthen intra/inter-religious and community dialogue, and increase the responsibility of civil society, state services and political parties in the Hauts Bassins Region and in the cities of Bobo-Dioulasso and Ouagadougou for reinvigorated social cohesion.

Table 4: PEV MLAL *Ensemble pour le dialogue* (project)

Key facts and figures	
Full project name	<i>Progettomondo MLAL Ensemble Pour Le Dialogue! Prévention De L'Extrémisme Violent Autochtone À Travers La Promotion Du Dialogue Interreligieux Et Intercommunautaire, De La Base Aux Institutions Publiques</i>
Short project name	<i>PEV MLAL Ensemble pour le dialogue</i>
Location(s) of implementation	Burkina Faso (Hauts-Bassins, Centre)
EUTF budget	€140,000
Main IP(s)	DGLPAP
Start date	January 2018
End date	June 2021

PEV SEMFILM

The general objective of the project is to stimulate social cohesion and encourage promotion of inter- and intra-community and religious dialogue in the eastern region of Burkina Faso. More specifically, the

project has four objectives, to: (1) favour listening and free expression of communities, particularly of young people in the region; (2) raise awareness on social cohesion, through messages of tolerance and living together; (3) create permanent frameworks for the population groups and the public authorities to exchange more easily and; (4) reinforce the capacities of young people to perpetuate the actions undertaken.

Table 5: PEV SEMFILM (project)

Key facts and figures	
Full project name	<i>Projet d'accompagnement des consortia dans le cadre de la mise en œuvre du programme FFU-PEV</i>
Short project name	<i>PEV SEMFILM</i>
Location(s) of implementation	Burkina Faso (Est)
EUTF budget	€140,000
Main IP(s)	DGLPAP
Start date	March 2019
End date	June 2021

1.4.3. CHAD

DIZA Zone Est

The DIZA *Est* project is a €7 million project implemented by Concern Worldwide. The general objective of DIZA *Est* is to promote inclusive economic and social development in three border regions in the eastern part of Chad (Sila, Salamat, Ouaddaï), where many refugees are present as a consequence of neighbour countries' past and ongoing conflicts. Concretely, the project aims at enhancing the provision of basic services for refugees, displaced persons and host communities through increased access to education, water and health services. Vocational training in cooperation with regional and local authorities is also implemented in order to facilitate the socio-economic integration of fragile people and to maximise economic opportunities. Lastly, the project favours local dialogue between different communities.

Table 6: DIZA *Zone Est* (project)

Key facts and figures	
Full project name	DIZA <i>Zone Est</i>
Short project name	DIZA <i>Est</i>
Location(s) of implementation	Sila, Salamat, Ouaddaï
EUTF budget	€7,000,000
Main IP(s)	Concern
Start date	January 2019
End date	January 2022

Sensibilisation WASH (RESTE)

The project *Sensibilisation WASH (RESTE)* is a €1,199,402 project implemented by Oxfam as part of the wider RESTE program. It has two main goals: (1) sensitizing populations over management of hydraulic pieces, and (2) identifying people able to repair drills and wells. These two goals overlap with two EUTF indicators, to which the project contributes: number of staff from local authorities and basic

service providers benefiting from capacity building to strengthen service delivery (indicator 2.8) and number of multi-stakeholder groups and learning mechanisms formed and regularly gathering (indicator 5.1).

Table 7: *Sensibilisation WASH (RESTE) (project)*

Key facts and figures	
Full project name	<i>Campagne de sensibilisation WASH et de mise en place d'une méthodologie de sensibilisation adaptée à l'utilisation rationnelle des latrines communautaires</i>
Short project name	Sensibilisation WASH (RESTE)
Location(s) of implementation	Lac, Hadjer Jamis
EUTF budget	€1,199,402
Main IP(s)	Oxfam
Start date	March 2019
End date	June 2021

Sécurité et Gestion des Frontières (SECGEF)

The project SECGEF is a €10 million budget support directly supporting the Chadian government. It has three main goals: (1) increase security, (2) enhance the capabilities of public administration regarding the rule of law, and (3) improve border management. Its concrete actions include providing support to state institutions dealing with security and protection of civilians, training individuals from the Chadian security forces and constructing border stations.

Table 8: SECGEF (project)

Key facts and figures	
Full project name	<i>Sécurité et gestion des frontières</i>
Short project name	SECGEF
Location(s) of implementation	national
EUTF budget	€10,000,000
Main IP(s)	Budget support
Start date	January 2019
End date	December 2019

1.4.4. MALI

Migration AECID

The *Projet d'information et de sensibilisation sur les risques et dangers de la migration irrégulière et de promotion de la libre circulation dans l'espace CEDEAO* is a €3.2M project implemented by AECID in Mali. The project is implemented in the regions of origin of Kayes and Sikasso and in the Bamako district. The project aims first to support information campaigns on the risks of irregular migration, through capacity building of the MMEIA¹ as well as direct sensitisation activities. Second, the project

¹ *Ministère des Maliens de l'Extérieur et de l'Intégration Africaine* i.e. Ministry for Malians abroad and for African integration.

aims to improve knowledge of free movement laws within ECOWAS both among the population and by training relevant stakeholders (local communities, security agents, and transportation actors).

Table 9: Migration AECID (project)

Key facts and figures	
Full project name	<i>Projet d'information et de sensibilisation sur les risques et dangers de la migration irrégulière et de promotion de la libre circulation dans l'espace CEDEAO</i>
Short project name	Migration AECID
Location(s) of implementation	Bamako district, Kayes, Sikasso
EUTF budget	€3,200,000
Main IP(s)	AECID
Start date	February 2018
End date	January 2021

PAECSIS ENABEL

The *Programme d'appui au fonctionnement de l'état civil au Mali: appui à la mise en place d'un système d'information sécurisé - Enabel* is the €17M component of the PAECSIS programme, implemented by Enabel (the other component is implemented by Civipol). The project aims to reinforce civil registration at the national and local level, through training of all stakeholders and support to the development of texts and plans for the improvement of civil registration services. The project also conducts sensitisation activities aimed at the population on the importance of civil registration.

Table 10: PAECSIS Enabel (project)

Key facts and figures	
Full project name	<i>Programme d'appui au fonctionnement de l'état civil au Mali: appui à la mise en place d'un système d'information sécurisé - Enabel</i>
Short project name	PAECSIS Enabel
Location(s) of implementation	Mali (national)
EUTF budget	€17,000,000
Main IP(s)	Enabel
Start date	November 2017
End date	November 2021

1.4.5. MAURITANIA

Three additional projects have been included in the MLS report in Mauritania. The projects described below are all part of the €10M *Programme de renforcement de la résilience des communautés urbaines et rurales vulnérables en Mauritanie (SAFIRE)*. Its three components (projects) are:

- *Résilience Communautaire et Institutionnelle pour l'Insertion Economique et Sociale des Jeunes et des Femmes à Nouakchott, au Hodh El Chargui et Hodh El Gharbi, en Mauritanie (SAFIRE Oxfam)*
- *Renforcer les populations vulnérables par l'insertion professionnelle, le développement agropastoral et para-agricole et l'amélioration à la résilience face à l'insécurité alimentaire et au changement climatique (SAFIRE CRF)*

- *Projet d'appui à l'inclusion économique et sociale pour la stabilité et l'emploi des jeunes en Mauritanie – PIESSE (SAFIRE PIESSE – GRET)*

SAFIRE OXFAM

SAFIRE Oxfam is a €4M project implemented by Oxfam in Nouakchott and the eastern Hodh El Gharbi and Hodh ech Chargui regions of Mauritania. The project aims to reinforce urban-rural linkages through a twofold action: first, it provides economic opportunities to women and youth through job creation and IGAs, mostly in the agricultural sector; second, it aims to strengthen resilience against food insecurity and malnutrition through trainings and enhanced seed distribution.

Table 11: SAFIRE Oxfam (project)

Key facts and figures	
Full project name	<i>Résilience Communautaire et Institutionnelle pour l'Insertion Economique et Sociale des Jeunes et des Femmes à Nouakchott, au Hodh El Chargui et Hodh El Gharbi, en Mauritanie (SAFIRE Oxfam)</i>
Short project name	SAFIRE Oxfam
Location(s) of implementation	Hodh El Gharbi, Hodh ech Chargui, Nouakchott
EUTF budget	€4,000,000
Main IP(s)	Oxfam
Start date	February 2019
End date	February 2023

SAFIRE CRF

SAFIRE CRF is a €3M project implemented by the French Red Cross (CRF) in Nouakchott and the southern regions of Gorgol and Guidimaka. Like the SAFIRE Oxfam project, it aims to reinforce urban-rural linkages by strengthening vulnerable populations' resilience to food insecurity and malnutrition through trainings and enhanced food production, as well as creating employment opportunities in the agricultural sector. It also organises agro-cultural activities to inform Mauritians on resilience practices.

Table 12: SAFIRE CRF (project)

Key facts and figures	
Full project name	<i>Renforcer les populations vulnérables par l'insertion professionnelle, le développement agropastoral et para-agricole et l'amélioration à la résilience face à l'insécurité alimentaire et au changement climatique (SAFIRE CRF)</i>
Short project name	SAFIRE CRF
Location(s) of implementation	Gorgol, Guidimaka, Nouakchott
EUTF budget	€3,000,000
Main IP(s)	French Red Cross (CRF)
Start date	Mars 2019
End date	February 2023

SAFIRE GRET

SAFIRE GRET is a €3M project implemented by GRET in Brakna, Trarza, Gorgol, and Nouakchott. Like the two other aforementioned SAFIRE projects, it aims to reinforce urban-rural linkages through job creation, IGAs and vocational training in the sector of the green economy and participation to *chantiers-écoles paysans* or on-the-job training on field farms.

Table 13: SAFIRE GRET (project)

Key facts and figures	
Full project name	<i>Projet d'appui à l'inclusion économique et sociale pour la stabilité et l'emploi des jeunes en Mauritanie- PIESSSE (SAFIRE PIESSSE - GRET)</i>
Short project name	SAFIRE GRET
Location(s) of implementation	Brakna, Nouakchott
EUTF budget	€3,000,000
Main IP(s)	GRET
Start date	February 2019
End date	February 2023

1.4.6. NIGER

An additional project has been included in this MLS report in Niger. The project, described below, is part of the €30M programme *Création d'emplois et d'opportunités économiques à travers une gestion durable de l'environnement dans les zones de transit et départ au Niger*. The programme has three components (projects) :

- *Les jeunes entreprennent et s'emploient au Niger* (JEEN) described below,
- *Programme de création d'emplois et d'opportunités économiques à travers une gestion durable de l'environnement dans les zones de départ et de transit du Niger* (DURAZINDER), implemented by Enabel and,
- *Durabilité de l'Environnement et Stabilisation Economique sur la Route de Transit* (D.E.S.E.R.T) implemented by AICS.

JEEN

Les jeunes entreprennent et s'emploient au Niger (JEEN) is a €8.865M project implemented by SNV World in the Tahoua and Zinder regions of Niger. The project aims to provide economic opportunities to young Nigeriens, including returnees, as an alternative to irregular migration. The project supports the training of youth both on entrepreneurship skills and technical capacities in the agribusiness sector. The project will also support access to arable land for the trained youth and the establishment of a sound financial investment sector to support agribusiness opportunities for the youth.

Table 14: JEEN (project)

Key facts and figures	
Full project name	<i>Les Jeunes entreprennent et s'emploient au Niger</i>
Short project name	JEEN
Location(s) of implementation	Tahoua, Zinder
EUTF budget	€8,865,000

Main IP(s)

Start date

End date

SNV World

December 2018

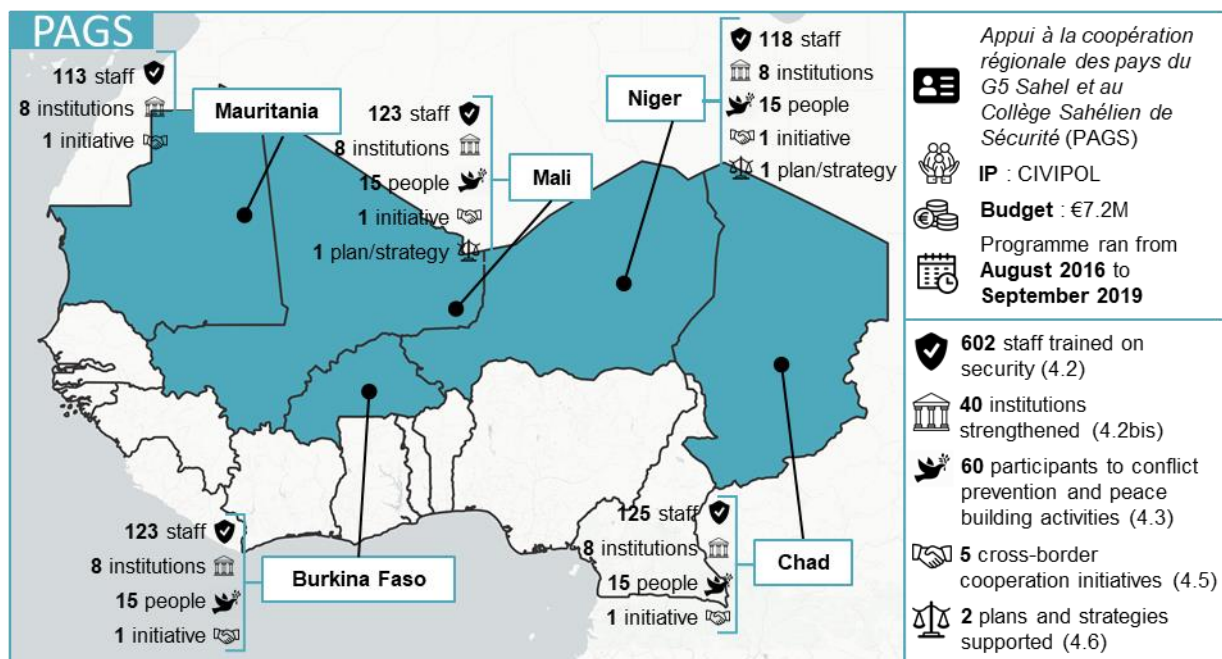
December 2021

1.5. COMPLETED PROGRAMMES IN 2019

1.5.1. REGIONAL

PAGS

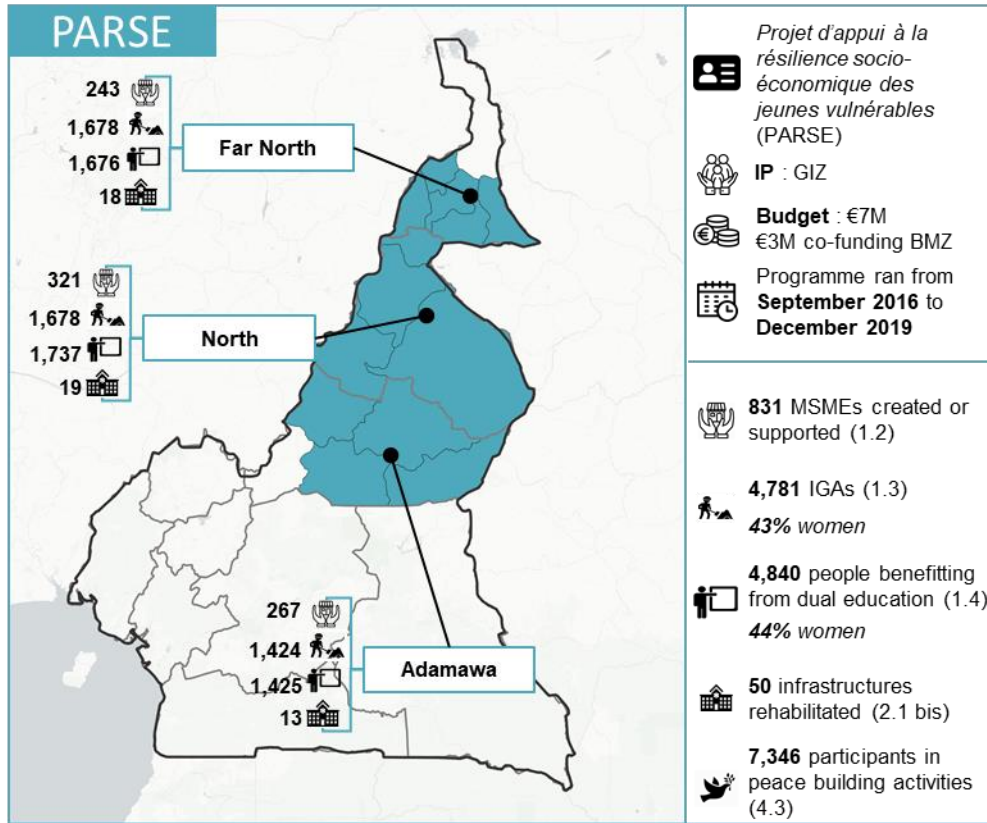
Figure 33: PAGS Programme – Key facts and outputs dashboard



1.5.2. CAMEROON

PARSE

Figure 34: PARSE Programme – Key facts and outputs dashboard^{1,2}



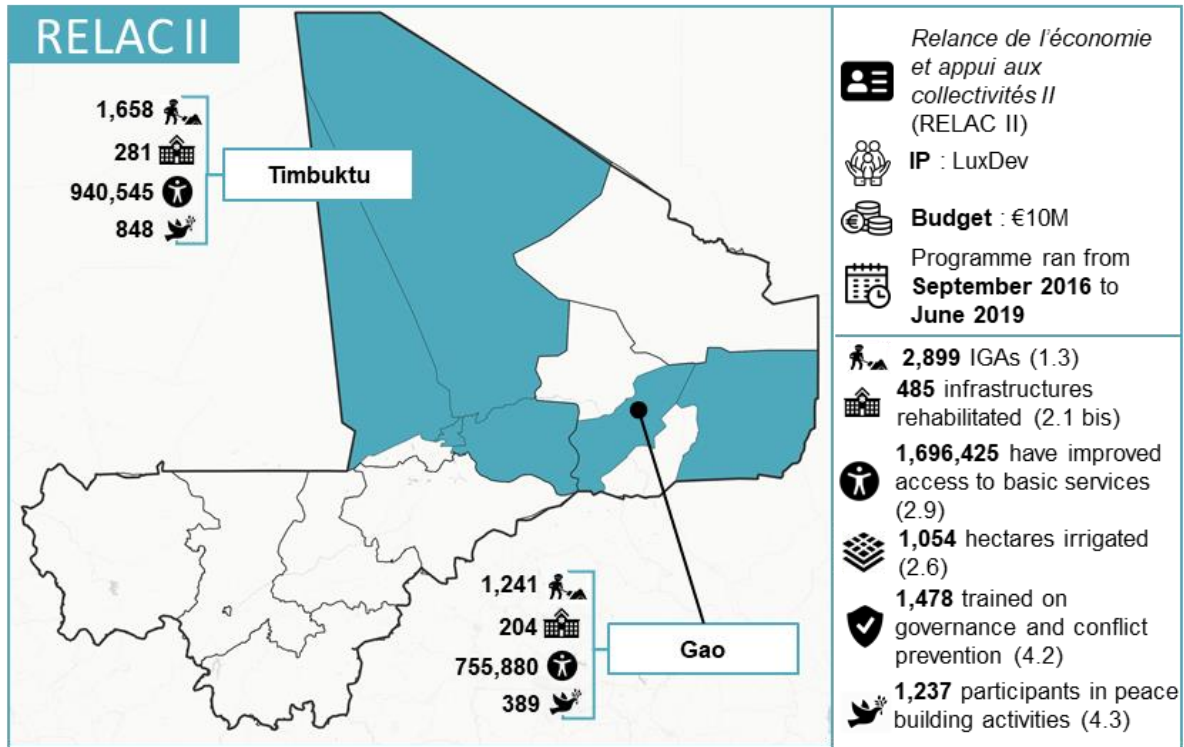
¹ The PARSE programme has also provided output data for indicator 1.1: Number of jobs created, which are not presented here.

² In Q4 2019, one beneficiary of IGA (1.3) and two beneficiaries of TVET (1.4) were reported by the programme that are not represented on the map.

1.5.3. MALI

RELAC II

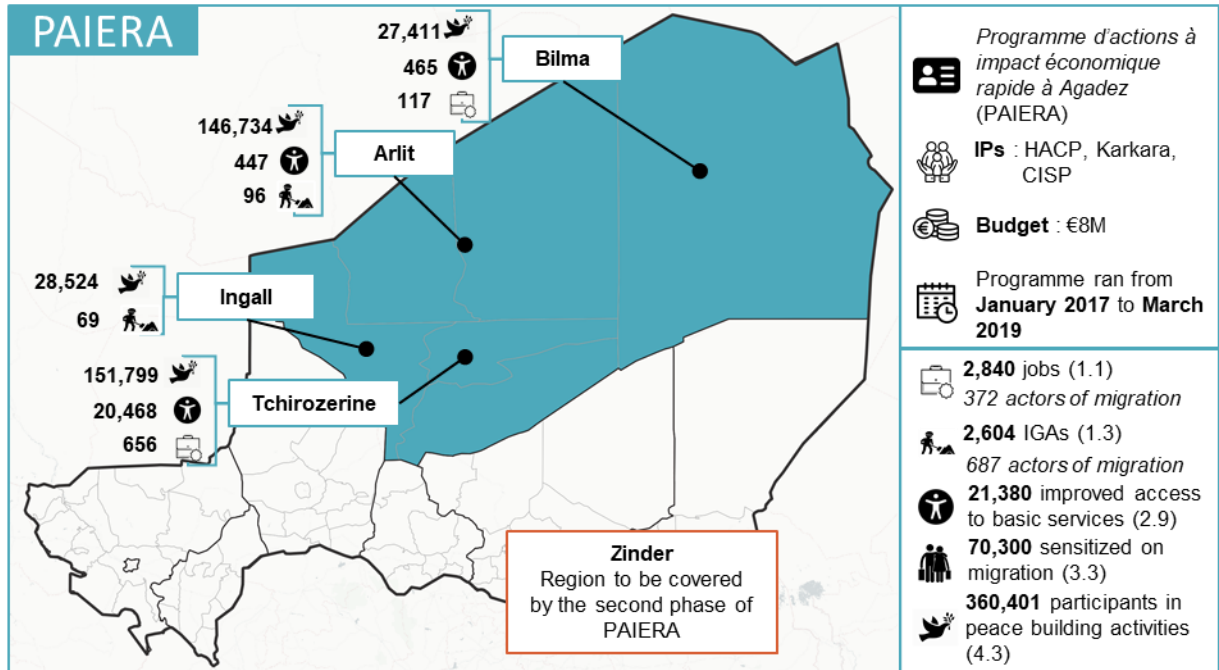
Figure 35: RELAC II programme – Key facts and outputs dashboard



1.5.4. NIGER

PAIERA

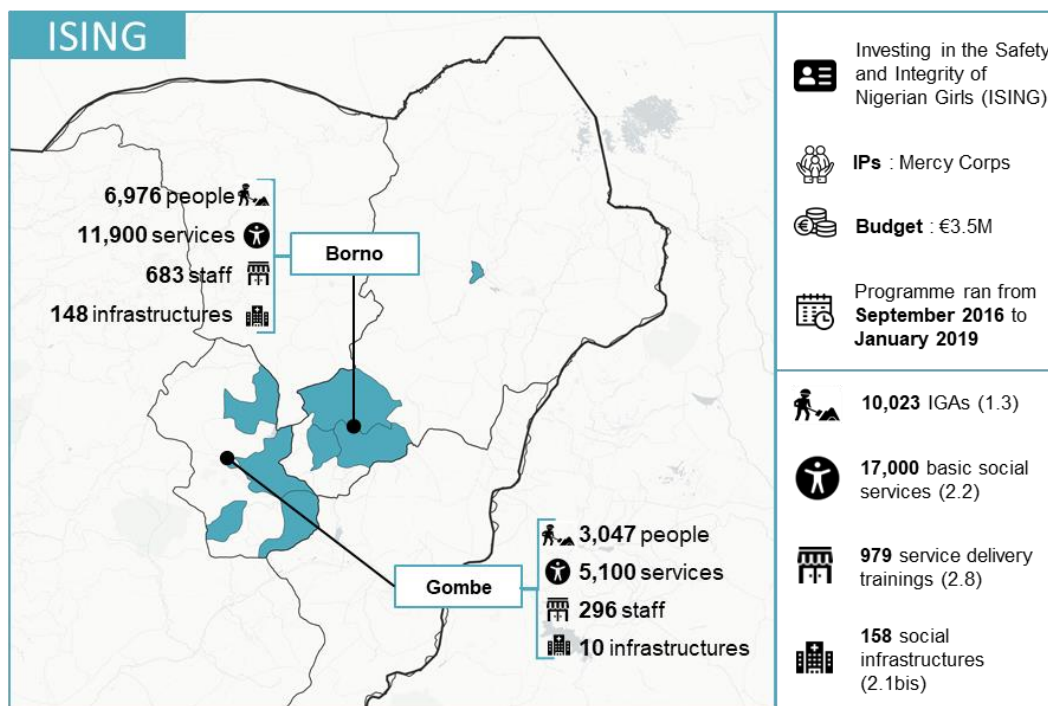
Figure 36: PAIERA programme – Key facts and outputs dashboard



1.5.5. NIGERIA

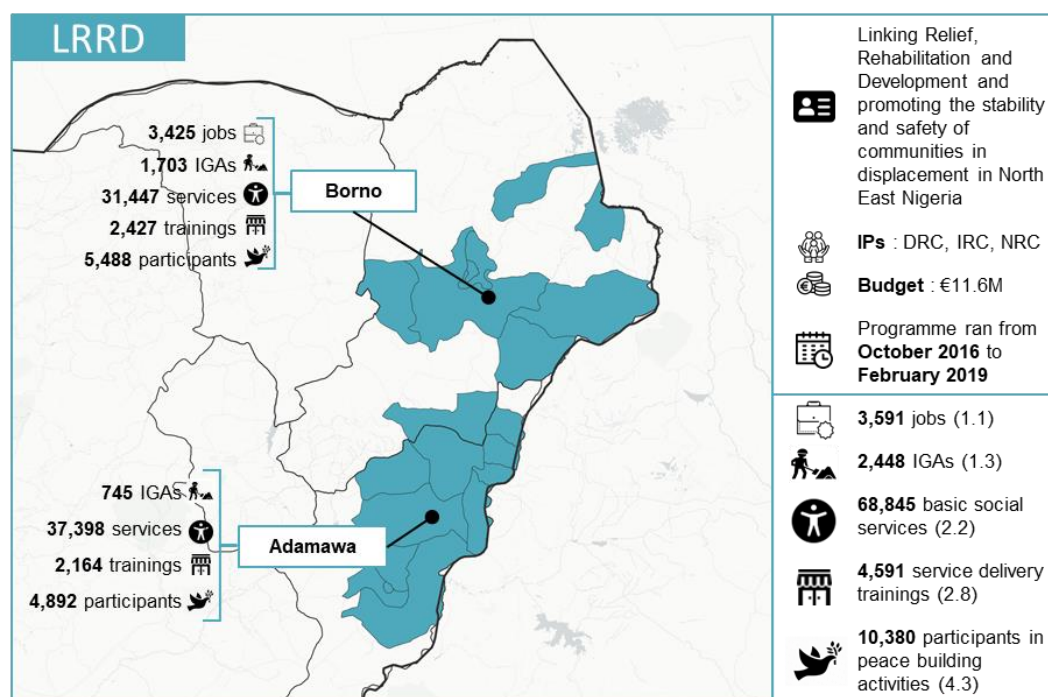
ISING

Figure 37: ISING programme – Key facts and outputs dashboard



LRRD

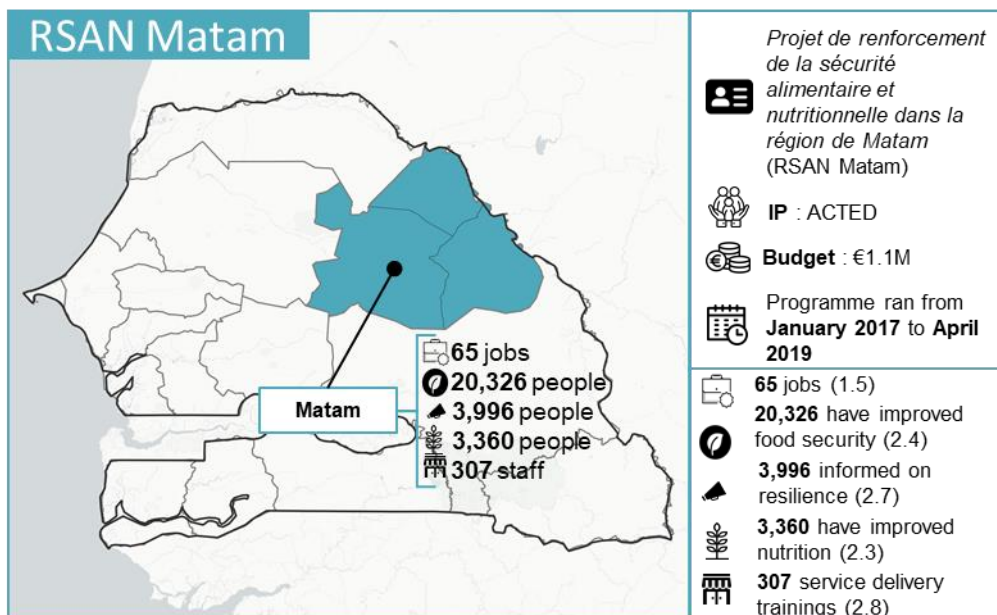
Figure 38: LRRD programme – Key facts and outputs dashboard



1.5.6. SENEGAL

RSAN Matam

Figure 39: RSAN Matam programme – Key facts and outputs dashboard



2. INDEX

2.1. TABLES

Table 1: GAR-SI Chad (project)	41
Table 2: TUUMA (project)	41
Table 3: PEV <i>Renf. de l'Etat sur le fait religieux</i> (project)	42
Table 4: PEV MLAL <i>Ensemble pour le dialogue</i> (project)	42
Table 5: PEV SEMFILM (project)	43
Table 6: DIZA <i>Zone Est</i> (project)	43
Table 7: <i>Sensibilisation WASH (RESTE)</i> (project)	44
Table 8: SECGEF (project)	44
Table 9: Migration AECID (project)	45
Table 10: PAECSIS Enabel (project)	45
Table 11: SAFIRE Oxfam (project)	46
Table 12: SAFIRE CRF (project)	46
Table 13: SAFIRE GRET (project)	47
Table 14: JEEN (project)	47

2.2. FIGURES

Figure 1: EUTF Indicator 1.1, SLC window, December 2019	6
Figure 2: EUTF Indicator 1.2, SLC window, December 2019	7
Figure 3: EUTF Indicator 1.3, SLC window, December 2019	8
Figure 4: EUTF Indicator 1.4, SLC window, December 2019	9
Figure 5: EUTF Indicator 1.5, SLC window, December 2019	10
Figure 6: EUTF Indicator 1.6, SLC window, December 2019	11
Figure 7: EUTF Indicator 2.1, SLC window, December 2019	12
Figure 8: EUTF Indicator 2.1 bis, SLC window, December 2019	12
Figure 9: EUTF Indicator 2.2, SLC window, December 2019	13
Figure 10: EUTF Indicator 2.3, SLC window, December 2019	14
Figure 11: EUTF Indicator 2.4, SLC window, December 2019	15
Figure 12: EUTF Indicator 2.5, SLC window, December 2019	15
Figure 13: EUTF Indicator 2.6, SLC window, December 2019	16
Figure 14: EUTF Indicator 2.7, SLC window, December 2019	17
Figure 15: EUTF Indicator 2.8, SLC window, December 2019	18
Figure 16: EUTF Indicator 2.9, SLC window, December 2019	19
Figure 17: EUTF Indicator 3.1, SLC window, December 2019	20
Figure 18: EUTF Indicator 3.2, SLC window, December 2019	20
Figure 19: EUTF Indicator 3.3, SLC window, December 2019	21
Figure 20: EUTF Indicator 3.4, SLC window, December 2019	22
Figure 21: EUTF Indicator 3.5, SLC window, December 2019	23
Figure 22: EUTF Indicator 3.6, SLC window, December 2019	24

Figure 23: EUTF Indicator 3.7, SLC window, December 2019.....	25
Figure 24: EUTF Indicator 3.8, SLC window, December 2019.....	26
Figure 25: EUTF Indicator 3.10, SLC window, December 2019.....	26
Figure 26: EUTF Indicator 4.1, SLC window, December 2019.....	27
Figure 27: EUTF Indicator 4.2, SLC window, December 2019.....	28
Figure 28: EUTF Indicator 4.2 bis, SLC window, December 2019	29
Figure 29: EUTF Indicator 4.3, SLC window, December 2019.....	30
Figure 30: EUTF Indicator 4.5, SLC window, December 2019.....	31
Figure 31: EUTF Indicator 4.6, SLC window, December 2019.....	32
Figure 32: EUTF Indicator 4.8, SLC window, December 2019.....	33
Figure 33: PAGES Programme – Key facts and outputs dashboard	48
Figure 34: PARSE Programme – Key facts and outputs dashboard	49
Figure 35: RELAC II programme – Key facts and outputs dashboard	50
Figure 36: PAIERA programme – Key facts and outputs dashboard	51
Figure 37: ISING programme – Key facts and outputs dashboard.....	52
Figure 38: LRRD programme – Key facts and outputs dashboard.....	52
Figure 39: RSAN Matam programme – Key facts and outputs dashboard	53