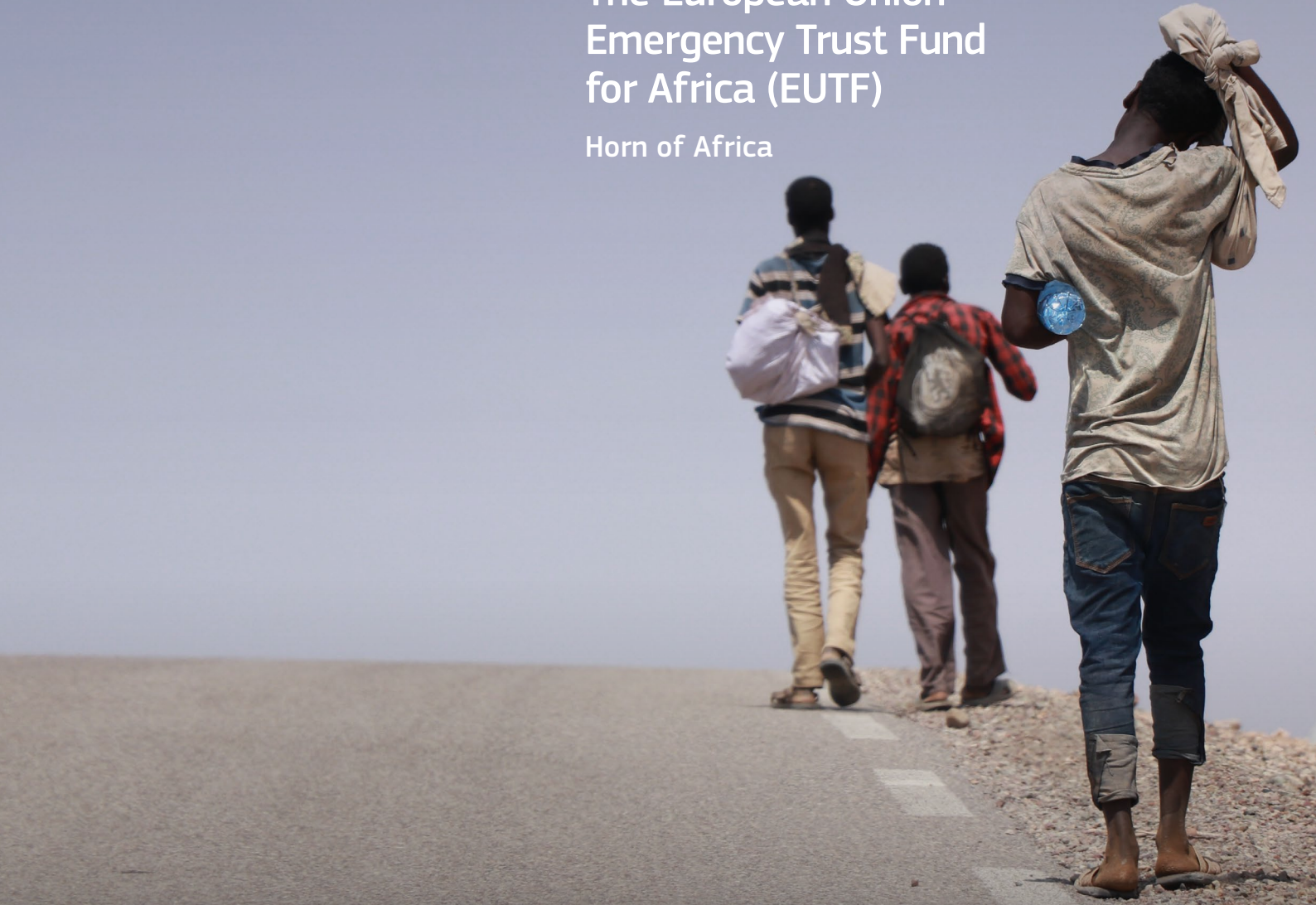




The European Union Emergency Trust Fund for Africa (EUTF)

Horn of Africa



**Improved migration management
in countries of origin, transit
and destination**

**Strategic Objective 3 (SO3)
output indicators as of June 2023**





S03: Improved migration management in countries of origin, transit and destination

Key EUTF S03 output indicators as of June 2023



198,826
Migrants, refugees or IDPs protected or assisted (EUTF 3.2)

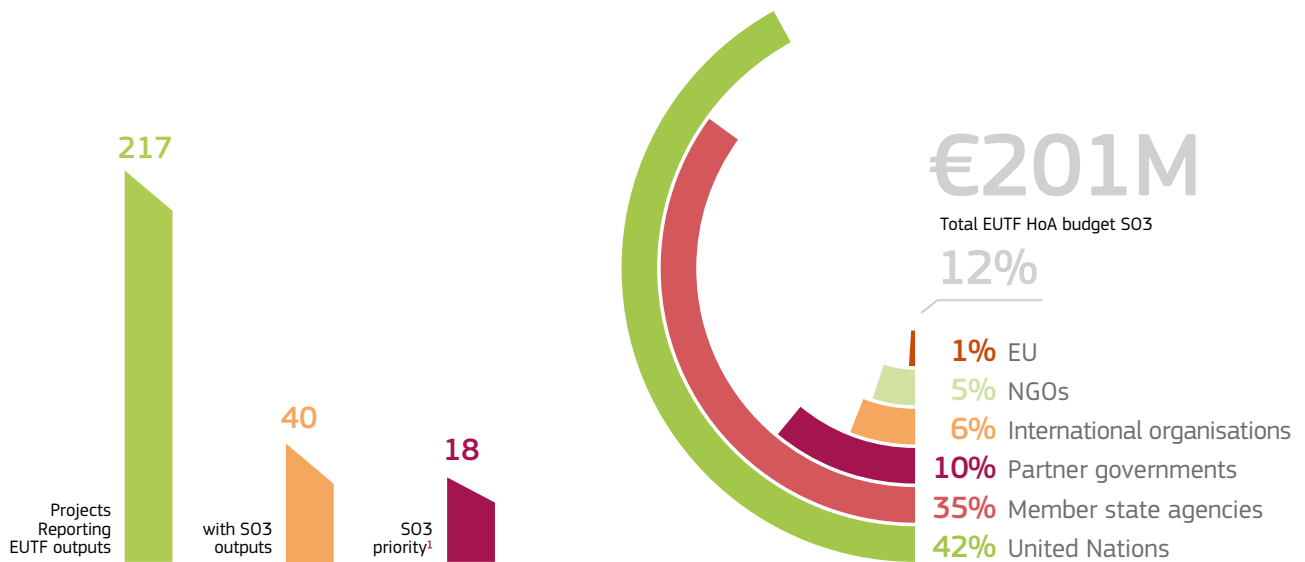


62,828
Migrants benefiting from post-arrival assistance (EUTF 3.5)



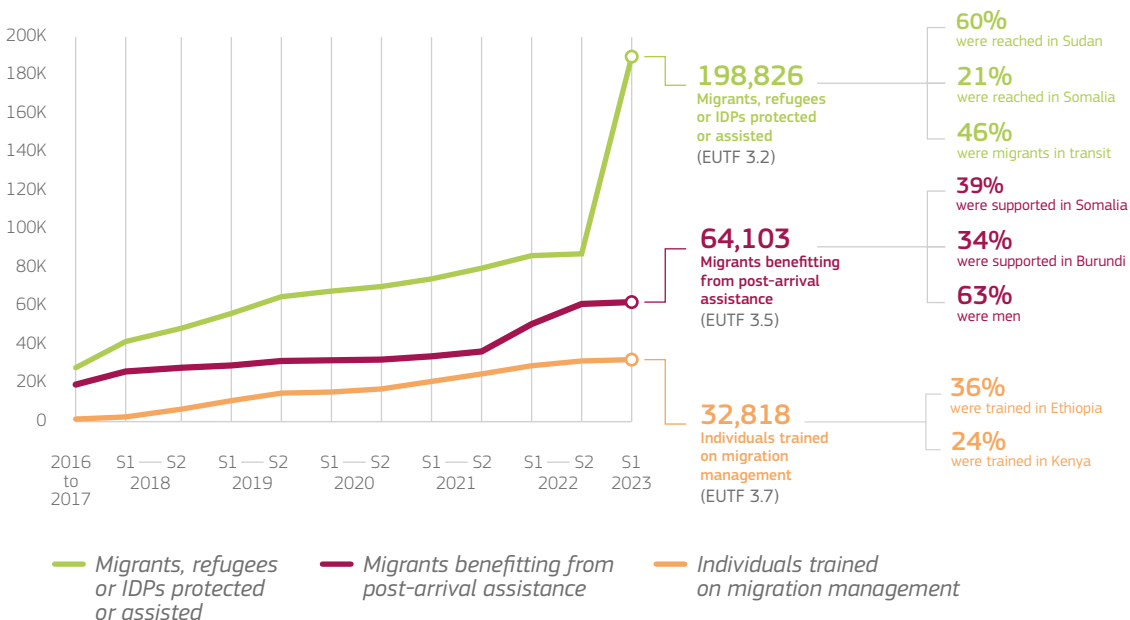
32,344
Individuals trained on migration management (EUTF 3.7)

EUTF S03 portfolio in HoA



Key S03 trends

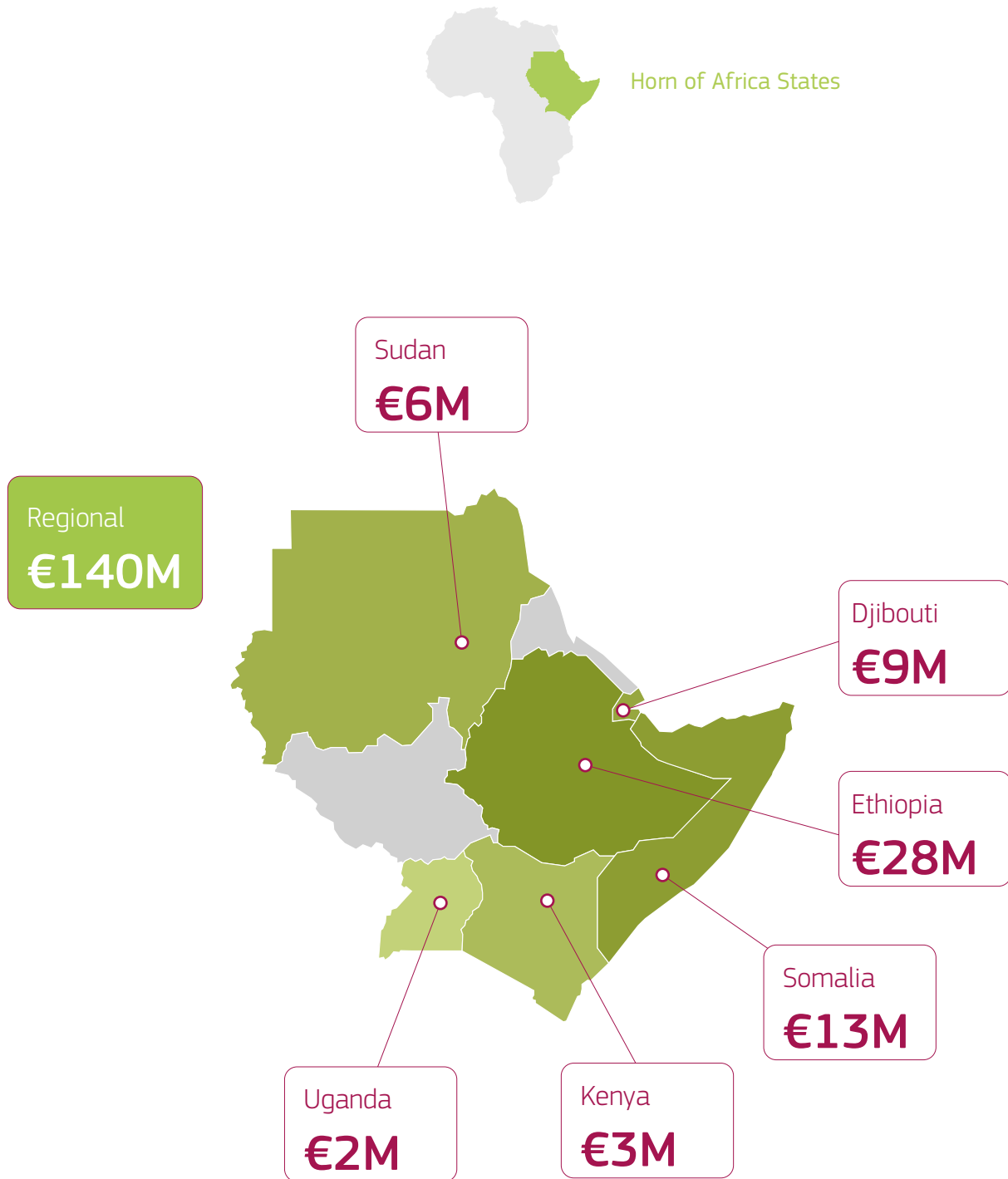
Cumulative EUTF S03 outputs





S03: Improved migration management in countries of origin, transit and destination

S03 funding by country



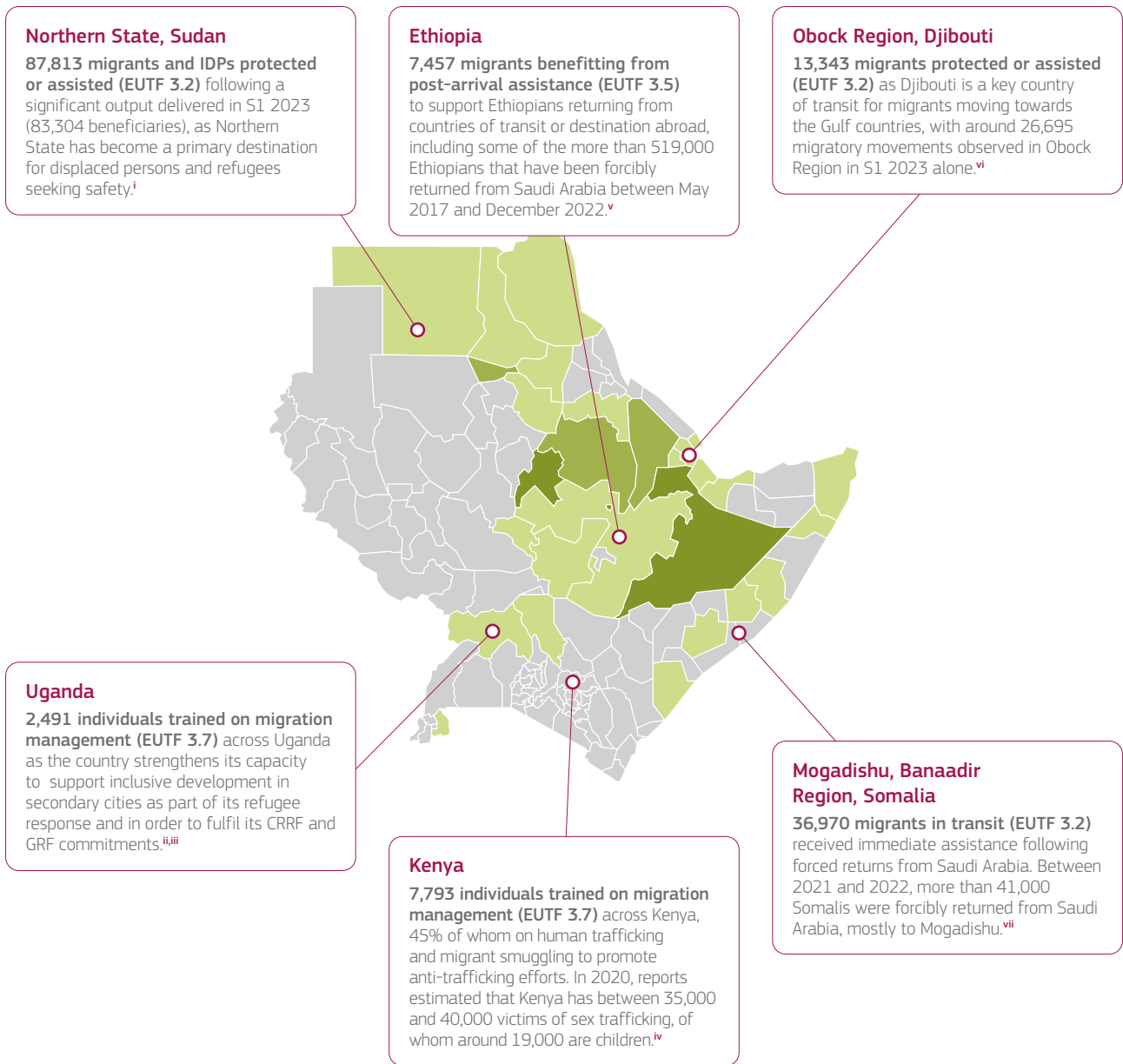


SO3: Improved migration management in countries of origin, transit and destination

Implementation areas and key SO3 outputs as of June 2023



Horn of Africa States



Number of SO3 priority projects per region²

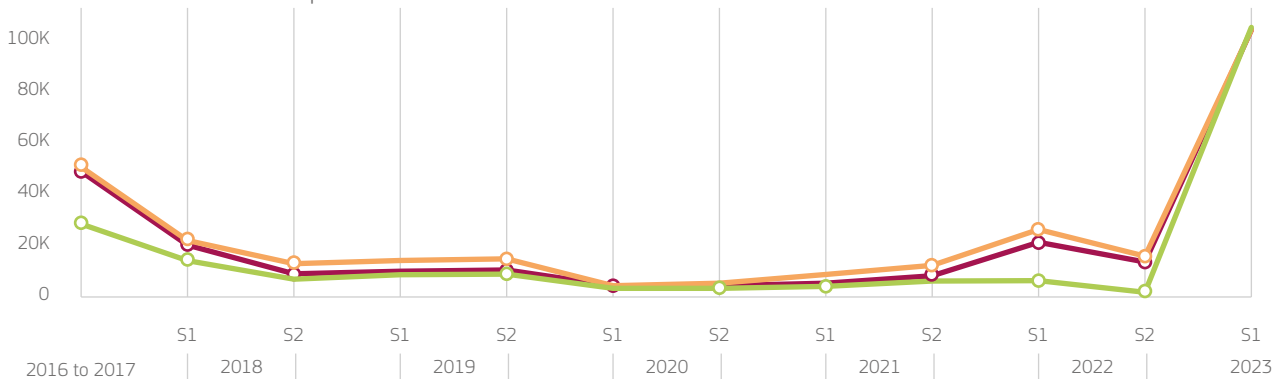




SO3: Improved migration management in countries of origin, transit and destination

Key SO3 outputs

Non-cumulative EUTF SO3 outputs



Migrants, refugees or IDPs protected or assisted 3.2



Migrants benefitting from post-arrival assistance 3.5



Individuals trained on migration management 3.7

<p>Large early output, with 14% (28,224) of all migrants³ protected reported in 2016-2017</p> <p>RE-INTEG IOM (Somalia), which has reported 19% of all migrants protected, was one of two projects that reported against this indicator in 2016 and 2017.</p> <p>Sizeable outputs from S1 2018 (14,259) to S2 2019 (8,594), followed by a drop</p> <p>Two key contributing projects, REINTEG IOM (Somalia) and BMM (regional), collectively assisted 53,759 migrants in transit and victims of trafficking before coming to an end in 2019.</p> <p>Significant increase in S1 2023 (103,436)</p> <p>S1 2023 accounts for the largest semester output reported to date, with PROTECT Danish Red Cross (Sudan) reaching more than 99% of the semester output through assistance and protection services to migrants and IDPs fleeing the ongoing conflict via Northern and Red Sea States.</p>	<p>Large early output, with 32% of all post-arrival assistance provided in 2016-2017</p> <p>RE-INTEG IOM was the only project providing post-arrival assistance before 2018. It registered and profiled more than 24,000 Somali returnees up to S1 2018, before ending in early 2019.</p> <p>Increase in outputs from S1 2021 (1,523) to S1 2022 (14,967)</p> <p>The CRRF DIRECT Protection and Assistance project and the EU-IOM JI (both regional) collectively account for 86% of post-arrival assistance delivered during this period.</p> <p>Large drop from S2 2022 (11,122) to S1 2023 (1,275)</p> <p>The end of the EU-IOM JI (regional) in S2 2022 and the absence of reporting from the ongoing CRRF DIRECT Protection and Assistance project (regional) in S1 2023 led to a large drop in outputs, leaving PROTECT DRC (Sudan) as the only project contributing to this indicator.</p>	<p>Large outputs between S2 2018 (4,053) and S2 2019 (3,895)</p> <p>Of the fourteen projects that trained relevant staff on migration management between 2016 and 2019, BMM (regional) trained 77% of the reported beneficiaries.</p> <p>Drop in 2020 (S1: 1,074 and S2: 1,633)</p> <p>Following the first phase of the programme, BMM II began implementation at the end of 2019. Although it trained comparatively few individuals during its first year of implementation and the beginning of the COVID-19 pandemic, the programme picked up implementation in 2021.</p> <p>Increase from S1 2021 (3,520) to S1 2022 (5,002) before a large decline in S2 2022 (2,027) that continued in S1 2023 (474)</p> <p>BMM II reported larger outputs in its second year of implementation and overall has trained 22% of all individuals reported to date, along with significant outputs reported by the EU-IOM JI and Disrupting Criminal Networks (both regional projects, accounting for 15% and 13% of the overall results, respectively). All three projects came to an end in S2 2022, and thus comparatively low outputs were reported in S1 2023.</p>



S03: Improved migration management in countries of origin, transit and destination

Abbreviations and acronyms

BMM	Better Migration Management
CRRF	Comprehensive Refugee Response Framework
CRRF DIRECT	CRRF Displacement responses through regional cooperation and technical exchange
GRF	Global Refugee Forum
JI	Joint Initiative
IOM	International Office for Migration
PROTECT	Protection of Persons of Concern (PoC)
RE-INTEG	Enhancing Somalia's responsiveness to the management and reintegration of mixed migration flows
S03	Improved migration management in countries of origin, transit and destination

Footnotes

1. Projects with S03 priority have a larger budget allocation to S03 than to any other Strategic Objective, per the MLS portfolio analysis.
2. The colours on the map represent the number of S03 priority projects in each region. However, the key outputs selected highlight notable results achieved by EUTF projects, and do not always correlate with the number of projects present in a given area.
3. For EUTF 3.2 only, the word 'migrants' is used as shorthand for 'migrants, refugees and IDPs' to conserve space.

Sources

- i. ACAPS Thematic report, 'Sudan – Northern State: pre-crisis and current situation', August 2023 at https://www.acaps.org/fileadmin/Data_Product/Main_media/20230829_ACAPS_thematic_report_Sudan_Northern_State_pre-crisis_and_current_situation.pdf.
- ii. Migration Policy Institute, 'Migration and displacement in secondary cities - insights from Côte d'Ivoire and Uganda', November 2023 at <https://www.migrationpolicy.org/sites/default/files/publications/mpi-migration-secondary-cities-2023-final.pdf>.
- iii. Cities Alliance, 'Uganda: Cities Alliance Joins Partnership on Refugees', at <https://www.citiesalliance.org/newsroom/news/results/uganda-cities-alliance-joins-partnership-refugees>.
- iv. US Department of State, '2023 Trafficking in persons report: Kenya', 2023 at <https://www.state.gov/reports/2023-trafficking-in-persons-report/kenya/>.
- v. IOM, 'Return of Ethiopian migrants from the Kingdom of Saudi Arabia', January 2023 at https://eastandhornofafrica.iom.int/sites/g/files/tmzbdl701/files/documents/IOM_RDH_KSA_Annual_Overview_2022.pdf.
- vi. Aggregation of figures reported in IOM DTM's 'Migration trends dashboard – Djibouti' between January and June 2023. See for instance: <https://reliefweb.int/report/djibouti/djibouti-migration-trends-dashboard-june-2023>.
- vii. IOM, '2022 migrant movements between the Horn of Africa and the Arabian Peninsula – January – December 2022', 10 February 2023 at https://eastandhornofafrica.iom.int/sites/g/files/tmzbdl701/files/documents/IOM_Migration_Overview_Horn-of-Africa-Arabian-Peninsula_2022.pdf.



European Commission

The EU Emergency Trust Fund for Africa

Address: Rue de la Loi 41, B-1049 Brussels

Phone: +32 (0) 2 299 11 11

E-mail: intpa-eutf-africa@ec.europa.eu

Website: <https://trust-fund-for-africa.europa.eu/>



**Funded by
the European Union**

Funding and non-responsibility disclaimer:

This material was produced with the financial support of the European Union through the European Emergency Trust Fund for Africa. Its contents are the sole responsibility of Altai Consulting and do not necessarily reflect the views of the European Union.

Copyright notice:

© European Union, 2023

Graphic design: Pomilio Blumm srl

Cover photo: © GIZ/Raed Saleh

Licensed to the European Union under conditions