



The European Union Emergency Trust Fund for Africa (EUTF)

Sahel and Lake Chad



Greater economic and employment opportunities

Strategic Objective 1 (SO1)
output indicators as of June 2023





S01: Greater economic and employment opportunities

Key EUTF S01 output indicators as of June 2023



149,852
Jobs created
(EUTF 1.1)

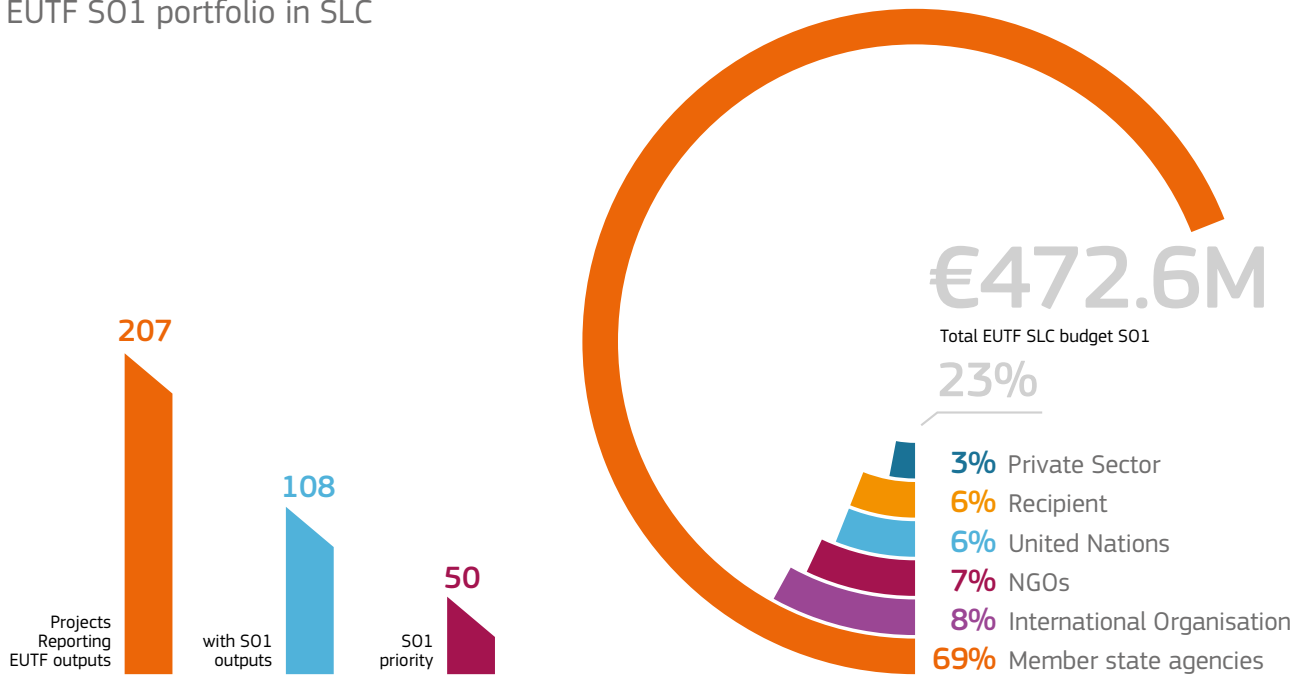


556,522
IGA beneficiaries
(EUTF 1.3)



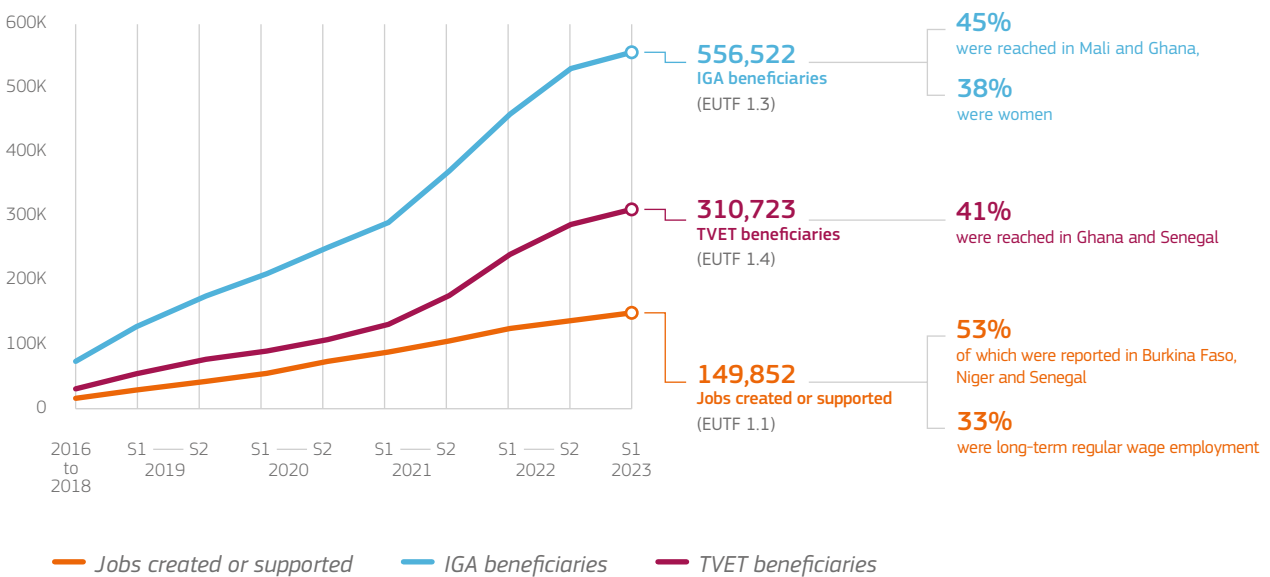
310,723
TVET beneficiaries
(EUTF 1.4)¹

EUTF S01 portfolio in SLC



Key S01 trends

Cumulative EUTF S01 outputs

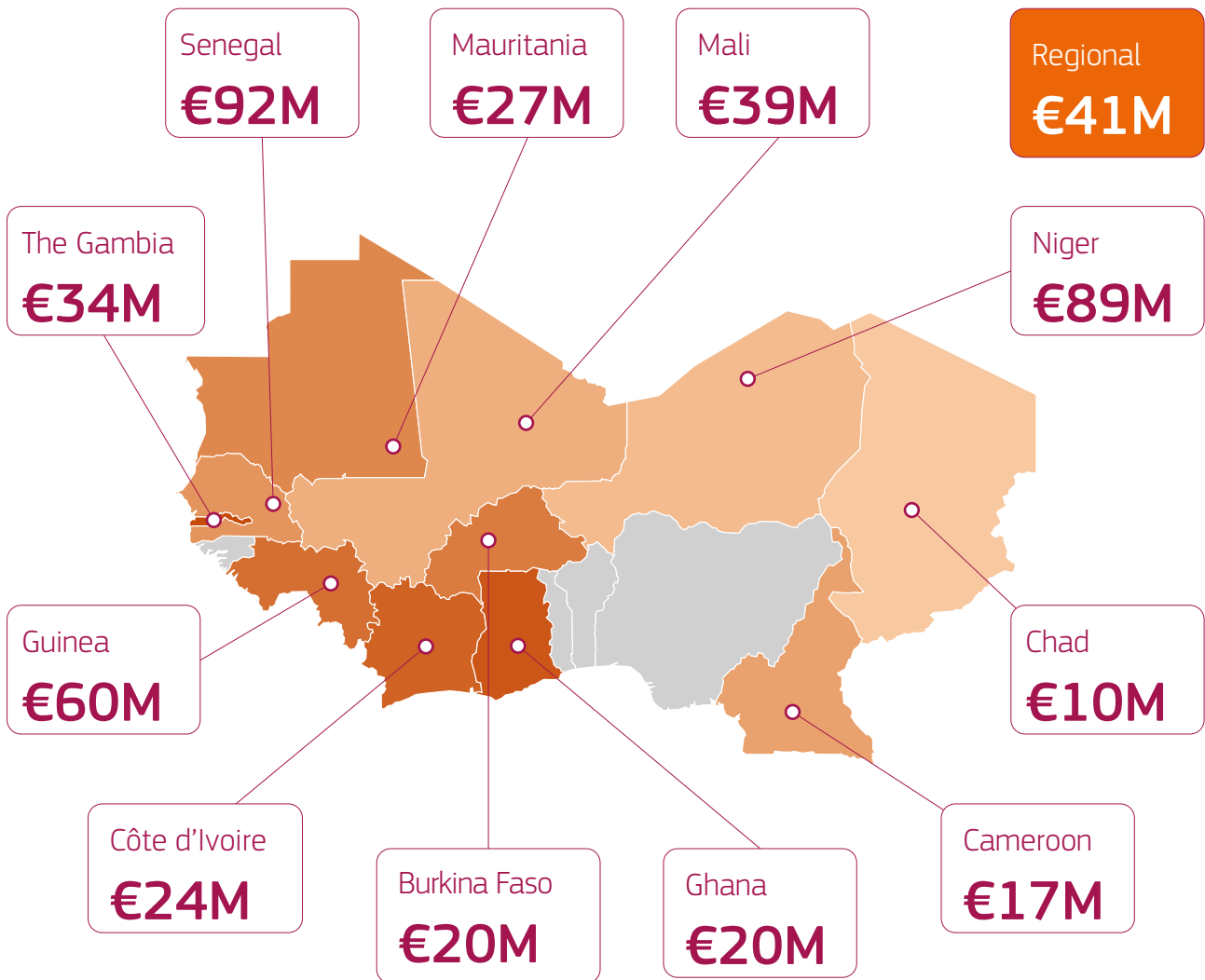




S01: Greater economic and employment opportunities

S01 funding by country

Sahel & Lake Chad States

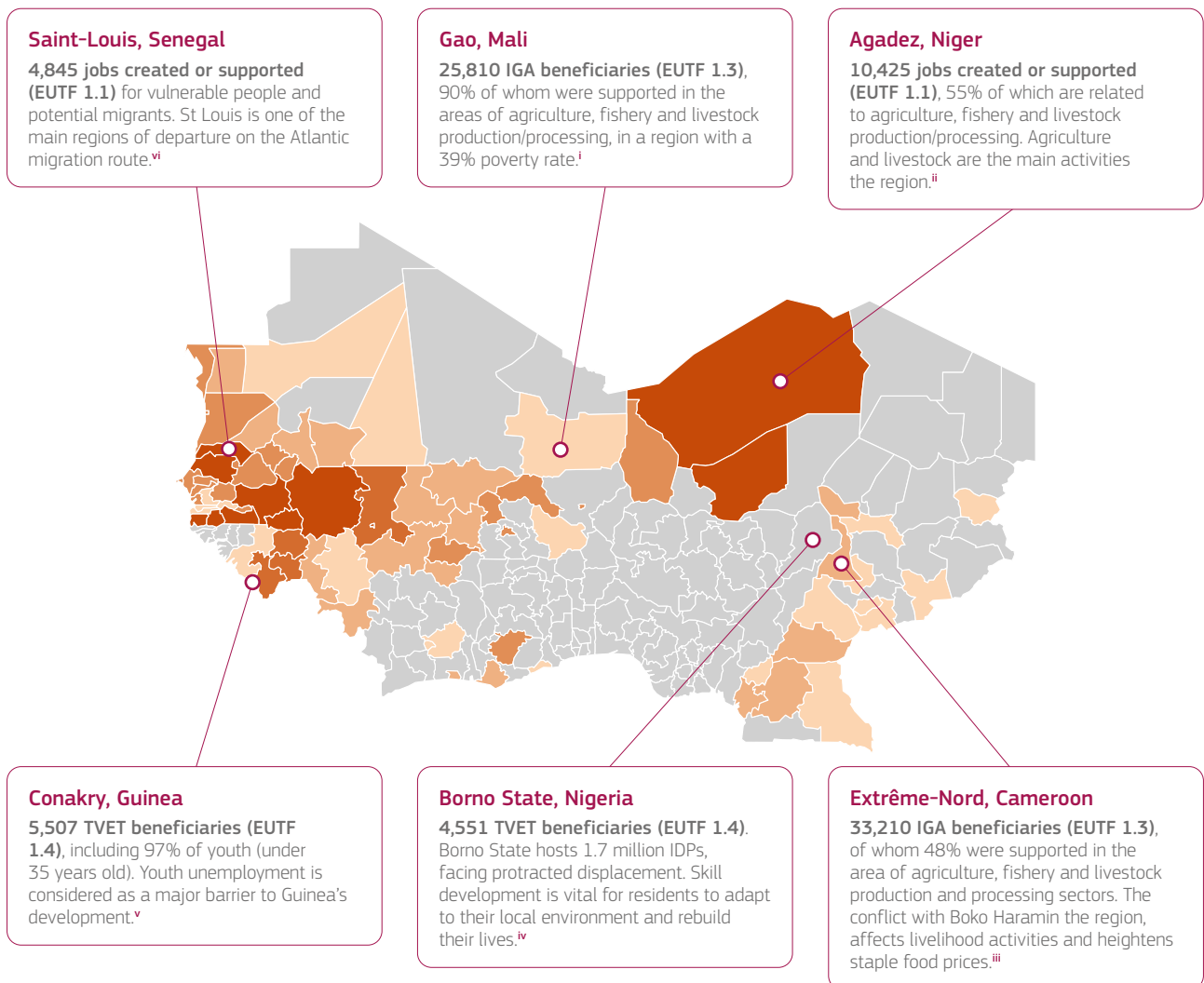




S01: Greater economic and employment opportunities

Implementation areas and key S01 outputs as of June 2023

Sahel & Lake Chad States



Number of S01 priority projects per region²

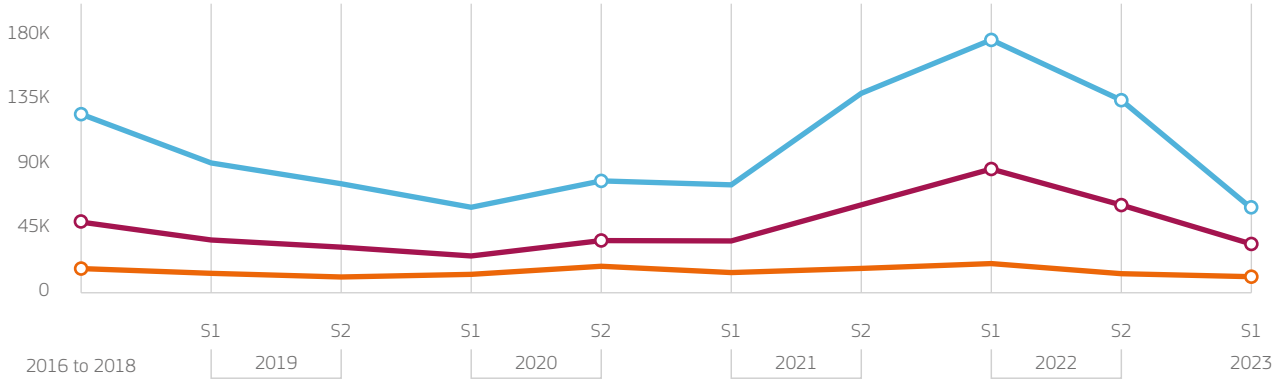




SO1: Greater economic and employment opportunities

Key SO1 outputs

Non-cumulative EUTF SO1 outputs



Jobs created or supported 1.1



IGA beneficiaries 1.3



TVET beneficiaries 1.4



Steady outputs in the 2016–2018 period, with 17,333 jobs created or supported

27 projects contributed to job creation across SLC during this period. LRRD in Nigeria, which contributed to 21% of this result, came to an end in 2018.

Peak in S1 2022 with 20,399 jobs created or supported

Niger recorded the highest number of jobs supported or created in S1 2022, totalling 7,160 jobs. Emploi Niger supported 4,821 jobs and Pôles Ruraux an additional 2,455 jobs.

Decrease in S1 2023, with 11,087 jobs created or supported

As projects in Niger approached their end, jobs created or supported in Niger dropped from 13,580 in S2 2022 to 11,087 in S1 2023. As of S1 2023, Niger accounts for 25% of jobs created or supported by EUTF-funded programmes.



Steady early outputs in the 2016–2018 period, with 74,906 people assisted to develop IGAs through 25 programmes

KEY ARC in Mali provided agricultural starter kits and ISING in Nigeria assisted beneficiaries (of whom 71% are female youths) in accessing finance through Village Savings and Loan Associations. These two projects supported more than 10,000 people each.

Highest outputs in S1 2022, with 90,582 people assisted to develop IGAs

This was driven by the GrEEn GH programme in Ghana, which supported 60,522 individuals, facilitating access to finance. PDU and Emploi Niger also made substantial contributions (7,315 beneficiaries for PDU and 5,871 beneficiaries for Emploi Niger).

Sharp decrease in S2 2022 (73,319 beneficiaries) and S1 2023 (25,890 beneficiaries)

The GrEEn GH programme retained its status as the primary output source in S2 2022 (55%). In S1 2023 the PDU programme took over and represented 63% of the semester's output, with Niger concentrating 69% of its activities.



Significant results in the 2016–2018 period, with 32,254 people benefitting from TVET

Développer l'emploi au Sénégal and Kallo Tchidaniwo in Niger were the first contributors, accounting for 41% of the outputs over the period.

Downward trend from 2019 (44,477) to 2020 (30,746) and peak in S1 2022 (66,173).

Outputs slowed down in 2020. However, the *Développer l'emploi au Sénégal* programme resumed a high pace of activities in S1 2022, alongside the GrEEn programme in Ghana, that scaled up its activity and accounted for 71% of the total output of indicator 1.4 that semester.

Slowing down of activities in S1 2023 (22,826)

The GrEEn programme contributed to the majority of outputs (55%), mainly through activities aiming to enhance the financial capabilities of the diaspora, youth, women, and returnees. The INTEGRA programme in Guinea, also accounted for a significant part of outputs (16%).



SO1: Greater economic and employment opportunities

Abbreviations and acronyms

DES AFD	Developing employment in Senegal: strengthening the local business fabric
DES LuxDev	Developing employment in Senegal: equitable access to vocational training
EJOM	Youth Employment Creates Opportunities At Home in Mali
Emploi BF	Programme d'appui à l'Emploi dans les zones frontalières et périphériques au Burkina Faso
EUTF	European Union Emergency Trust Fund for Africa
HIMO CM	Investment project to support local economic development in the Far North, promoting employment and the integration of young people (labour-based approach)
IDPs	Internally displaced persons
IFRC	International Federation of Red Cross and Red Crescent Societies
IGA	Income-generating activities
IPDEV	Supporting entrepreneurs and small SMEs in West Africa
ISING	Investing in the Safety and Integrity of Nigerian Girls
Kallo Tchidaniwo	Strengthening institutional and community resilience in the Diffa region, Lake Chad Basin, Niger
KEY ARC	Consortium Alliance pour la Résilience Communautaire
LRRD	Promoting Stability in Nigeria's Northeast
NGO	Non-governmental organisation
M	Million
PASPED	Programme to contrast illegal migration through support to the private sector and job creation in Senegal
Poles Ruraux	Support project for agricultural sectors in the regions of Tahoua and Agadez, Niger
PSS	Strengthening Psychosocial Support, Mental Health, Reintegration and Protection Services for children in Borno, including children associated with Boko Haram
SLC	Sahel and Lake Chad
SO	Strategic Objective
TUUMA	Appui à la compétence professionnelle, l'entrepreneuriat et l'emploi des jeunes en milieu rural dans des régions rurales du Burkina Faso
TVET	Technical and vocational education and training
VSLA	Village Savings and Loan Associations
YEP	Youth Empowerment Project

Footnotes

1. Throughout this section, the term 'TVET' also includes other forms of skills development.
2. The colours on the map represent the number of SO1 priority projects in each region. However, the key outputs selected highlight notable results achieved by EUTF projects, and do not always correlate with the number of projects present in a given area.

Sources

- i. INSTAT, 'Consommation pauvrete bien-etre des menages 2022', April 2023. Retrieved [here](#).
- ii. Chambre Régionale d'Agriculture d'Agadez, 'La commercialisation des produits agricoles, le rôle des comptoirs d'Agadez', October 2018. Retrieved [here](#).
- iii. USAID, 'Cameroon Assistance Overview', - October 2023. Retrieved [here](#).
- iv. IOM, 'Nigeria — North-east — Mobility Tracking Round 45 IDP and Returnee Atlas', June 2023. Retrieved [here](#).
- v. IFRC, 'Guinea 2023 IFRC network country plan', January 2023. Retrieved [here](#).
- vi. Le Point: 'Migrants du Sénégal: cette si mortelle route des Canaries', 26 september 2023. Retrieved [here](#).



European Commission

The EU Emergency Trust Fund for Africa

Address: Rue de la Loi 41, B-1049 Brussels

Phone: +32 (0) 2 299 11 11

E-mail: intpa-eutf-africa@ec.europa.eu

Website: <https://trust-fund-for-africa.europa.eu/>



**Funded by
the European Union**

Funding and non-responsibility disclaimer:

This material was produced with the financial support of the European Union through the European Emergency Trust Fund for Africa. Its contents are the sole responsibility of Altai Consulting and do not necessarily reflect the views of the European Union.

Copyright notice:

© European Union, 2023

Graphic design: Pomilio Blumm srl

Cover photo: © Investisseurs & Partenaires (I&P)

Licensed to the European Union under conditions