



# The European Union Emergency Trust Fund for Africa (EUTF)

Sahel and Lake Chad



## Greater economic and employment opportunities

Strategic Objective 1 (SO1)  
output indicators as of December 2022





## S01: Greater economic and employment opportunities

Key EUTF S01 output indicators as of December 2022



**137,059**  
Jobs created  
(EUTF 1.1)

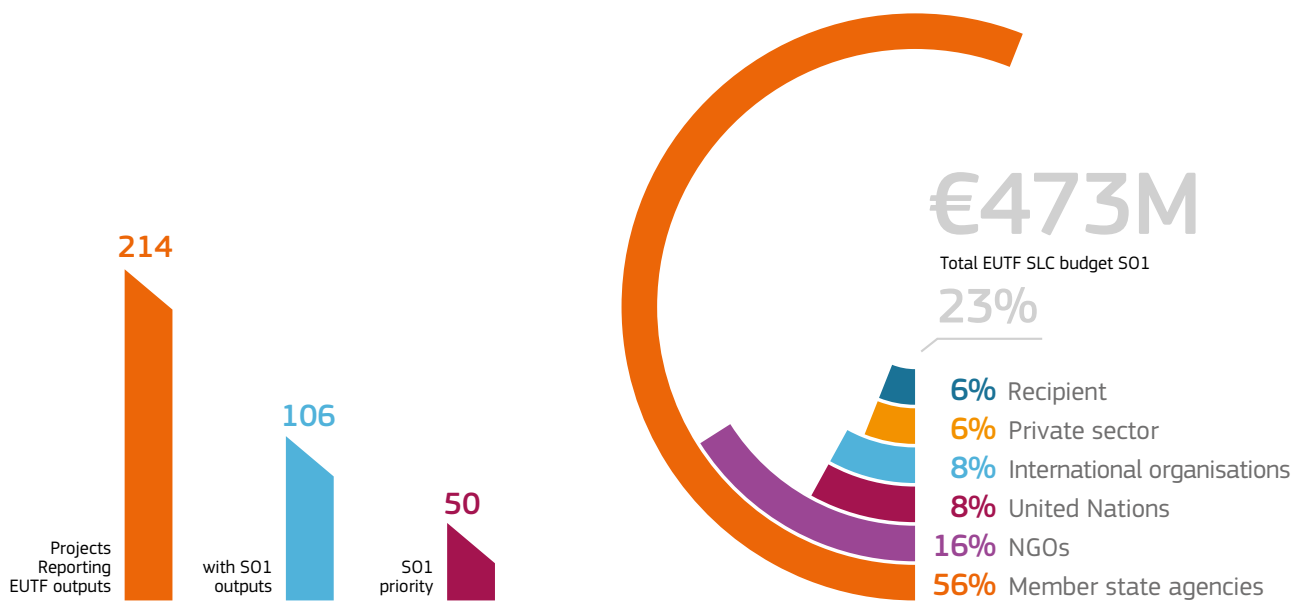


**528,478**  
IGA beneficiaries  
(EUTF 1.3)



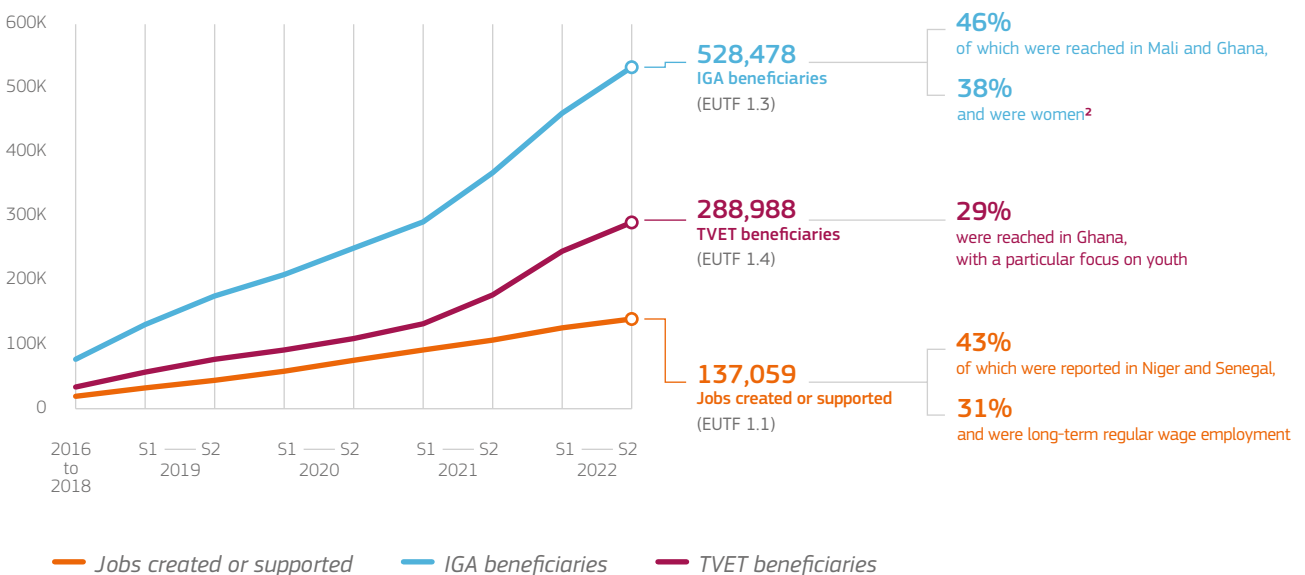
**288,988**  
TVET beneficiaries  
(EUTF 1.4)<sup>1</sup>

EUTF S01 portfolio in SLC



## Key S01 trends

Cumulative EUTF S01 outputs

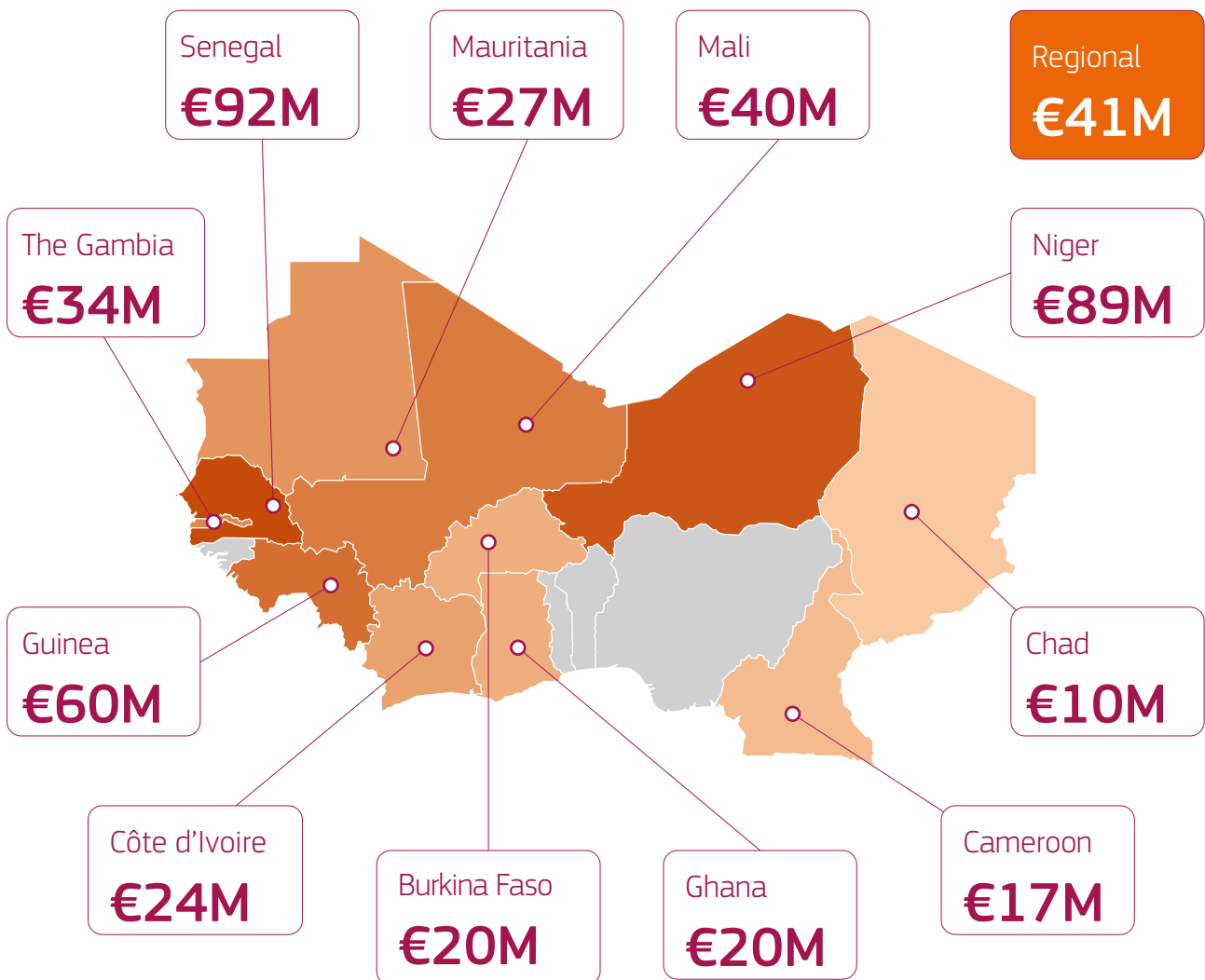




## S01: Greater economic and employment opportunities

### S01 funding by country

Sahel & Lake Chad States

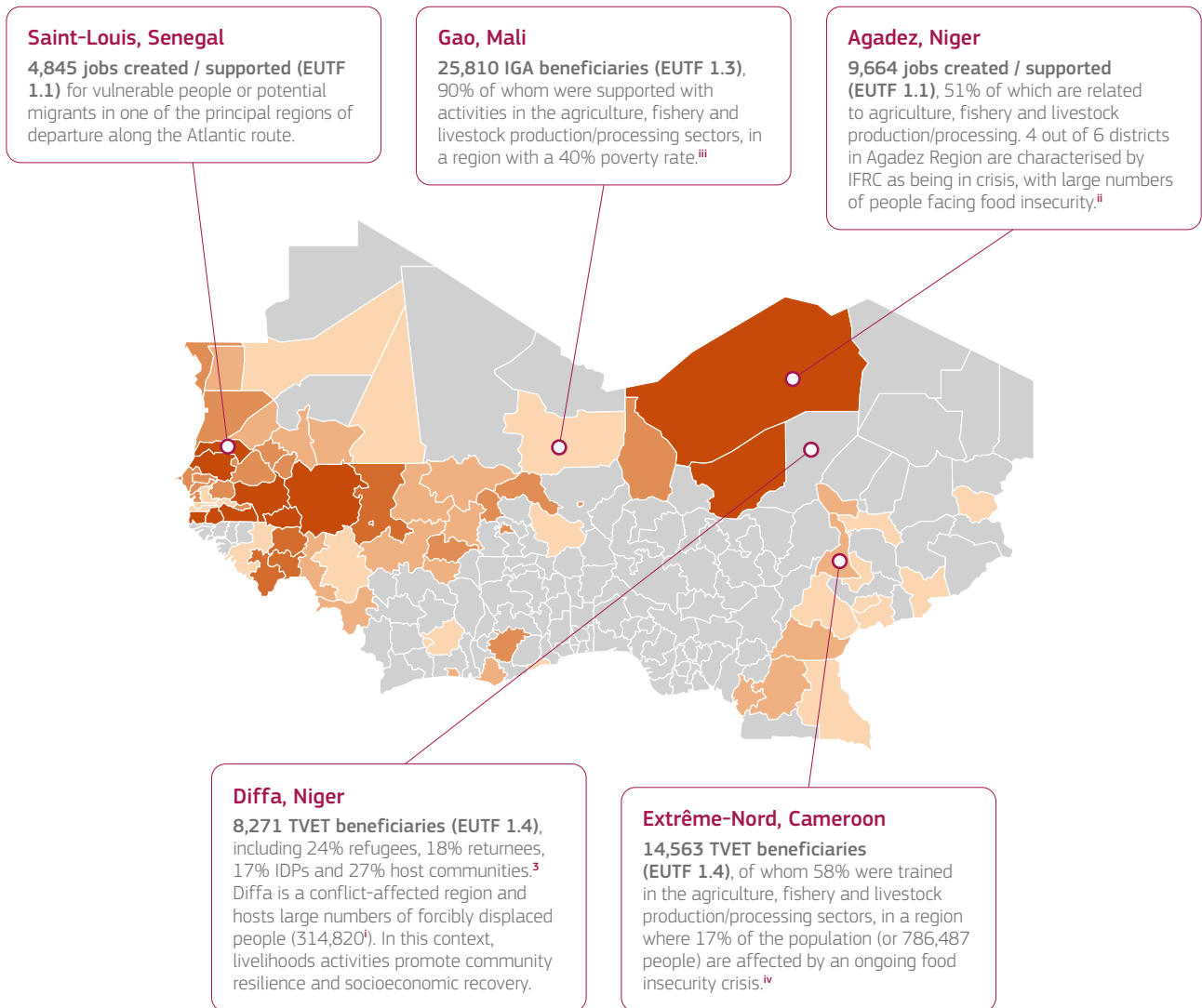




## SO1: Greater economic and employment opportunities

Implementation areas and key SO1 outputs as of December 2022

Sahel & Lake Chad States

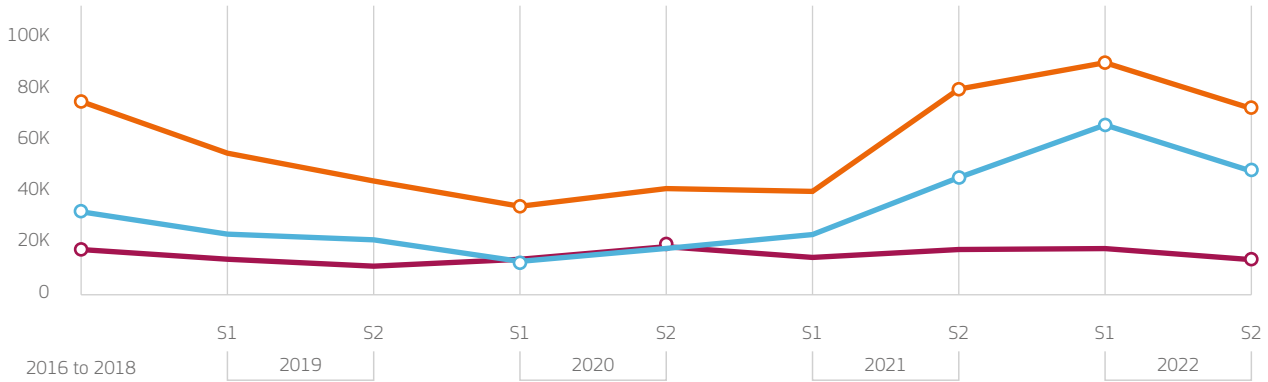




## SO1: Greater economic and employment opportunities

### Key SO1 outputs

Non-cumulative EUTF SO1 outputs



Jobs created or supported 1.1



IGA beneficiaries 1.3



TVET beneficiaries 1.4



#### Steady outputs in the 2016–2018 period, with 17,333 jobs created or supported

76 projects have supported job creation across SLC, a third of which were already implementing activities between 2016 and 2018. During these two years, the **LRRD** programme in Nigeria was the main contributor, supporting 21% of job creation beneficiaries for the period, before it came to an end in late 2018.

#### Peak in S2 2020 with 18,645 jobs created or supported

Key contributing projects, such as **PASPED**, **Emploi BF**, **TUUMA**, **Poles Ruraux**, and **DES AFD** (collectively contributing to 50% of the S2 2020 result), implemented notable job creation activities, all in Senegal, Burkina Faso and Niger. Almost three in four (73%) of the job creation beneficiaries were reached in these three countries in S2 2022.

#### Decrease in S2 2022, with 13,340 jobs created or supported

S2 2022 represents the period with the fewest number of projects reported on job creation (26 projects) since 2018. Key contributing projects such as **HIMO CM**, **DES AFD** and **PASPED** all ended prior to or during S2 2022 and contributed to more than 5% each of all beneficiaries to date, while **Poles Ruraux** (the main contributing project at 9%) is expected to end in the first half of 2023.



#### Steady early outputs in the 2016–2018 period, with 74,906 people assisted to develop IGAs

Two projects reported 30% of the IGA beneficiaries supported during this period. **KEY ARC** in Mali provided a large of agricultural starter kits and **ISING** in Nigeria anumberssisted beneficiaries (of whom 71% were female) in accessing finance through VSLAs, with each project supporting more than 10,000 IGAs in 2016–2018.

#### Dip in S1 2020, with 34,227 people assisted to develop IGAs

Key implementers of IGA activities during this period include **KEY ARC** in Mali and **PSS** in Nigeria, both of which slowed activities before coming to a close in S1 and S2 2020, respectively.

#### Increase from S2 2021 (78,997) through 2022 (161,397) in number of people assisted to develop IGAs

For the first time, two projects reported more than 10,000 IGA beneficiaries in a single semester (S2 2021), with **GrEEn UNCDF** in Ghana reporting 62% of the overall IGA output in 2022 – its second year of implementation - by supporting large-scale access to finance through financial intermediaries and digital services.



#### Steady early results in the 2016–2018 period, with 32,254 people benefitting from TVET

Several projects reported considerable outputs during this time, such as **DES LuxDev** (Senegal), **Kallo Tchidaniwo** (Niger), **PARSE** and **RESILIAN** (Cameroon) which collectively reported 64% of beneficiaries of professional trainings and skills development in the 2016–2018 period.

#### Drop in S1 2020 (12,907) in people benefitting from TVET

TVET outputs decrease significantly from S1 2019 to S1 2020, as contributing projects such as Cameroon (**RESILIAN**), Niger (**Kallo Tchidaniwo**), Senegal (**DES LuxDev**) and The Gambia (**YEP**) reach significantly fewer people in S1 2020.

#### Increase in number of people benefitting from TVET from S2 2021 (45,379) and in 2022 (113,292)

**GrEEn UNCDF** in Ghana is the single most important contributor to the peak in TVET and skills development outputs in 2022 (reaching 56% of all beneficiaries reported throughout the year), making it the project with the most significant contribution (24%) of all 66 projects reporting on TVET to date. The project aims to build the financial and entrepreneurial capabilities of the diaspora, youths, women and returnees.



## SO1: Greater economic and employment opportunities

### Abbreviations and acronyms

<b>DES AFD</b>	Developing employment in Senegal: strengthening the local business fabric
<b>DES LuxDev</b>	Developing employment in Senegal: equitable access to vocational training
<b>EJOM</b>	Youth Employment Creates Opportunities At Home in Mali
<b>Emploi BF</b>	Programme d'appui à l'Emploi dans les zones frontalières et périphériques au Burkina Faso
<b>EUTF</b>	European Union Emergency Trust Fund for Africa
<b>HIMO CM</b>	Investment project to support local economic development in the Far North, promoting employment and the integration of young people (labour-based approach)
<b>IDPs</b>	Internally displaced persons
<b>IFRC</b>	International Federation of Red Cross and Red Crescent Societies
<b>IGA</b>	Income-generating activities
<b>IPDEV</b>	Supporting entrepreneurs and small SMEs in West Africa
<b>ISING</b>	Investing in the Safety and Integrity of Nigerian Girls
<b>Kallo Tchidaniwo</b>	Strengthening institutional and community resilience in the Diffa region, Lake Chad Basin, Niger
<b>KEY ARC</b>	Consortium Alliance pour la Résilience Communautaire
<b>LRRD</b>	Promoting Stability in Nigeria's Northeast
<b>NGO</b>	Non-governmental organisation
<b>M</b>	Million
<b>PASPED</b>	Programme to contrast illegal migration through support to the private sector and job creation in Senegal
<b>Poles Ruraux</b>	Support project for agricultural sectors in the regions of Tahoua and Agadez, Niger
<b>PSS</b>	Strengthening Psychosocial Support, Mental Health, Reintegration and Protection Services for children in Borno, including children associated with Boko Haram
<b>SLC</b>	Sahel and Lake Chad
<b>SO</b>	Strategic Objective
<b>TUUMA</b>	Appui à la compétence professionnelle, l'entrepreneuriat et l'emploi des jeunes en milieu rural dans des régions rurales du Burkina Faso
<b>TVET</b>	Technical and vocational education and training
<b>VSLA</b>	Village Savings and Loan Associations
<b>YEP</b>	Youth Empowerment Project

### Footnotes

1. Throughout this section, the term 'TVET' also includes other forms of skills development.
2. 38% women, 30% men, 32% unspecified.
3. The remaining 14% are unspecified.
4. The colours on the map represent the number of SO1 priority projects in each region. However, the key outputs selected highlight notable results achieved by EUTF projects, and do not always correlate with the number of projects present in a given area.

### Sources

- i. UNHCR, 'Niger - Country Operation Update', June 2023. Retrieved [here](#).
- ii. IFRC, 'Niger: Food insecurity crisis – Emergency appeal No. MDRNE026 – Operational strategy', July 2022. Retrieved [here](#).
- iii. World Bank, 'Renforcer le lien entre croissance économique et réduction de la pauvreté au Mali', 2021. Retrieved [here](#).
- iv. UNOCHA, 'Cadre Harmonisé and IPC estimations for West and Central Africa'. January 2023. Retrieved [here](#).



**European Commission**

The EU Emergency Trust Fund for Africa

**Address:** Rue de la Loi 41, B-1049 Brussels

**Phone:** +32 (0) 2 299 11 11

**E-mail:** [intpa-eutf-africa@ec.europa.eu](mailto:intpa-eutf-africa@ec.europa.eu)

**Website:** <https://trust-fund-for-africa.europa.eu/>



**Funded by  
the European Union**

**Funding and non-responsibility disclaimer:**

*This material was produced with the financial support of the European Union through the European Emergency Trust Fund for Africa. Its contents are the sole responsibility of Altai Consulting and do not necessarily reflect the views of the European Union.*

**Copyright notice:**

© European Union, 2023

**Graphic design:** Pomilio Blumm srl

**Cover photo:** © Investisseurs & Partenaires (I&P)

Licensed to the European Union under conditions