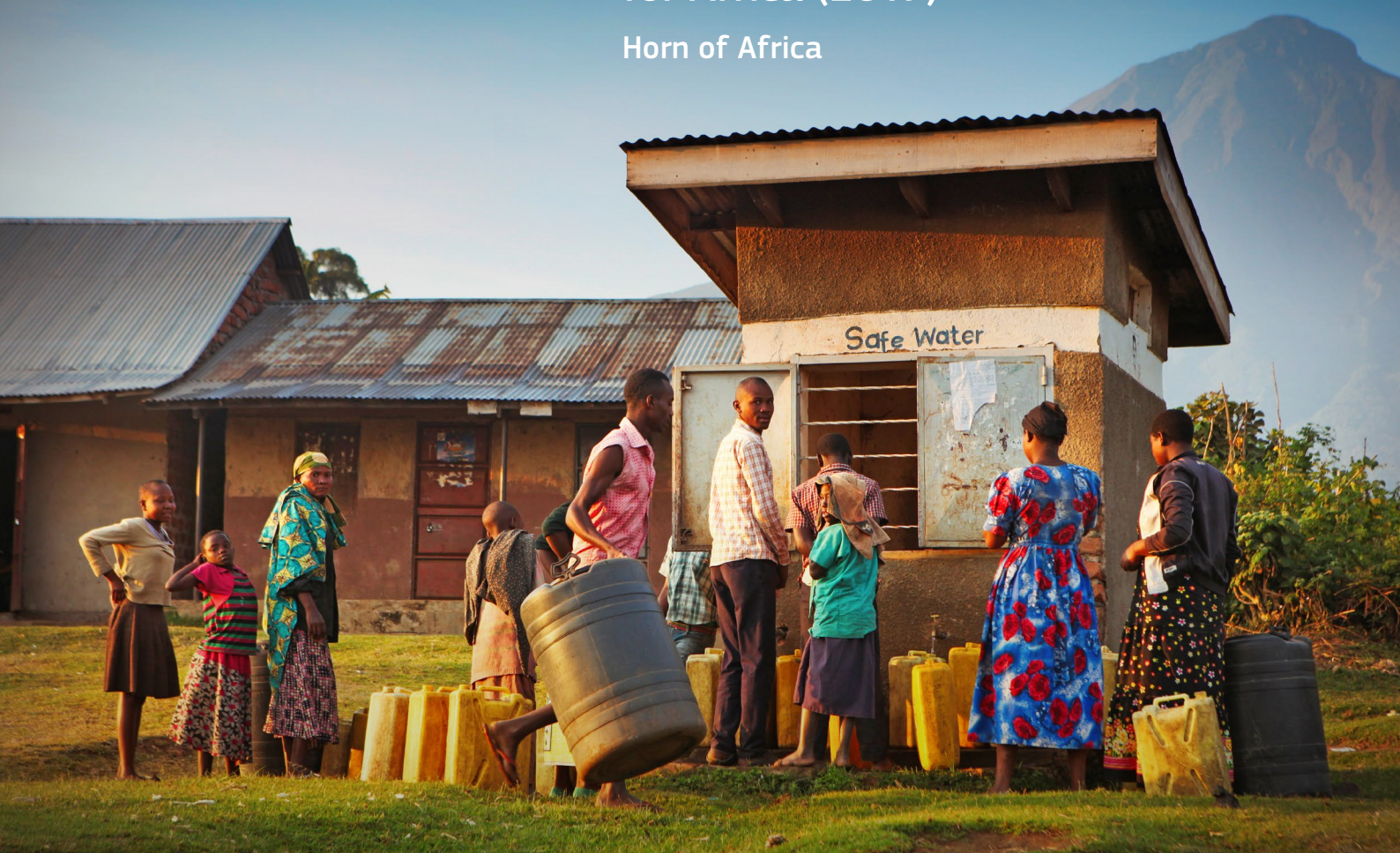




The European Union Emergency Trust Fund for Africa (EUTF)

Horn of Africa



Strengthening the resilience
of communities and particularly
the most vulnerable, including
refugees and other displaced people

Strategic Objective 2 (SO2)
output indicators as of June 2023



S02: Strengthening the resilience of communities and particularly the most vulnerable, including refugees and other displaced people

Key EUTF S02 output indicators as of June 2023



9,130,546
Basic social
services delivered
(EUTF 2.2)

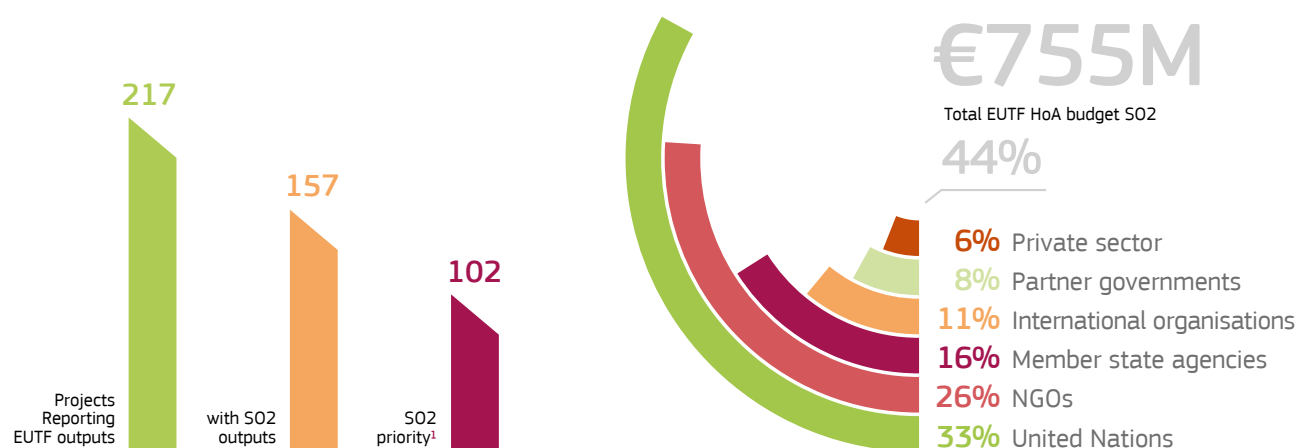


5,162,499
Food security
beneficiaries
(EUTF 2.4)



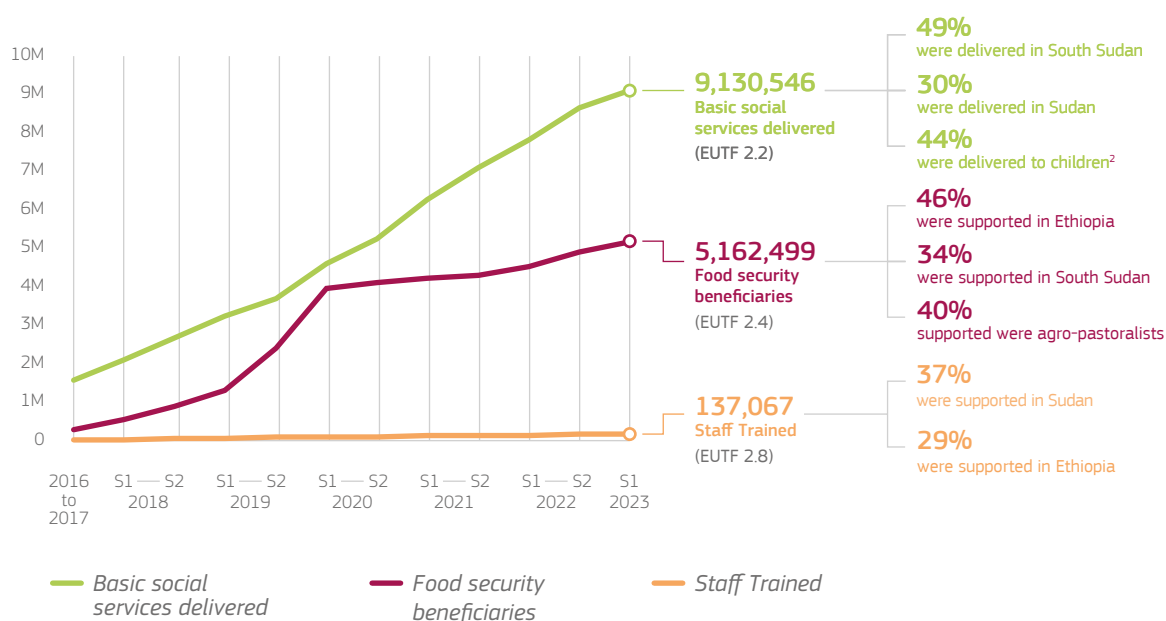
137,067
Staff trained to
strengthen service
delivery (EUTF 2.8)

EUTF S02 portfolio in HoA



Key S02 trends

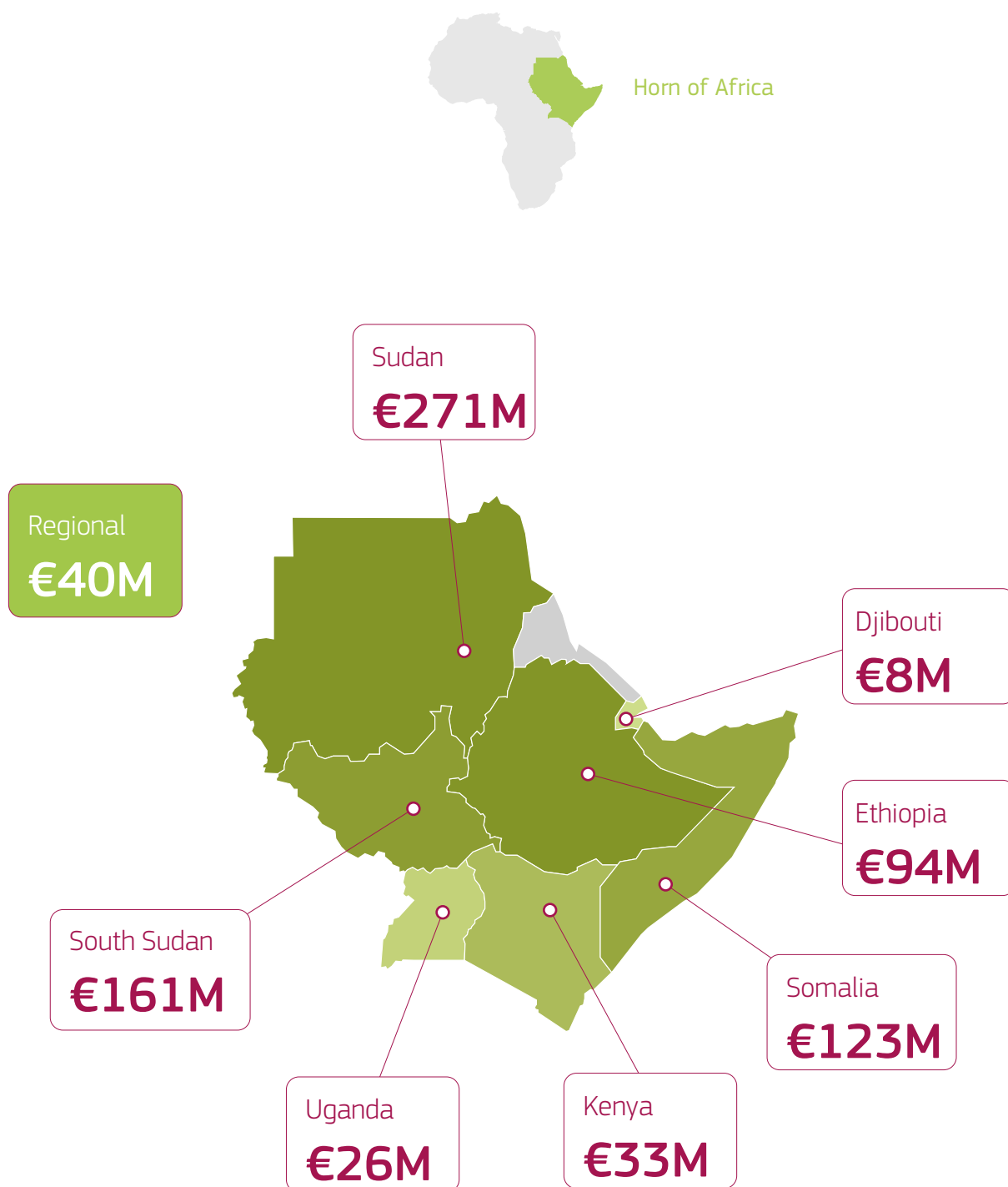
Cumulative EUTF S02 outputs





S02: Strengthening the resilience of communities and particularly the most vulnerable, including refugees and other displaced people

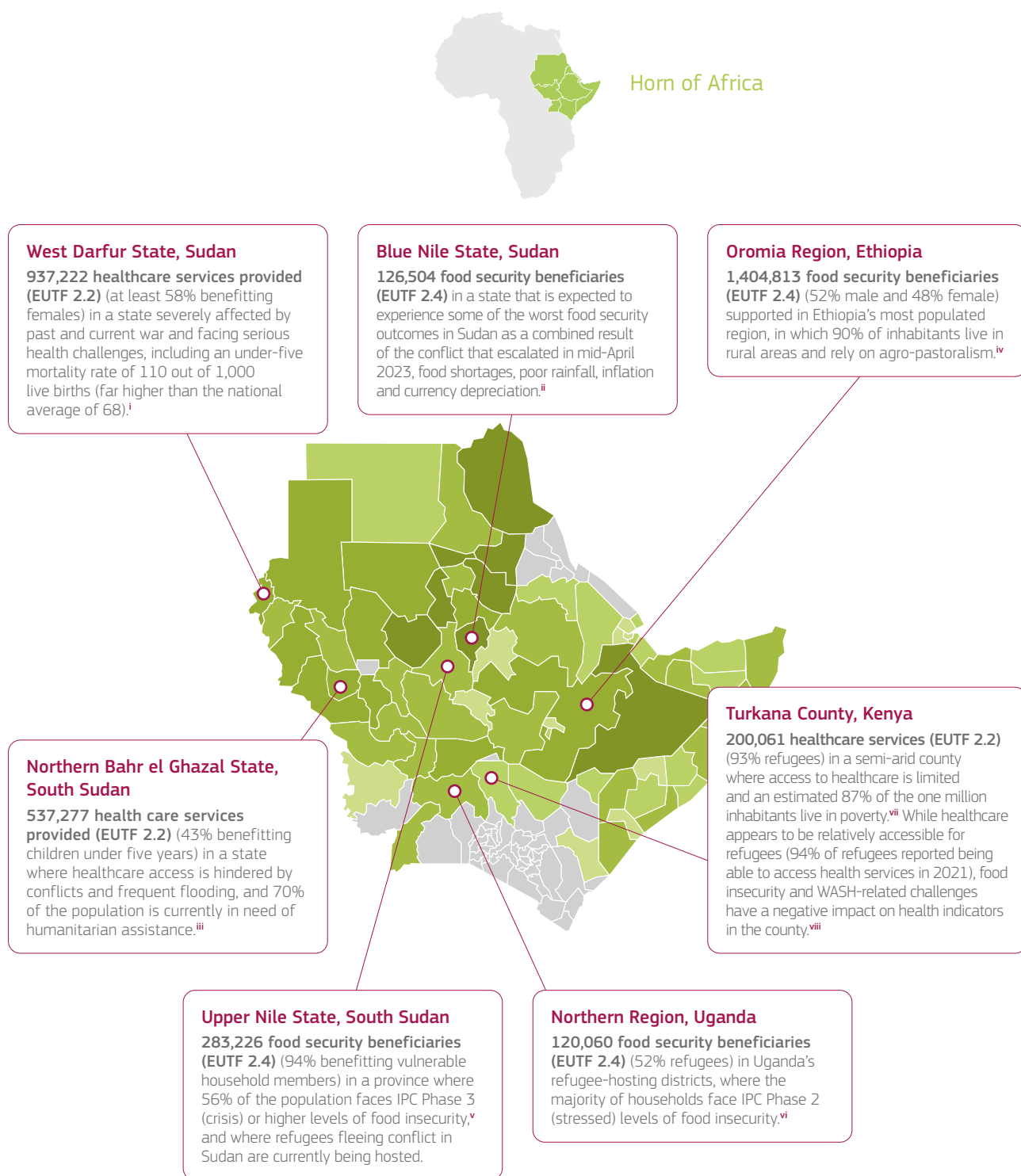
S02 funding by country





S02: Strengthening the resilience of communities and particularly the most vulnerable, including refugees and other displaced people

Implementation areas and key S02 outputs as of June 2023

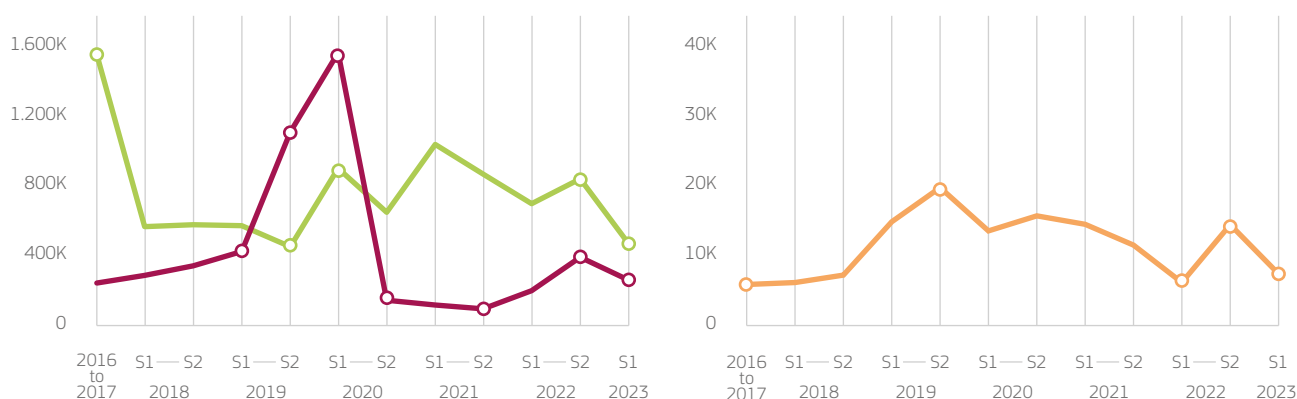




SO2: Strengthening the resilience of communities and particularly the most vulnerable, including refugees and other displaced people

Key SO2 outputs

Non-cumulative EUTF SO2 outputs



Basic social services delivered 2.2



Food security beneficiaries 2.4



Staff Trained 2.8

<p>Large early output: 17% of all basic services were delivered in 2016-2017</p> <p>HPF II (South Sudan) provided medical treatments and consultations to 1,409,013 people (47% of whom were children under five years) in South Sudan between 2016 and 2017.</p> <p>Lowest semesterly output reported in S2 2019 (452, 514)</p> <p>HPF II ended in S2 2018, while other contributing projects under the RDPP ET (Ethiopia) and Resilience Darfur SD (Sudan) programmes slowed down their provision of basic services before ending in 2020.</p> <p>Larger outputs reported from S1 2020 (897,048) to S2 2022 (835,762), followed by a drop in S1 2023 (468,050)</p> <p>The HPF III (South Sudan) and BRICK (Sudan) programmes collectively account for 30% of the services delivered to date, and reported 89% of their combined output between S1 2020 and S2 2022. Both programmes ended in S1 2023 and reported their lowest biannual outputs during that period.</p>	<p>Steady increase through S1 2019 (422,331) and largest biannual outputs reported in S2 2019 (1,099,669) and S1 2020 (1,552,164)</p> <p>Cross-Border El Niño SS FAO (South Sudan) and RESET II DCA (Ethiopia) carried out massive livestock vaccination and treatment activities, accounting for 66% of the output reported prior to S2 2020.</p> <p>Large drop in S2 2020 (147,227), through to the lowest biannual output thus far reported in S2 2021 (98,221)</p> <p>The main contributors to food security-related activities – El Niño SS FAO (South Sudan), the RESET II programme (Ethiopia) and the regional Cross Border II DRC project came to an end between S2 2020 and S2 2021.</p> <p>Increase through S2 2022 (389,255)⁴ followed by renewed drop in S1 2023 (260,075)</p> <p>Several projects reporting food security-related outputs ended in 2021 and 2022. Moreover, the DRR programme (Ethiopia) was unable to report outputs in S1 2023.</p>	<p>Steady increase from 2016-2017 (5,854) to S2 2019 (19,694)</p> <p>Several programmes across the region – such as RESET II and RDPP ET (Ethiopia), EQUIP and Nutrition Eastern Sudan (Sudan) – trained staff from 2016 to S2 2019 to strengthen service delivery.</p> <p>Lowest semesterly output reported in S1 2022 (6,131)⁵</p> <p>Significant contributors – such as the EQUIP and Resilience East SD (Sudan), Education in Emergency (South Sudan) and RDPP ET (Ethiopia) programmes, which collectively reached 16% of all staff trained to date – ended between S2 2021 and S1 2022.</p> <p>Increase in S2 2022 (14,512)⁶ before dropping again in S1 2023 (7,518)</p> <p>Improving Nutrition WFP (Sudan) and CRRF KE Self Reliance (Kenya) scaled up their capacity building activities and reported their largest biannual outputs to date in S2 2022.</p>



SO2: Strengthening the resilience of communities and particularly the most vulnerable, including refugees and other displaced people

Abbreviations and acronyms

BRICK	Building resilient communities in West Kordofan
CRRF	Comprehensive Refugee Response Framework
CRRF KE Self Reliance	Enhancing self-reliance for refugees and host communities in Kenya
DCA	DanChurchAid
DRC	Danish Refugee Council
DRR (programme)	Strengthening Decentralized Disaster Risk Reduction Management in Ethiopia
Education in Emergency	Education in Emergency Programme in Four Former States in South Sudan
El Nino SS	Strengthening the Livelihoods Resilience of Pastoral and Agro-Pastoral Communities in South Sudan's cross-border areas with Sudan, Ethiopia, Kenya and Uganda
EQUIP	Education Quality Improvement Programme
ET	Ethiopia
EUTF	European Union Emergency Trust Fund for Africa
FAO	Food and Agriculture Organization of the United Nations
HoA	Horn of Africa
HPF	Health Pooled Fund
KE	Kenya
M	Million
NGO	Non-governmental organisation
Nutrition Eastern Sudan	Improving Nutrition and Reducing Stunting in Eastern Sudan
RDPP	Regional Development and Protection Programme
RESET	Resilience Building and Creation of Economic Opportunities in Ethiopia
Resilience Darfur	Strengthening Resilience for IDPs, Returnees and Host Communities in Kulbus and Jebel Moon West Darfur
Resilience East	Strengthening resilience of refugees, IDPs and host communities in Eastern Sudan
SD	Sudan
SO	Strategic Objective
SS	South Sudan
WFP	World Food Programme

Footnotes

1. Projects with SO2 priority have a larger budget allocation to SO2 than to any other Strategic Objective, per the MLS portfolio analysis.
2. The age of 53% of service delivery beneficiaries (EUTF 2.2) is unspecified.
3. The colours on the map represent the number of SO2 priority projects in each region. However, the key outputs selected highlight notable results achieved by EUTF projects, and do not always correlate with the number of projects present in a given area.
4. The S2 2022 output reported here differs from the 279,225 beneficiaries reported in the previous infographic, which is attributable to data reported retroactively, mainly by the DRR Oromia project (Ethiopia).
5. The S1 2022 output reported here differs from the 6,001 beneficiaries reported in the previous infographic, which is attributable to minor data corrections by RED UBF (Uganda) and the retroactive inclusion of the ILED RAAISE FAO (Somalia) project in the MLS.
6. The S2 2022 output reported here differs from the 12,948 beneficiaries reported in the previous infographic, which is similarly attributed to data corrections by RED UBF and retroactive inclusion of ILED RAAISE FAO, although the difference is mainly due to data reported retroactively by the RESET Plus Amref II project (Ethiopia).

Sources

- i. ACAPS, 'Sudan – West Darfur pre-crisis profile', 18 July 2023 at https://www.acaps.org/fileadmin/Data_Product/Main_media/20230718_ACAPS_Thematic_report_Sudan_West_Darfur_conflict.pdf.
- ii. Mercy Corps, 'Sudan crisis analysis conflict and food insecurity in Sudan: Key risks and locally led responses (July 2023)', 31 July 2023 at <https://reliefweb.int/report/sudan/sudan-crisis-analysis-conflict-and-food-insecurity-sudan-key-risks-and-locally-led-responses-july-2023>.
- iii. REACH, 'Humanitarian Situation Monitoring, Greater Bahr el Ghazal, November 2022 - March 2023 | South Sudan', 26 June 2023 at <https://reliefweb.int/report/south-sudan/humanitarian-situation-monitoring-greater-bahr-el-ghazal-november-2022-march-2023-south-sudan>.
- iv. ILO, 'Approach to inclusive market systems assessment in Ethiopia: Oromia, Southern Nations, Nationalities and Peoples, and Addis Ababa', 2022 at https://www.ilo.org/wcmsp5/groups/public/---africa/---ro-abidjan/---sro-addis_ababa/documents/publication/wcms_867973.pdf.
- v. IPC, 'South Sudan: Acute food insecurity and malnutrition September 2023 – July 2024 report', 6 November 2023 at https://www.ipcinfo.org/fileadmin/user_upload/ipcinfo/docs/IPC_South_Sudan_Acute_Food_Insecurity_Malnutrition_Sep2023_July2024_report.pdf.
- vi. FEWSNET, 'Uganda Food Security Outlook, June 2023 to January 2024', 24 July 2023.
- vii. UNOPS, 'The long walk', n.d. at <https://www.unops.org/news-and-stories/stories/the-long-walk-accessing-health-in-Turkana>.
- viii. REACH, 'Multi-sectoral needs assessment – Kakuma refugee camps, Turkana County, Kenya, October 2020', 19 March 2021 at <https://reliefweb.int/report/kenya/multi-sectoral-needs-assessment-kakuma-refugee-camps-turkana-county-kenya-october-2020>.



European Commission

The EU Emergency Trust Fund for Africa

Address: Rue de la Loi 41, B-1049 Brussels

Phone: +32 (0) 2 299 11 11

E-mail: intra-eutf-africa@ec.europa.eu

Website: <https://trust-fund-for-africa.europa.eu/>



Funded by the European Union

Funding and non-responsibility disclaimer:

This material was produced with the financial support of the European Union through the European Emergency Trust Fund for Africa. Its contents are the sole responsibility of Altai Consulting and do not necessarily reflect the views of the European Union.

Copyright notice:

© European Union, 2023

Graphic design: Pomilio Blumm srl

Cover photo: © Istock photo

Licensed to the European Union under conditions