



The European Union Emergency Trust Fund for Africa (EUTF)

Horn of Africa



Strengthening the resilience
of communities and in particular
the most vulnerable including
refugees and other displaced people

Strategic Objective 2 (SO2)
output indicators as of December 2022





S02: Strengthening the resilience of communities and in particular the most vulnerable including refugees and other displaced people

Key EUTF S02 output indicators as of December 2022



8,710,058
Basic social services delivered (EUTF 2.2)

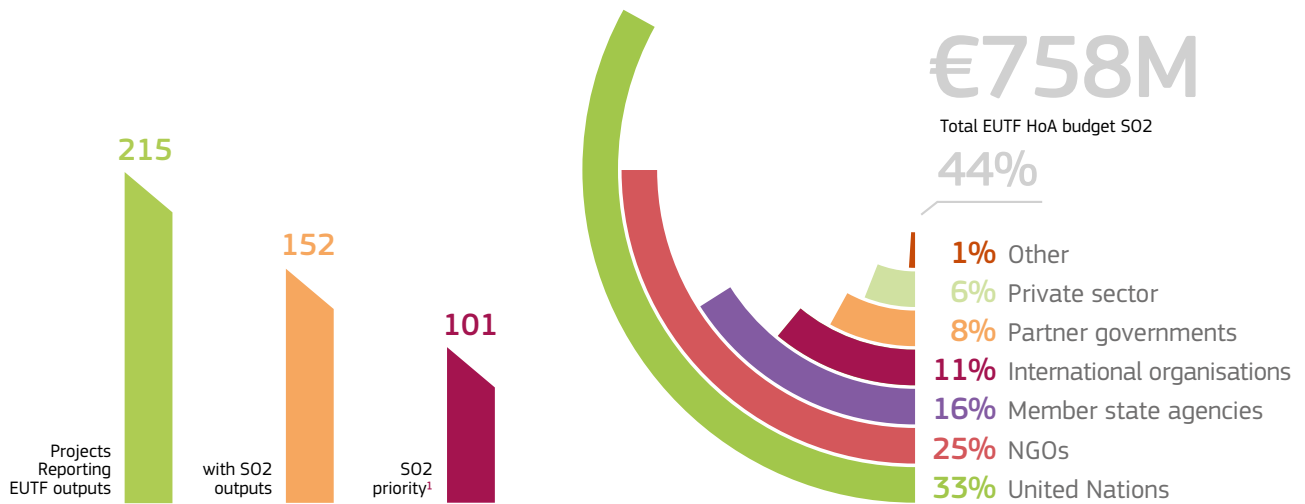


4,687,418
Food security beneficiaries (EUTF 2.4)



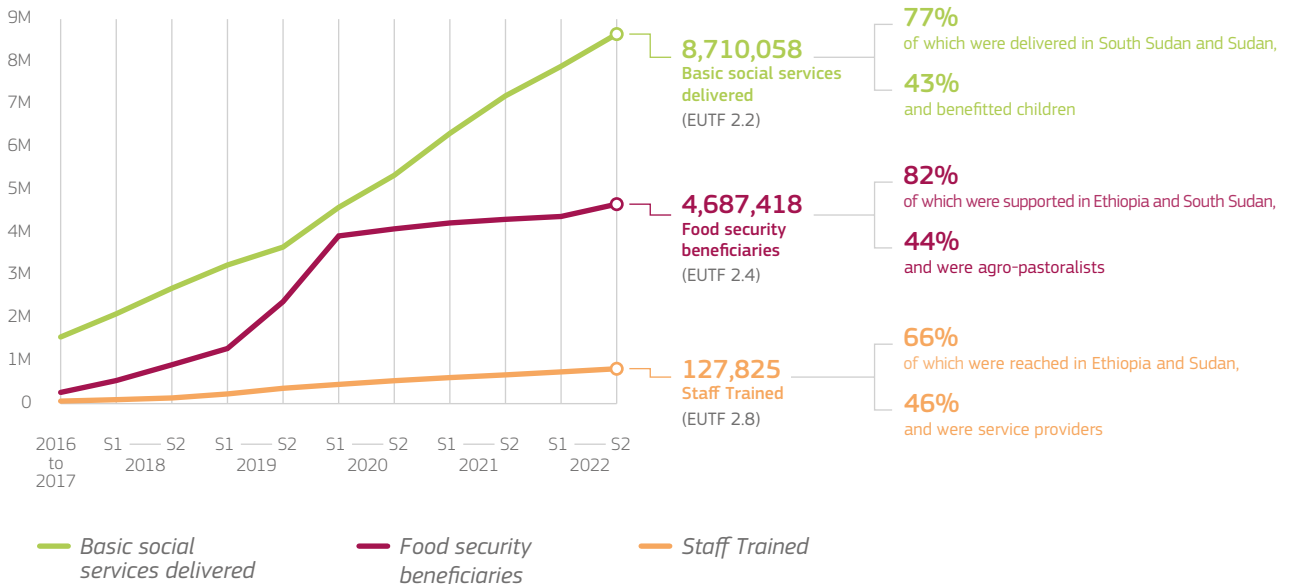
127,825
Staff trained to strengthen service delivery (EUTF 2.8)

EUTF S02 portfolio in HoA



Key S02 trends

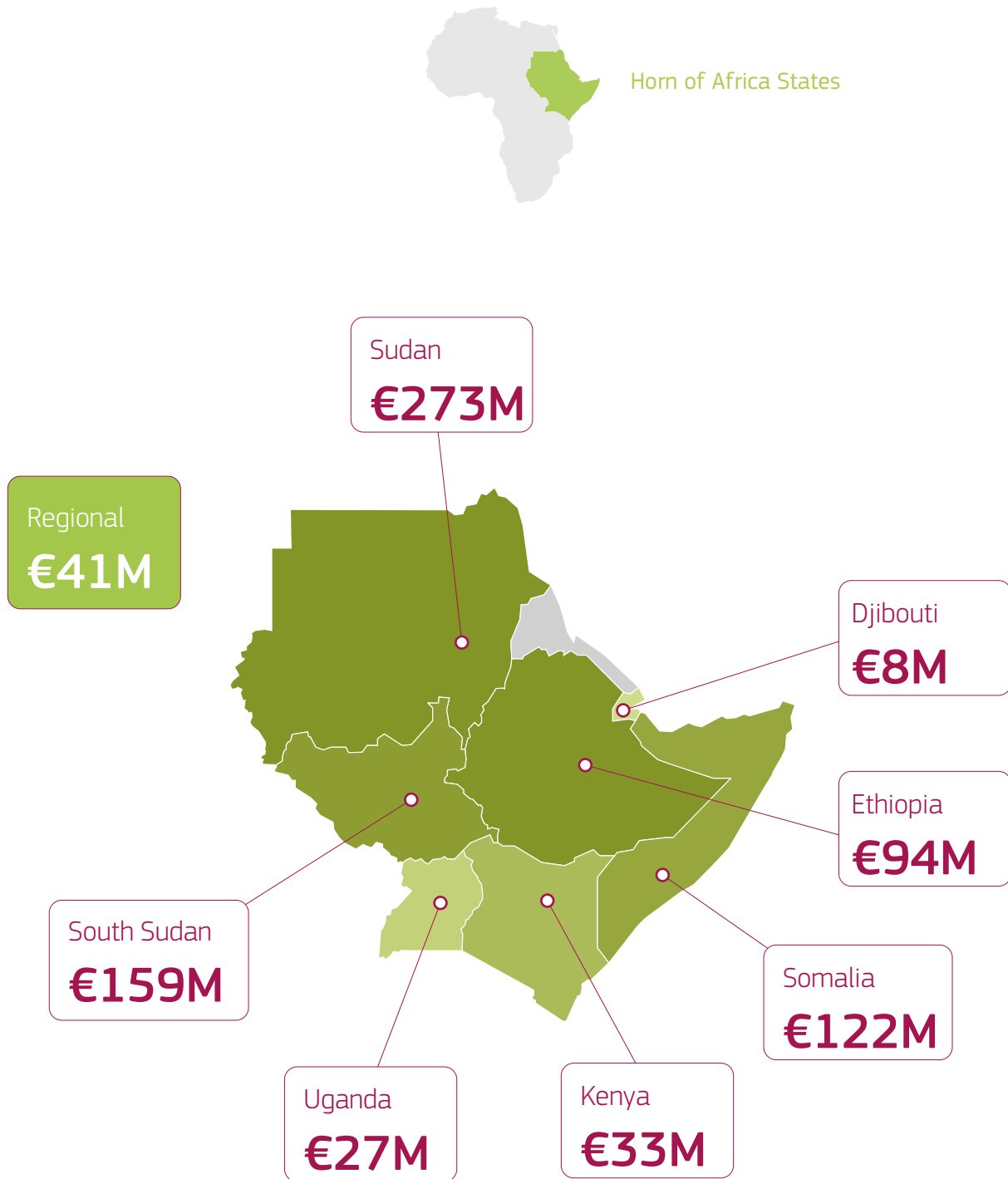
Cumulative EUTF S02 outputs





S02: Strengthening the resilience of communities and in particular the most vulnerable including refugees and other displaced people

S02 funding by country



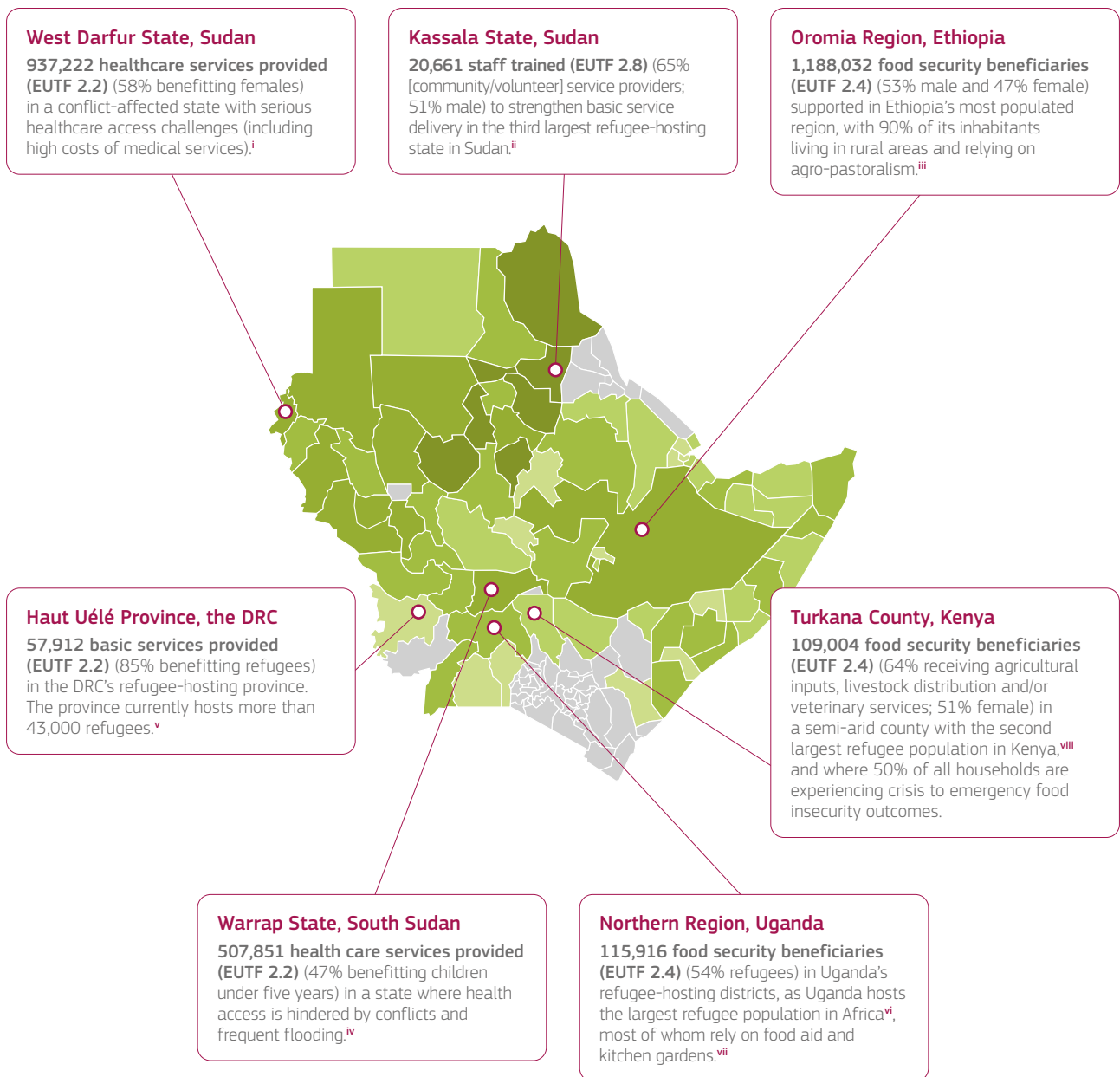


S02: Strengthening the resilience of communities and in particular the most vulnerable including refugees and other displaced people

Implementation areas and key S02 outputs as of December 2022



Horn of Africa States



Number of S02 priority projects per region²

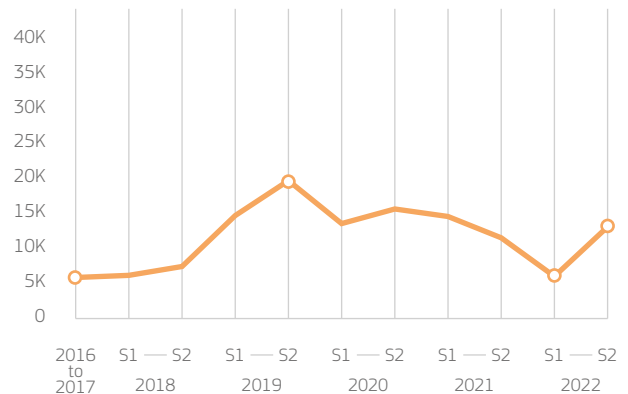
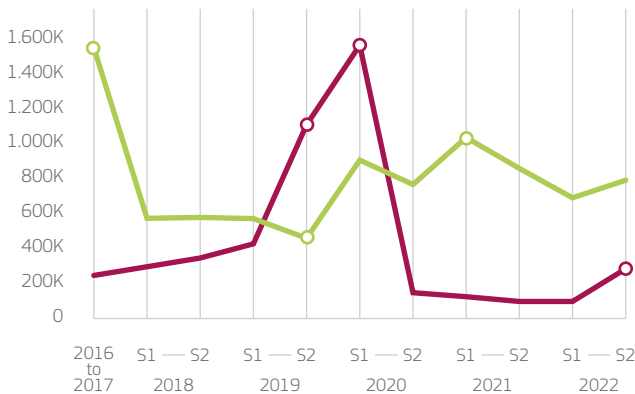




SO2: Strengthening the resilience of communities and in particular the most vulnerable including refugees and other displaced people

Key SO2 outputs

Non-cumulative EUTF SO2 outputs






Basic social services delivered 2.2



Food security beneficiaries 2.4



Staff Trained 2.8

		
<p>Large early output: 18% of all basic services were delivered in 2016-2017</p> <p>HPF II (South Sudan) provided medical treatments and consultations to 1,409,013 people (47% of whom were children under five years) in South Sudan between 2016 and 2017.</p> <p>Lowest semesterly output reported in S2 2019 (452, 514)</p> <p>HPF II comes to an end in S2 2018, while other contributing projects under the RDPP ET (Ethiopia) and Resilience Darfur SD (Sudan) programmes slow down their provision of basic services before ending in 2020.</p> <p>Continued increase from S1 2020 (897,764) to S1 2021 (1,027,736)</p> <p>In 2020, HPF III and Education in Emergency programmes (South Sudan) begin implementation and deliver 61% of the total services delivered in HoA. Other significant contributors such as the BRICK programme (Sudan) begin implementation in S1 2021.</p>	<p>Steady increase through S2 2019 (1,099,669) and largest biannual output reported in S1 2020 (1,552,164)</p> <p>Cross-Border El Niño SS FAO (South Sudan) and RESET II DCA (Ethiopia) carry out massive livestock vaccination and treatment activities, accounting for 66% of the output reported prior to S2 2020.</p> <p>Drop from S2 2020 (147,227) onwards</p> <p>The main contributors to food security-related activities – El Niño SS FAO (South Sudan) and the RESET II programme (Ethiopia) – came to an end between S2 2020 and S1 2021.</p> <p>Increase in S2 2022 (279,225)</p> <p>STARS MDTF in Sudan reports one of the largest biannual food distribution outputs in two years.</p>	<p>Steady increase from 2016-2017 (5,854) to S2 2019 (19,694)</p> <p>Several programmes across the region such as RESET II and RDPP ET (Ethiopia), EQUIP and Nutrition Eastern Sudan (Sudan) train staff from 2016 to S2 2019 to strengthen service delivery. The four programmes account for 65% of the total staff trained in HoA up to S2 2019.</p> <p>Lowest semesterly output reported in S1 2022 (6,001)</p> <p>Significant contributors such as the EQUIP and Resilience East SD (Sudan), Education in Emergency (South Sudan) and RDPP ET (Ethiopia) programmes, which collectively reached 19% of all staff trained to date, ended between S2 2021 and S1 2022.</p> <p>Increase from S1 2022 (6,001) to S2 2022 (12,948)</p> <p>Improving Nutrition WFP (Sudan) and CRRF KE Self Reliance (Kenya) scale up capacity building activities and report their largest semesterly outputs to date (collectively accounting for 48% of S2 2022 output).</p>



SO2: Strengthening the resilience of communities and in particular the most vulnerable including refugees and other displaced people

Abbreviations and acronyms

EQUIP	Education Quality Improvement Programme
BRICK	Building resilient communities in West Kordofan
CRRF	Comprehensive Refugee Response Framework
DCA	DanChurchAid
The DRC	The Democratic Republic of Congo
Education in Emergency	Education in Emergency Programme in Four Former States in South Sudan
El Nino SS	Strengthening the Livelihoods Resilience of Pastoral and Agro-Pastoral Communities in South Sudan's cross-border areas with Sudan, Ethiopia, Kenya and Uganda
ET	Ethiopia
EUTF	European Union Emergency Trust Fund for Africa
FAO	Food and Agriculture Organization of the United Nations
HoA	Horn of Africa
HPF	Health Pooled Fund
KE	Kenya
M	Million
Nutrition Eastern Sudan	Improving Nutrition and Reducing Stunting in Eastern Sudan
NGO	Non-governmental organisation
RDPP	Regional Development and Protection Programme
RESET	Resilience Building and Creation of Economic Opportunities in Ethiopia
Resilience Darfur	Strengthening Resilience for IDPs, Returnees and Host Communities in Kulbus and Jebel Moon West Darfur
Resilience East	Strengthening resilience of refugees, IDPs and host communities in Eastern Sudan
SO	Strategic Objective
SS	South Sudan
SD	Sudan
STARS MDTF	Sudan Transition and Recovery Support Multi-Donor Trust Fund
WFP	World Food Programme

Footnotes

1. Projects with SO2 priority have a larger budget allocation to SO2 than to any other Strategic Objective, per the MLS portfolio analysis.
2. The colours on the map represent the number of SO2 priority projects in each region. However, the key outputs selected highlight notable results achieved by EUTF projects, and do not always correlate with the number of projects present in a given area.

Sources

- i. Doctors Without Borders, 'El Geneina Teaching Hospital, West Darfur: 5 key points on the recent violence and humanitarian needs', 12 May 2023 at <https://msf.or.ke/en/magazine/el-geneina-teaching-hospital-west-darfur-5-key-points-recent-violence-and-humanitarian#:~:text=Even%20prior%20to%20the%20outbreak,high%20prices%20for%20medical%20services>
- ii. UNOCHA, 'OCHA Sudan: Kassala State Profile (March 2023)', 29 March 2023 at <https://reliefweb.int/report/sudan/ocha-sudan-kassala-state-profile-march-2023#:~:text=HUMANITARIAN%20OVERVIEW&text=Kassala%20hosts%20the%20third%20largest,Ethiopia%20and%20Eritrea%20to%20Europe>.
- iii. ILO, 'Approach to inclusive market systems assessment in Ethiopia: Oromia, Southern Nations, Nationalities and Peoples, and Addis Ababa', 2022 at https://www.ilo.org/wcmsp5/groups/public/---africa/---ro-abidjan/---sro-addis_ababa/documents/publication/wcms_867973.pdf
- iv. FEWSNET, 'Severe flooding, conflict, and macroeconomic crisis drive Emergency (IPC Phase 4) and high assistance needs', September 2020 at <https://fewsn.net/east-africa/south-sudan/key-message-update/september-2020>
- v. UNHCR, 'Democratic Republic of the Congo: Monthly Statistics of Refugees and Asylum Seekers (as of 30 April 2023)', 9 May 2023 at <https://reliefweb.int/report/democratic-republic-congo/democratic-republic-congo-monthly-statistics-refugees-and-asylum-seekers-30-april-2023>
- vi. UNHCR, 'Country operations – Uganda', 2023 at <https://reporting.unhcr.org/operational/operations/uganda>
- vii. Reuters, 'Aid shortage leaves refugees in Uganda reliant on kitchen gardens', 11 April 2023 at <https://www.reuters.com/world/africa/aid-shortage-leaves-refugees-uganda-reliant-kitchen-gardens-2023-04-06/>
- viii. UN-Habitat, 'Research briefing: Socio-economic development in Turkana West, Kenya', April 2022 at https://unhabitat.org/sites/default/files/2022/06/research_brief_volume_1_june_2022.pdf



European Commission

The EU Emergency Trust Fund for Africa

Address: Rue de la Loi 41, B-1049 Brussels

Phone: +32 (0) 2 299 11 11

E-mail: intpa-eutf-africa@ec.europa.eu

Website: <https://trust-fund-for-africa.europa.eu/>



**Funded by
the European Union**

Funding and non-responsibility disclaimer:

This material was produced with the financial support of the European Union through the European Emergency Trust Fund for Africa. Its contents are the sole responsibility of Altai Consulting and do not necessarily reflect the views of the European Union.

Copyright notice:

© European Union, 2023

Graphic design: Pomilio Blumm srl

Cover photo: © Istock photo

Licensed to the European Union under conditions